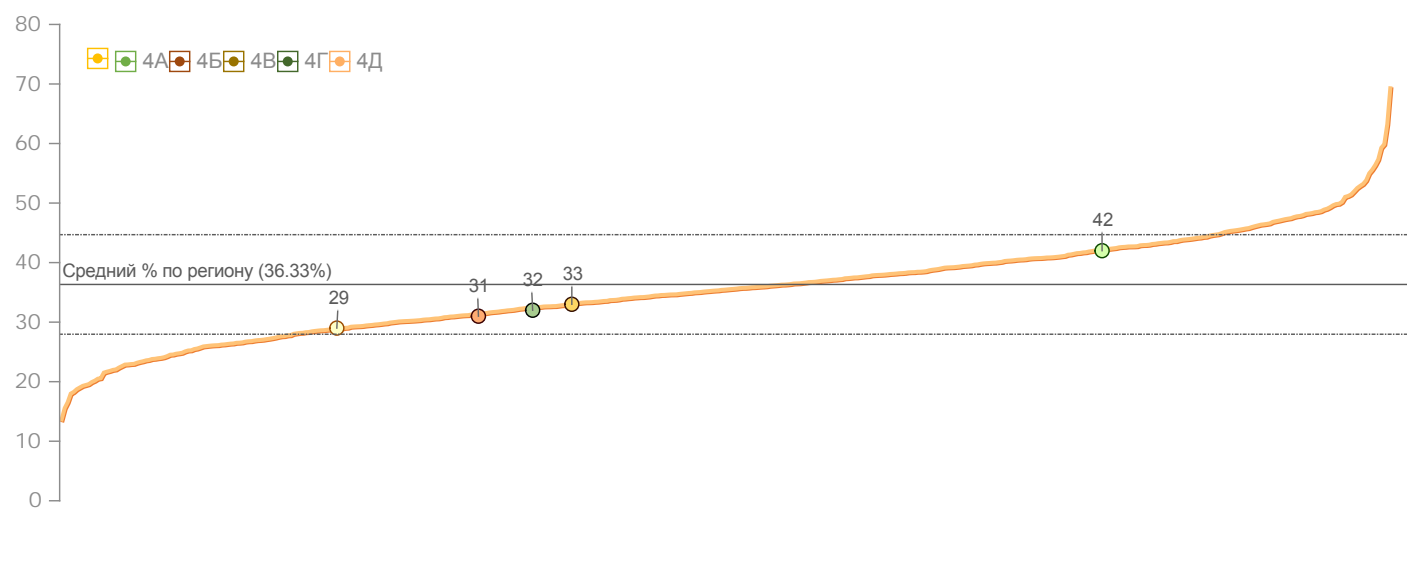
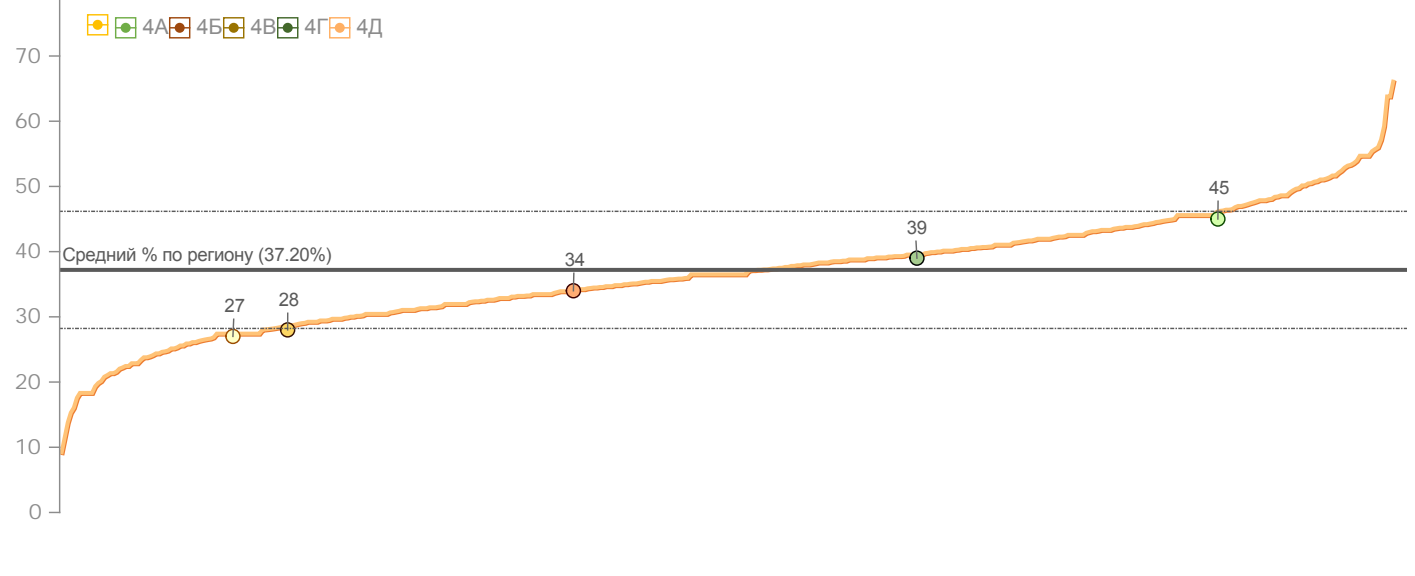
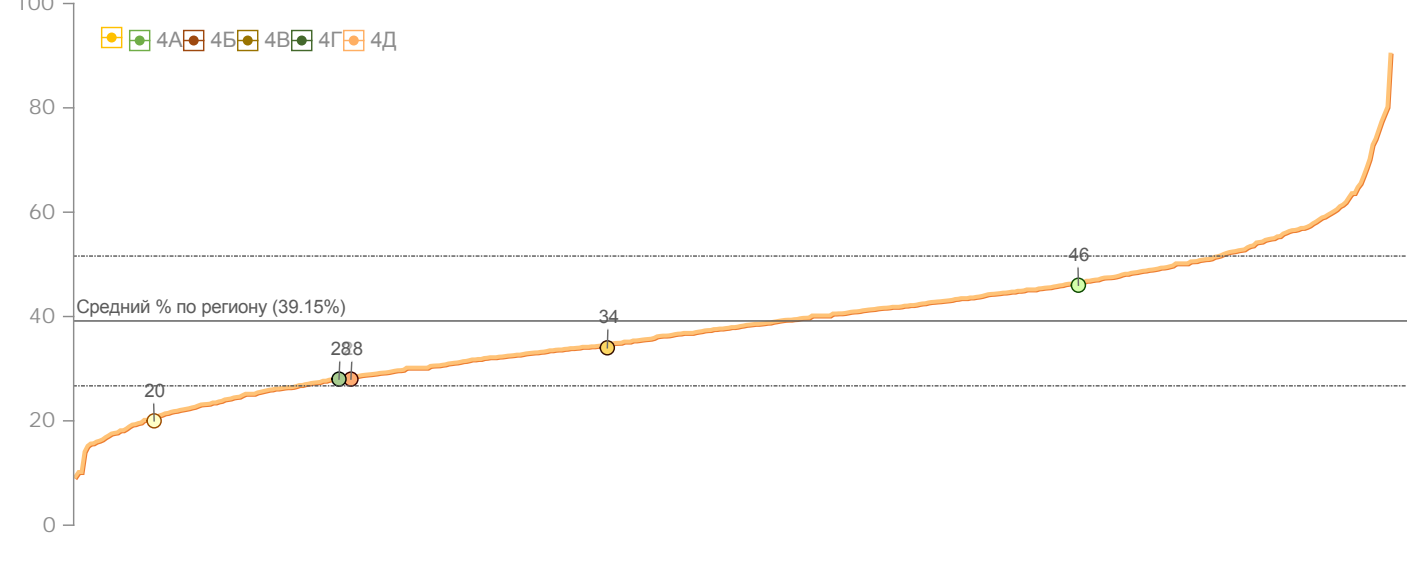
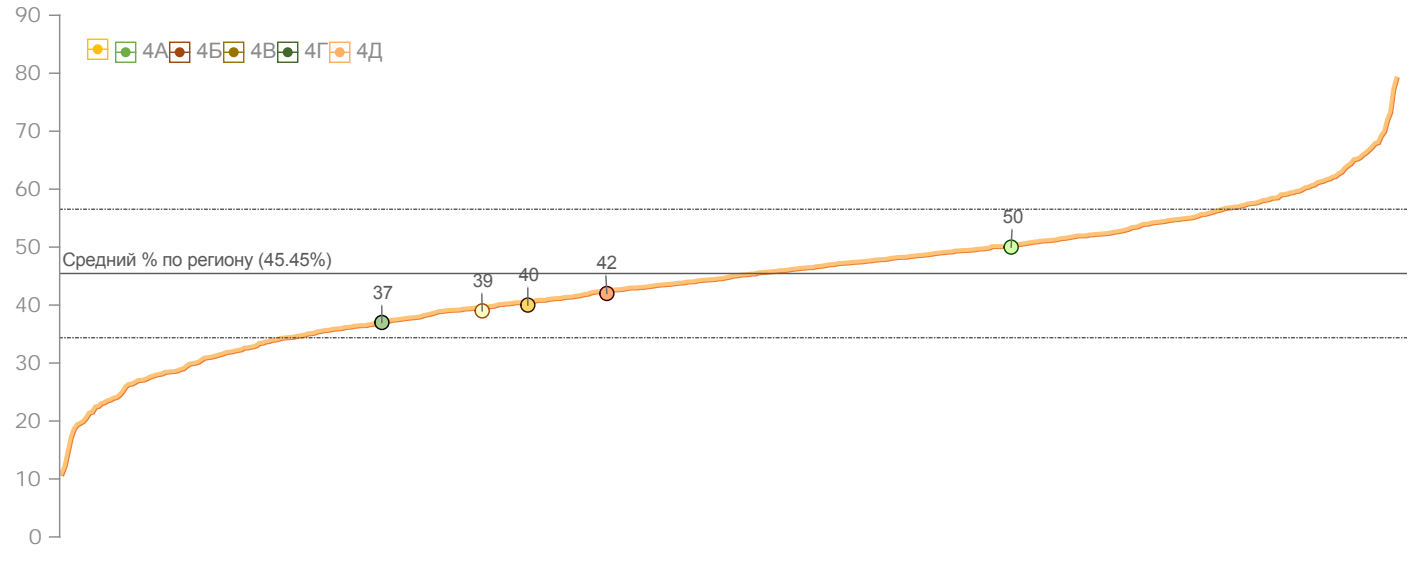
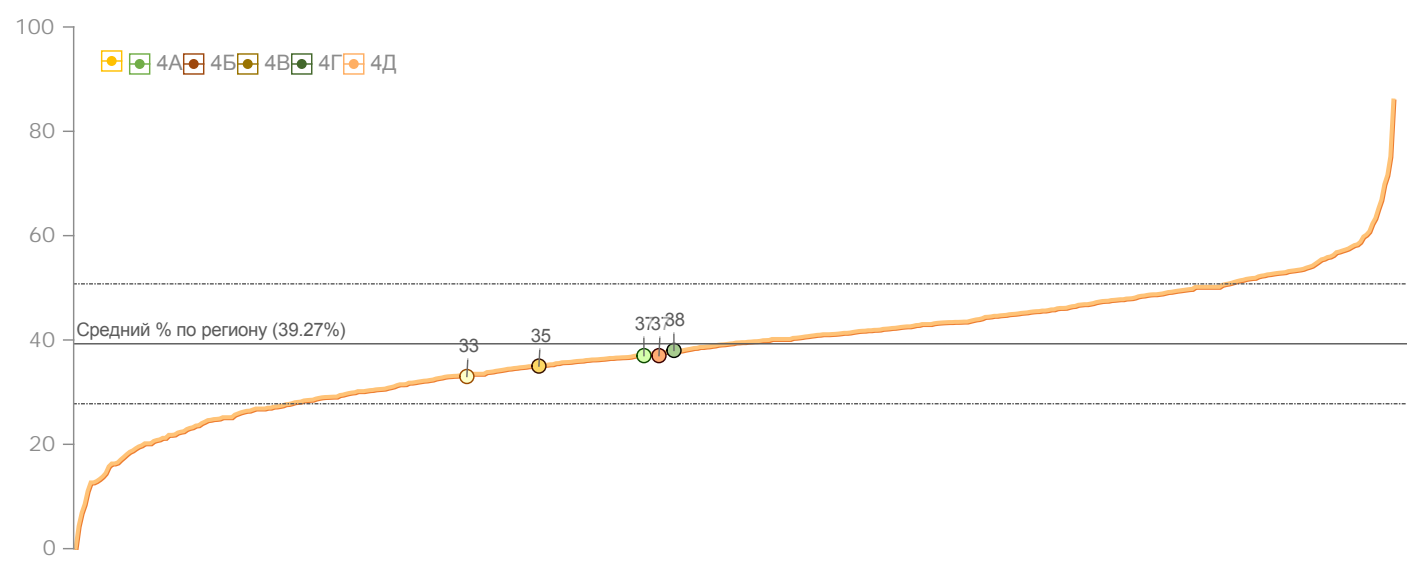
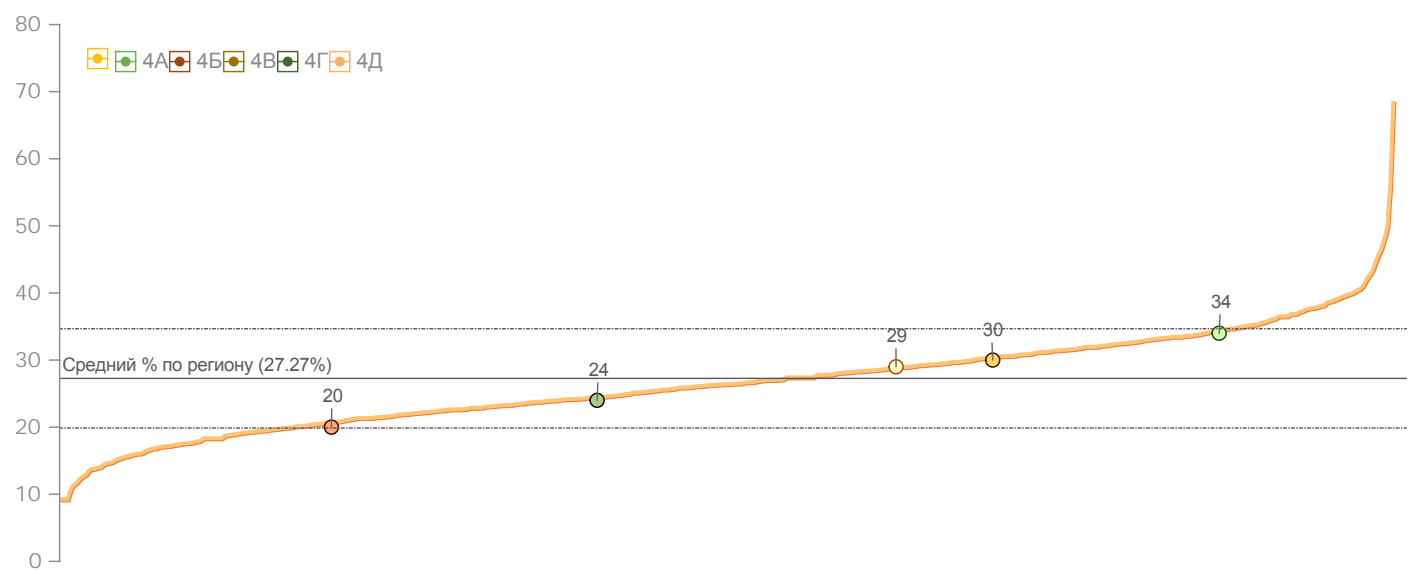
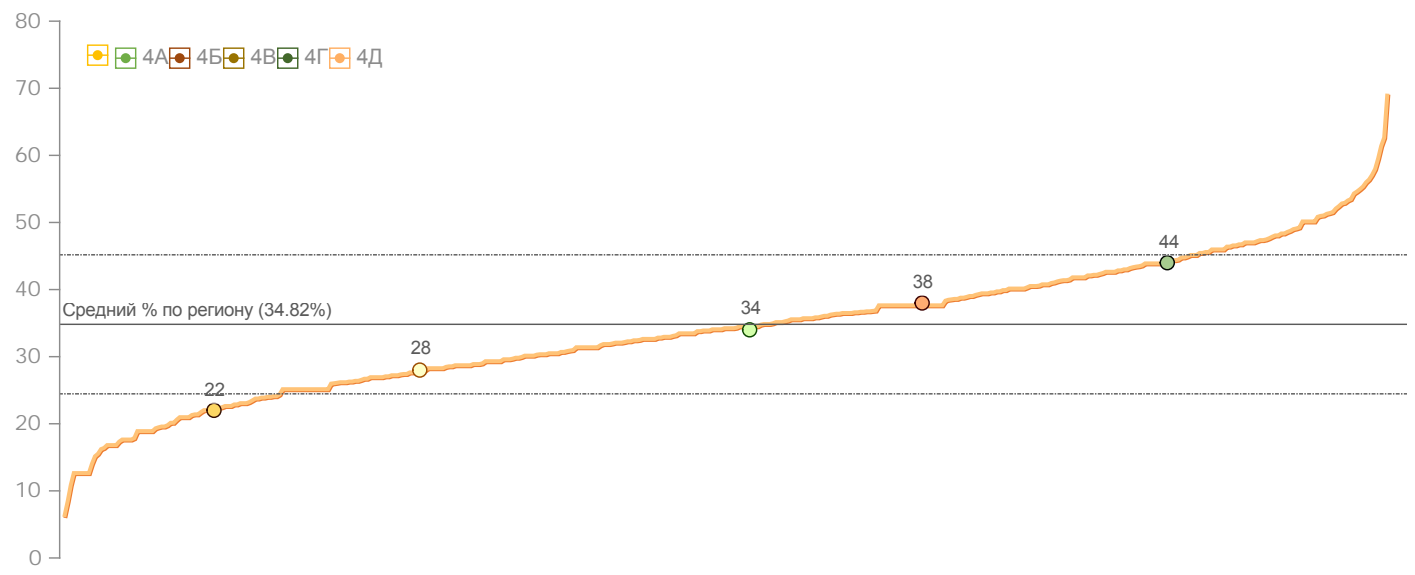


1.

	%	%						
4	41.73	34	45	37	46	50	34	91.3
4	31.12	38	34	37	28	42	20	62.5
4	32.69	22	28	35	34	40	30	78.9
4	32.20	44	39	38	28	37	24	60.0
4	28.65	28	27	33	20	39	29	76.2
	33.66	32	34	36	32	43	28	75.5
	36.33	35	37	39	39	45	27	81.5

1.2.



2.

4

	%	%						
1	59.52	-	-	-	-	-	60	
3	47.50	-	-	-	48	-	-	
4	65.00	-	-	-	-	-	-	
6	34.88	-	-	-	35	-	-	
7	47.50	-	-	-	-	-	48	
9	50.00	-	-	-	-	-	50	
10	7.50	-	-	-	8	-	-	
11	46.34	-	-	46	-	-	-	
12	21.95	-	-	22	-	-	-	
13	27.50	-	-	-	28	-	-	
14	33.33	-	-	-	-	-	33	
15	61.90	-	-	-	-	-	62	
16	53.49	-	-	-	53	-	-	
17	51.22	-	-	51	-	-	-	
18	50.00	-	-	-	-	-	50	
19	21.95	-	-	22	-	-	-	
20	28.57	-	-	-	-	-	29	
21	16.67	-	-	-	-	17	-	
22	48.84	-	-	-	49	-	-	
23	52.50	-	-	-	53	-	-	
24	56.10	-	-	56	-	-	-	
25	35.00	-	-	-	35	-	-	
26	41.86	-	-	-	42	-	-	
	41.66	-	-	40	39	17	47	

4

	%	%						
2	16.28	-	-	-	16	-	-	
3	13.95	-	-	-	14	-	-	
5	28.57	-	-	-	-	-	29	
6	20.00	-	-	-	-	-	20	
7	15.00	-	-	-	15	-	-	
8	32.50	-	-	-	-	-	33	
9	19.51	-	-	20	-	-	-	
10	38.10	-	-	-	-	38	-	
12	32.50	-	-	-	-	-	-	
13	6.98	-	-	-	7	-	-	
15	57.14	-	-	-	-	-	57	
17	25.00	-	-	-	25	-	-	
20	37.50	-	-	-	38	-	-	
21	60.47	-	-	-	60	-	-	
24	45.00	-	-	-	-	-	45	
26	48.84	-	-	-	49	-	-	
	31.17	-	-	20	28	38	37	

4

	%	%						
1	16.28	-	-	-	16	-	-	
2	17.50	18	-	-	-	-	-	
3	33.33	-	-	-	-	-	33	
4	61.90	-	-	-	-	62	-	
5	27.50	28	-	-	-	-	-	
6	25.00	25	-	-	-	-	-	
7	37.50	38	-	-	-	-	-	
8	15.00	15	-	-	-	-	-	
10	27.50	28	-	-	-	-	-	
11	35.00	-	-	-	-	-	-	

12	32.50	-	-	-	33	-	-	
13	47.62	-	-	-	-	-	48	
14	52.38	-	-	-	-	-	52	
15	19.05	-	-	-	-	-	19	
16	39.53	-	-	-	40	-	-	
17	23.81	-	-	-	-	-	24	
19	48.78	-	-	49	-	-	-	
20	33.33	-	-	-	-	-	33	
21	26.19	-	-	-	-	-	26	
	33.05	25	-	49	29	62	34	

4

	%	%						
1	17.50	-	-	-	-	-	18	
2	14.63	-	-	15	-	-	-	
3	14.29	-	-	-	-	14	-	
4	50.00	-	-	-	50	-	-	
5	54.76	-	-	-	-	55	-	
6	31.71	-	-	32	-	-	-	
9	33.33	-	-	-	-	33	-	
10	19.05	-	-	-	-	19	-	
12	40.00	40	-	-	-	-	-	
15	17.50	18	-	-	-	-	-	
16	46.34	-	-	46	-	-	-	
18	43.90	-	-	44	-	-	-	
20	40.00	-	-	-	-	-	-	
21	9.30	-	-	-	9	-	-	
22	52.50	-	-	-	-	-	53	
	32.16	29	-	34	29	30	35	

4

	%	%						
1	34.88	-	-	-	35	-	-	
2	30.00	-	-	-	-	-	30	
3	25.00	25	-	-	-	-	-	
4	37.50	-	-	-	-	-	-	
5	33.33	-	-	-	-	-	33	
6	28.57	-	-	-	-	-	29	
7	22.50	-	-	-	-	-	23	
8	22.50	-	-	-	23	-	-	
9	40.48	-	-	-	-	-	40	
10	17.07	-	-	17	-	-	-	
13	7.14	-	-	-	-	-	7	
14	15.00	-	-	-	-	-	15	
15	22.50	-	-	-	-	-	23	
16	23.26	-	-	-	23	-	-	
17	59.52	-	-	-	-	60	-	
18	22.50	-	-	-	23	-	-	
19	59.52	-	-	-	-	60	-	
21	15.00	15	-	-	-	-	-	
23	32.50	-	-	-	-	-	33	
24	14.29	-	-	-	-	-	14	
25	36.59	-	-	37	-	-	-	
	28.92	20	-	27	26	60	25	

3.1.

: 4

1

		( )		( )	( )	( )
1.						
. 4						
1	1		1	60.00	45.00	55.66
2	2		2	0.00	26.25	42.19
3	3		2	40.00	28.75	31.94
. 4						
4	1	( , )	1	40.00	25.00	34.14
5	2	2 ,	2	50.00	28.75	32.03
6	3	( ), ( )	2	40.00	31.25	33.99
2.						
. 4						
7	1		1	80.00	31.25	40.98
8	2		2	60.00	39.06	41.37
9	3		2	20.00	31.25	29.60
10	4		1	100.00	100.00	94.99
11	5		1	20.00	6.25	17.64
. 4						
12	1		1	80.00	43.75	60.08
13	2		2	60.00	64.06	65.02
14	3		2	30.00	34.38	46.45

15	4		1	20.00	9.38	16.24
3.						
. 4						
16	1		1	0.00	28.26	36.91
17	2		1	60.00	76.09	67.51
18	3		2	10.00	8.70	13.19
19	4		2	20.00	11.96	15.96
20	5		1	60.00	60.87	51.47
21	6	) ( -	1	40.00	28.26	27.17
22	7		1	40.00	47.83	37.32
23	8	/	2	50.00	40.22	38.36
4.						
. 4						
24	1		2	70.00	54.55	63.69
25	2		1	80.00	81.82	78.25
26	3		2	20.00	38.64	47.17
27	4		2	0.00	18.18	22.23

: 4

2

		( )		( )	( )	( )
1.						
. 4						
1	1		1	100.00	28.26	36.91
2	2		1	100.00	76.09	67.51
3	3		2	50.00	8.70	13.19
4	4		2	100.00	11.96	15.96



5	5		1	100.00	60.87	51.47
6	6	) ( -	1	100.00	28.26	27.17
7	7		1	0.00	47.83	37.32
8	8	/	2	100.00	40.22	38.36
2.						
. 4						
9	1		1	100.00	52.94	35.37
10	2		1	100.00	52.94	36.73
11	3		2	50.00	47.06	49.60
12	4	:	2	50.00	26.47	29.76
13	5		2	50.00	50.00	40.38
3.						
. 4						
14	1	( , )	1	100.00	25.00	34.14
15	2	2 ,	2	0.00	28.75	32.03
16	3	( ), ( )	2	0.00	31.25	33.99
. 4						
17	1		1	100.00	45.00	55.66
18	2	, ,	2	100.00	26.25	42.19
19	3		2	100.00	28.75	31.94
4.						
. 4 ?						
20	1		2	100.00	20.00	24.89
21	2		1	100.00	80.00	74.56
22	3		2	0.00	0.00	24.23
23	4	,	1	100.00	33.33	48.19

. 4 .						
24	1		1	100.00	86.67	66.45
25	2		1	100.00	40.00	47.80
26	3		2	0.00	16.67	15.98
27	4		1	0.00	33.33	25.54

: 4

3

		( )		( )	( )	( )
1.						
. 4 .						
1	1		2	40.00	35.19	41.85
2	2	2	2	70.00	54.63	68.05
3	3		1	100.00	37.04	41.70
. 4 .						
4	1		1	100.00	40.74	53.57
5	2		2	30.00	7.41	12.51
6	3		2	40.00	31.48	36.43
2.						
. 4 .						
7	1		1	20.00	31.25	40.98
8	2		2	50.00	39.06	41.37
9	3		2	40.00	31.25	29.60
10	4		1	100.00	100.00	94.99
11	5		1	20.00	6.25	17.64
. 4 .						
12	1		1	80.00	43.75	60.08

13	2		2	60.00	64.06	65.02
14	3		2	40.00	34.38	46.45
15	4		1	20.00	9.38	16.24
3.						
. 4						
16	1	« »	2	50.00	45.45	44.13
17	2	« »	4	40.00	28.03	26.03
18	3	« »	2	20.00	24.24	24.69
4.						
. 4						
19	1		1	20.00	28.26	36.91
20	2		1	80.00	76.09	67.51
21	3		2	0.00	8.70	13.19
22	4		2	0.00	11.96	15.96
23	5		1	80.00	60.87	51.47
24	6	) ( -	1	60.00	28.26	27.17
25	7		1	80.00	47.83	37.32
26	8	/	2	80.00	40.22	38.36

: 4

4

		( )		( )	( )	( )
4.						
. 4						
1	1		2	50.00	54.55	63.69
2	2		1	100.00	81.82	78.25
3	3		2	50.00	38.64	47.17
4	4		2	0.00	18.18	22.23

2.						
. 4						
5	1		1	0.00	28.26	36.91
6	2		1	100.00	76.09	67.51
7	3		2	0.00	8.70	13.19
8	4		2	0.00	11.96	15.96
9	5		1	0.00	60.87	51.47
10	6	) ( -	1	100.00	28.26	27.17
11	7		1	0.00	47.83	37.32
12	8	/	2	0.00	40.22	38.36
3.						
. 4						
13	1	,	2	0.00	35.19	41.85
14	2	2	2	50.00	54.63	68.05
15	3	,	1	0.00	37.04	41.70
. 4						
16	1	,	1	0.00	40.74	53.57
17	2		2	0.00	7.41	12.51
18	3		2	0.00	31.48	36.43
4.						
. 4						
19	1	,	1	0.00	4.35	17.07
20	2	,	2	0.00	47.83	53.85
21	3	,	2	0.00	47.83	33.79
22	4	,	1	0.00	52.17	43.85

23	5		2	0.00	52.17	57.80
. 4						
24	1		1	0.00	21.74	29.77
25	2		1	0.00	21.74	36.67
26	3		2	50.00	60.87	53.45
27	4		2	0.00	56.52	53.75

: 4

6

		( )		( )	( )	( )
1.						
, 4						
1	1		1	20.00	35.42	45.08
2	2		2	40.00	25.00	19.39
3	3	( )	1	0.00	12.50	9.59
4	4		2	30.00	36.46	30.11
5	5		1	40.00	35.42	37.16
6	6		2	0.00	9.38	15.36
7	7		2	40.00	16.67	11.61
2.						
. 4						
8	1		1	60.00	25.00	38.46
9	2		1	80.00	83.33	73.06
10	3		1	40.00	41.67	28.25
11	4		2	10.00	6.25	10.57
. 4 ?						

12	1		2	30.00	33.33	33.85
13	2		2	40.00	35.42	41.62
14	3		1	60.00	50.00	52.13
15	4		1	60.00	45.83	61.65
3.						
. 4						
16	1		1	80.00	63.64	56.92
17	2	:	2	0.00	4.55	20.45
18	3		2	30.00	29.55	38.05
19	4	:	1	40.00	31.82	37.32
20	5		2	0.00	9.09	17.25
4.						
. 4						
21	1	( , )	1	20.00	25.00	34.14
22	2	2 ,	2	40.00	28.75	32.03
23	3	( ), ( )	2	40.00	31.25	33.99
. 4						
24	1		1	40.00	45.00	55.66
25	2	, ,	2	60.00	26.25	42.19
26	3		2	50.00	28.75	31.94

: 4

7

		( )		( )	( )	( )
1.						
. 4						
1	1		1	100.00	52.94	35.37

2	2		1	50.00	52.94	36.73
3	3		2	50.00	47.06	49.60
4	4	:	2	25.00	26.47	29.76
5	5		2	50.00	50.00	40.38
2.						
. 4						
6	1	,	2	75.00	35.19	41.85
7	2	2	2	75.00	54.63	68.05
8	3	,	1	100.00	37.04	41.70
. 4						
9	1	,	1	100.00	40.74	53.57
10	2		2	25.00	7.41	12.51
11	3		2	0.00	31.48	36.43
3.						
. 4						
12	1		1	0.00	25.00	38.46
13	2		1	100.00	83.33	73.06
14	3	,	1	50.00	41.67	28.25
15	4		2	0.00	6.25	10.57
. 4 ?						
16	1	,	2	50.00	33.33	33.85
17	2		2	50.00	35.42	41.62
18	3		1	100.00	50.00	52.13
19	4	,	1	100.00	45.83	61.65
4.						
, 4						
20	1		1	50.00	35.42	45.08

21	2		2	100.00	25.00	19.39
22	3	( ' . ). ,	1	0.00	12.50	9.59
23	4		2	50.00	36.46	30.11
24	5		1	50.00	35.42	37.16
25	6		2	0.00	9.38	15.36
26	7		2	25.00	16.67	11.61

: 4

8

		( )		( )	( )	( )
1.						
. 4						
1	1	'	1	0.00	4.35	17.07
2	2	' ,	2	62.50	47.83	53.85
3	3	'	2	75.00	47.83	33.79
4	4	'	1	100.00	52.17	43.85
5	5	'	2	62.50	52.17	57.80
. 4						
6	1	'	1	50.00	21.74	29.77
7	2	'	1	50.00	21.74	36.67
8	3	'	2	87.50	60.87	53.45
9	4	'	2	62.50	56.52	53.75
2.						
, 4						
10	1	'	1	0.00	35.42	45.08
11	2	'	2	25.00	25.00	19.39



12	3	( ' . ). ,	1	0.00	12.50	9.59
13	4		2	25.00	36.46	30.11
14	5		1	25.00	35.42	37.16
15	6		2	25.00	9.38	15.36
16	7		2	37.50	16.67	11.61
3.						
. 4						
17	1	« »	2	50.00	45.45	44.13
18	2	« ' »	4	25.00	28.03	26.03
19	3	« ' »	2	37.50	24.24	24.69
4.						
. 4						
20	1	, ' ,	2	75.00	35.19	41.85
21	2	' 2	2	50.00	54.63	68.05
22	3	, ' ,	1	75.00	37.04	41.70
. 4						
23	1	'	1	75.00	40.74	53.57
24	2		2	12.50	7.41	12.51
25	3		2	37.50	31.48	36.43

: 4

1

		( )		( )	( )	( )
1.						
. 4						
1	1		1	0.00	45.00	55.66

2	2		2	0.00	26.25	42.19
3	3		2	0.00	28.75	31.94
. 4						
4	1	(	1	0.00	25.00	34.14
5	2	2	2	0.00	28.75	32.03
6	3	( ), ( )	2	100.00	31.25	33.99
2.						
. 4						
7	1		1	0.00	31.25	40.98
8	2		2	0.00	39.06	41.37
9	3		2	0.00	31.25	29.60
10	4		1	100.00	100.00	94.99
11	5		1	0.00	6.25	17.64
. 4						
12	1		1	0.00	43.75	60.08
13	2		2	50.00	64.06	65.02
14	3		2	50.00	34.38	46.45
15	4		1	0.00	9.38	16.24
3.						
. 4						
16	1		1	0.00	28.26	36.91
17	2		1	0.00	76.09	67.51
18	3		2	0.00	8.70	13.19
19	4		2	0.00	11.96	15.96
20	5		1	0.00	60.87	51.47
21	6	) ( -	1	0.00	28.26	27.17
22	7		1	0.00	47.83	37.32

23	8	/	2	0.00	40.22	38.36
4.						
. 4						
24	1		2	50.00	54.55	63.69
25	2		1	100.00	81.82	78.25
26	3		2	50.00	38.64	47.17
27	4		2	0.00	18.18	22.23

: 4

2

		( )		( )	( )	( )
1.						
. 4						
1	1		1	100.00	28.26	36.91
2	2	,	1	100.00	76.09	67.51
3	3		2	0.00	8.70	13.19
4	4	,	2	0.00	11.96	15.96
5	5		1	100.00	60.87	51.47
6	6	) ( -	1	0.00	28.26	27.17
7	7		1	0.00	47.83	37.32
8	8	/	2	50.00	40.22	38.36
2.						
. 4						
9	1		1	0.00	52.94	35.37
10	2		1	100.00	52.94	36.73
11	3		2	50.00	47.06	49.60
12	4	:	2	50.00	26.47	29.76
13	5		2	50.00	50.00	40.38

3.						
. 4						
14	1	( , )	1	100.00	25.00	34.14
15	2	2 ,	2	50.00	28.75	32.03
16	3	( ), ( )	2	0.00	31.25	33.99
. 4						
17	1		1	0.00	45.00	55.66
18	2	, ,	2	0.00	26.25	42.19
19	3		2	0.00	28.75	31.94
4.						
. 4 ?						
20	1		2	0.00	20.00	24.89
21	2		1	100.00	80.00	74.56
22	3		2	0.00	0.00	24.23
23	4	,	1	0.00	33.33	48.19
. 4						
24	1	,	1	100.00	86.67	66.45
25	2		1	0.00	40.00	47.80
26	3		2	0.00	16.67	15.98
27	4	,	1	100.00	33.33	25.54

: 4

3

		( )		( )	( )	( )
1.						
. 4						

1	1		2	100.00	35.19	41.85
2	2	2	2	50.00	54.63	68.05
3	3		1	0.00	37.04	41.70
. 4						
4	1		1	50.00	40.74	53.57
5	2		2	0.00	7.41	12.51
6	3		2	25.00	31.48	36.43
2.						
. 4						
7	1		1	50.00	31.25	40.98
8	2		2	100.00	39.06	41.37
9	3		2	50.00	31.25	29.60
10	4		1	100.00	100.00	94.99
11	5		1	0.00	6.25	17.64
. 4						
12	1		1	0.00	43.75	60.08
13	2		2	75.00	64.06	65.02
14	3		2	50.00	34.38	46.45
15	4		1	50.00	9.38	16.24
3.						
. 4						
16	1	« »	2	75.00	45.45	44.13
17	2	« »	4	50.00	28.03	26.03
18	3	« »	2	25.00	24.24	24.69
4.						
. 4						
19	1		1	50.00	28.26	36.91

20	2		1	50.00	76.09	67.51
21	3		2	0.00	8.70	13.19
22	4		2	0.00	11.96	15.96
23	5		1	50.00	60.87	51.47
24	6	) ( -	1	0.00	28.26	27.17
25	7		1	50.00	47.83	37.32
26	8	/	2	25.00	40.22	38.36

: 4

4

		( )		( )	( )	( )
4.						
. 4						
1	1		2	100.00	54.55	63.69
2	2		1	100.00	81.82	78.25
3	3		2	50.00	38.64	47.17
4	4		2	0.00	18.18	22.23
2.						
. 4						
5	1		1	0.00	28.26	36.91
6	2		1	100.00	76.09	67.51
7	3		2	0.00	8.70	13.19
8	4		2	0.00	11.96	15.96
9	5		1	100.00	60.87	51.47
10	6	) ( -	1	0.00	28.26	27.17
11	7		1	0.00	47.83	37.32
12	8	/	2	0.00	40.22	38.36

3.						
. 4						
13	1		2	0.00	35.19	41.85
14	2	2	2	50.00	54.63	68.05
15	3		1	0.00	37.04	41.70
. 4						
16	1		1	100.00	40.74	53.57
17	2		2	0.00	7.41	12.51
18	3		2	0.00	31.48	36.43
4.						
. 4						
19	1		1	0.00	4.35	17.07
20	2		2	50.00	47.83	53.85
21	3		2	50.00	47.83	33.79
22	4		1	0.00	52.17	43.85
23	5		2	50.00	52.17	57.80
. 4						
24	1		1	0.00	21.74	29.77
25	2		1	100.00	21.74	36.67
26	3		2	100.00	60.87	53.45
27	4		2	100.00	56.52	53.75

: 4

6

		( )		( )	( )	( )
--	--	-----	--	-----	-----	-----

1.						
, 4						
1	1		1	33.33	35.42	45.08
2	2		2	0.00	25.00	19.39
3	3	( ' , ).	1	0.00	12.50	9.59
4	4		2	50.00	36.46	30.11
5	5		1	33.33	35.42	37.16
6	6		2	16.67	9.38	15.36
7	7		2	0.00	16.67	11.61
2.						
. 4						
8	1		1	0.00	25.00	38.46
9	2		1	66.67	83.33	73.06
10	3		1	100.00	41.67	28.25
11	4		2	33.33	6.25	10.57
. 4 ?						
12	1		2	0.00	33.33	33.85
13	2		2	33.33	35.42	41.62
14	3		1	33.33	50.00	52.13
15	4		1	33.33	45.83	61.65
3.						
. 4						
16	1		1	66.67	63.64	56.92
17	2	:	2	16.67	4.55	20.45
18	3		2	16.67	29.55	38.05
19	4	:	1	66.67	31.82	37.32
20	5		2	16.67	9.09	17.25



4.						
. 4						
21	1	( , )	1	33.33	25.00	34.14
22	2	2 ,	2	33.33	28.75	32.03
23	3	( ), ( )	2	16.67	31.25	33.99
. 4						
24	1		1	33.33	45.00	55.66
25	2	, ,	2	0.00	26.25	42.19
26	3		2	33.33	28.75	31.94

: 4

7

		( )		( )	( )	( )
1.						
. 4						
1	1		1	33.33	52.94	35.37
2	2		1	66.67	52.94	36.73
3	3		2	66.67	47.06	49.60
4	4	:	2	0.00	26.47	29.76
5	5		2	50.00	50.00	40.38
2.						
. 4						
6	1	, ,	2	33.33	35.19	41.85
7	2	, 2	2	50.00	54.63	68.05
8	3	, , ,	1	66.67	37.04	41.70
. 4						

9	1		1	33.33	40.74	53.57
10	2		2	0.00	7.41	12.51
11	3		2	50.00	31.48	36.43
3.						
. 4						
12	1		1	33.33	25.00	38.46
13	2		1	100.00	83.33	73.06
14	3		1	0.00	41.67	28.25
15	4		2	0.00	6.25	10.57
. 4 ?						
16	1		2	50.00	33.33	33.85
17	2		2	33.33	35.42	41.62
18	3		1	66.67	50.00	52.13
19	4		1	33.33	45.83	61.65
4.						
, 4						
20	1		1	33.33	35.42	45.08
21	2		2	0.00	25.00	19.39
22	3	( ' )	1	0.00	12.50	9.59
23	4		2	50.00	36.46	30.11
24	5		1	33.33	35.42	37.16
25	6		2	0.00	9.38	15.36
26	7		2	16.67	16.67	11.61

: 4

8

		( )		( )	( )	( )
--	--	-----	--	-----	-----	-----

1.						
. 4 .						
1	1		1	0.00	4.35	17.07
2	2		2	40.00	47.83	53.85
3	3		2	50.00	47.83	33.79
4	4		1	40.00	52.17	43.85
5	5		2	50.00	52.17	57.80
. 4 .						
6	1		1	20.00	21.74	29.77
7	2		1	20.00	21.74	36.67
8	3		2	30.00	60.87	53.45
9	4		2	50.00	56.52	53.75
2.						
, 4						
10	1		1	20.00	35.42	45.08
11	2		2	20.00	25.00	19.39
12	3	( . . ).	1	20.00	12.50	9.59
13	4		2	40.00	36.46	30.11
14	5		1	40.00	35.42	37.16
15	6		2	20.00	9.38	15.36
16	7		2	10.00	16.67	11.61
3.						
. 4 .						
17	1	« »	2	50.00	45.45	44.13
18	2	« »	4	25.00	28.03	26.03
19	3	« »	2	10.00	24.24	24.69

4.						
. 4						
20	1		2	10.00	35.19	41.85
21	2	2	2	50.00	54.63	68.05
22	3		1	20.00	37.04	41.70
. 4						
23	1		1	40.00	40.74	53.57
24	2		2	10.00	7.41	12.51
25	3		2	30.00	31.48	36.43

: 4

1

		( )		( )	( )	( )
1.						
. 4						
1	1		1	0.00	45.00	55.66
2	2		2	100.00	26.25	42.19
3	3		2	0.00	28.75	31.94
. 4						
4	1	( )	1	0.00	25.00	34.14
5	2	2	2	100.00	28.75	32.03
6	3	( ), ( )	2	0.00	31.25	33.99
2.						
. 4						
7	1		1	100.00	31.25	40.98
8	2		2	50.00	39.06	41.37

9	3		2	50.00	31.25	29.60
10	4		1	100.00	100.00	94.99
11	5		1	0.00	6.25	17.64
. 4						
12	1		1	0.00	43.75	60.08
13	2		2	50.00	64.06	65.02
14	3		2	50.00	34.38	46.45
15	4		1	0.00	9.38	16.24
3.						
. 4						
16	1		1	100.00	28.26	36.91
17	2		1	100.00	76.09	67.51
18	3		2	50.00	8.70	13.19
19	4		2	0.00	11.96	15.96
20	5		1	100.00	60.87	51.47
21	6	) ( -	1	100.00	28.26	27.17
22	7		1	100.00	47.83	37.32
23	8	/	2	50.00	40.22	38.36
4.						
. 4						
24	1		2	0.00	54.55	63.69
25	2		1	100.00	81.82	78.25
26	3		2	0.00	38.64	47.17
27	4		2	100.00	18.18	22.23

: 4

2

		( )		( )	( )	( )
--	--	-----	--	-----	-----	-----

1.						
. 4						
1	1		1	0.00	28.26	36.91
2	2		1	100.00	76.09	67.51
3	3		2	0.00	8.70	13.19
4	4		2	0.00	11.96	15.96
5	5		1	100.00	60.87	51.47
6	6	) ( -	1	100.00	28.26	27.17
7	7		1	100.00	47.83	37.32
8	8	/	2	100.00	40.22	38.36
2.						
. 4						
9	1		1	0.00	52.94	35.37
10	2		1	0.00	52.94	36.73
11	3		2	100.00	47.06	49.60
12	4	:	2	0.00	26.47	29.76
13	5		2	100.00	50.00	40.38
3.						
. 4						
14	1	( , )	1	0.00	25.00	34.14
15	2	2 ,	2	0.00	28.75	32.03
16	3	( ), ( )	2	0.00	31.25	33.99
. 4						
17	1		1	0.00	45.00	55.66
18	2	, ,	2	50.00	26.25	42.19
19	3		2	50.00	28.75	31.94

4.						
. 4 . ?						
20	1		2	0.00	20.00	24.89
21	2		1	100.00	80.00	74.56
22	3		2	0.00	0.00	24.23
23	4		1	100.00	33.33	48.19
. 4 .						
24	1		1	0.00	86.67	66.45
25	2		1	0.00	40.00	47.80
26	3		2	0.00	16.67	15.98
27	4		1	0.00	33.33	25.54

: 4

3

		( )		( )	( )	( )
1.						
. 4 .						
1	1	, ,	2	35.71	35.19	41.85
2	2	2 ,	2	71.43	54.63	68.05
3	3	, , ,	1	28.57	37.04	41.70
. 4 .						
4	1		1	14.29	40.74	53.57
5	2		2	0.00	7.41	12.51
6	3		2	71.43	31.48	36.43
2.						
. 4 .						

7	1		1	14.29	31.25	40.98
8	2		2	14.29	39.06	41.37
9	3		2	35.71	31.25	29.60
10	4		1	100.00	100.00	94.99
11	5		1	0.00	6.25	17.64
. 4						
12	1		1	57.14	43.75	60.08
13	2		2	71.43	64.06	65.02
14	3		2	42.86	34.38	46.45
15	4		1	0.00	9.38	16.24
3.						
. 4						
16	1	« »	2	28.57	45.45	44.13
17	2	« »	4	21.43	28.03	26.03
18	3	« »	2	28.57	24.24	24.69
4.						
. 4						
19	1		1	28.57	28.26	36.91
20	2		1	85.71	76.09	67.51
21	3		2	21.43	8.70	13.19
22	4		2	0.00	11.96	15.96
23	5		1	42.86	60.87	51.47
24	6	) ( -	1	0.00	28.26	27.17
25	7		1	28.57	47.83	37.32
26	8	/	2	42.86	40.22	38.36

: 4

4



		( )		( )	( )	( )
4.						
. 4						
1	1		2	50.00	54.55	63.69
2	2		1	100.00	81.82	78.25
3	3		2	100.00	38.64	47.17
4	4		2	50.00	18.18	22.23
2.						
. 4						
5	1		1	100.00	28.26	36.91
6	2		1	100.00	76.09	67.51
7	3		2	50.00	8.70	13.19
8	4		2	0.00	11.96	15.96
9	5		1	100.00	60.87	51.47
10	6	) ( -	1	0.00	28.26	27.17
11	7		1	100.00	47.83	37.32
12	8	/	2	100.00	40.22	38.36
3.						
. 4						
13	1		2	0.00	35.19	41.85
14	2	2	2	100.00	54.63	68.05
15	3		1	0.00	37.04	41.70
. 4						
16	1		1	100.00	40.74	53.57
17	2		2	0.00	7.41	12.51
18	3		2	100.00	31.48	36.43

4.						
. 4 .						
19	1		1	0.00	4.35	17.07
20	2		2	50.00	47.83	53.85
21	3		2	100.00	47.83	33.79
22	4		1	100.00	52.17	43.85
23	5		2	50.00	52.17	57.80
. 4 .						
24	1		1	0.00	21.74	29.77
25	2		1	0.00	21.74	36.67
26	3		2	100.00	60.87	53.45
27	4		2	100.00	56.52	53.75

: 4

5

		( )		( )	( )	( )
1.						
. 4 . ?						
1	1		2	8.33	20.00	24.89
2	2		1	66.67	80.00	74.56
3	3		2	0.00	0.00	24.23
4	4		1	33.33	33.33	48.19
. 4 .						
5	1		1	100.00	86.67	66.45
6	2		1	33.33	40.00	47.80
7	3		2	16.67	16.67	15.98

8	4		1	33.33	33.33	25.54
2.						
. 4						
9	1	( , )	1	0.00	25.00	34.14
10	2	2 ,	2	33.33	28.75	32.03
11	3	( ), ( )	2	50.00	31.25	33.99
. 4						
12	1		1	33.33	45.00	55.66
13	2	,	2	16.67	26.25	42.19
14	3		2	41.67	28.75	31.94
3.						
, 4						
15	1		1	16.67	35.42	45.08
16	2		2	33.33	25.00	19.39
17	3	( , ).	1	16.67	12.50	9.59
18	4		2	16.67	36.46	30.11
19	5		1	50.00	35.42	37.16
20	6		2	8.33	9.38	15.36
21	7		2	8.33	16.67	11.61
4.						
. 4						
22	1		1	50.00	63.64	56.92
23	2	:	2	0.00	4.55	20.45
24	3		2	33.33	29.55	38.05
25	4	:	1	33.33	31.82	37.32
26	5		2	0.00	9.09	17.25

: 4

6

		( )		( )	( )	( )
1.						
, 4						
1	1		1	100.00	35.42	45.08
2	2		2	100.00	25.00	19.39
3	3	( ' . ).	1	0.00	12.50	9.59
4	4		2	100.00	36.46	30.11
5	5		1	0.00	35.42	37.16
6	6		2	0.00	9.38	15.36
7	7		2	0.00	16.67	11.61
2.						
. 4						
8	1		1	0.00	25.00	38.46
9	2		1	100.00	83.33	73.06
10	3		1	0.00	41.67	28.25
11	4		2	0.00	6.25	10.57
. 4 ?						
12	1		2	50.00	33.33	33.85
13	2		2	0.00	35.42	41.62
14	3		1	100.00	50.00	52.13
15	4		1	100.00	45.83	61.65
3.						
. 4						
16	1		1	100.00	63.64	56.92

17	2	:	2	0.00	4.55	20.45
18	3		2	0.00	29.55	38.05
19	4	:	1	0.00	31.82	37.32
20	5		2	0.00	9.09	17.25
4.						
. 4						
21	1	( , )	1	0.00	25.00	34.14
22	2	2 ,	2	0.00	28.75	32.03
23	3	( ), ( )	2	50.00	31.25	33.99
. 4						
24	1		1	100.00	45.00	55.66
25	2	, ,	2	0.00	26.25	42.19
26	3		2	50.00	28.75	31.94

: 4

8

		( )		( )	( )	( )
1.						
. 4						
1	1	,	1	0.00	4.35	17.07
2	2	, ,	2	50.00	47.83	53.85
3	3	,	2	0.00	47.83	33.79
4	4	, ,	1	50.00	52.17	43.85
5	5	, ,	2	50.00	52.17	57.80
. 4						
6	1	, ,	1	0.00	21.74	29.77

7	2		1	0.00	21.74	36.67
8	3		2	75.00	60.87	53.45
9	4		2	25.00	56.52	53.75
2.						
, 4						
10	1		1	50.00	35.42	45.08
11	2		2	0.00	25.00	19.39
12	3	( ' . ).	1	0.00	12.50	9.59
13	4		2	25.00	36.46	30.11
14	5		1	0.00	35.42	37.16
15	6		2	0.00	9.38	15.36
16	7		2	25.00	16.67	11.61
3.						
. 4						
17	1	« »	2	100.00	45.45	44.13
18	2	« »	4	25.00	28.03	26.03
19	3	« »	2	50.00	24.24	24.69
4.						
. 4						
20	1		2	0.00	35.19	41.85
21	2	2	2	25.00	54.63	68.05
22	3		1	0.00	37.04	41.70
. 4						
23	1		1	50.00	40.74	53.57
24	2		2	0.00	7.41	12.51
25	3		2	50.00	31.48	36.43

: 4

1

		( )		( )	( )	( )
1.						
. 4						
1	1		1	25.00	45.00	55.66
2	2		2	37.50	26.25	42.19
3	3		2	12.50	28.75	31.94
. 4						
4	1	( )	1	0.00	25.00	34.14
5	2	2	2	25.00	28.75	32.03
6	3	( ), ( )	2	37.50	31.25	33.99
2.						
. 4						
7	1		1	25.00	31.25	40.98
8	2		2	50.00	39.06	41.37
9	3		2	25.00	31.25	29.60
10	4		1	100.00	100.00	94.99
11	5		1	0.00	6.25	17.64
. 4						
12	1		1	25.00	43.75	60.08
13	2		2	75.00	64.06	65.02
14	3		2	25.00	34.38	46.45
15	4		1	0.00	9.38	16.24
3.						
. 4						

. 4						
16	1		1	25.00	28.26	36.91
17	2		1	75.00	76.09	67.51
18	3		2	0.00	8.70	13.19
19	4		2	12.50	11.96	15.96
20	5		1	75.00	60.87	51.47
21	6	) ( -	1	25.00	28.26	27.17
22	7		1	50.00	47.83	37.32
23	8	/	2	37.50	40.22	38.36
4.						
. 4						
24	1		2	62.50	54.55	63.69
25	2		1	75.00	81.82	78.25
26	3		2	37.50	38.64	47.17
27	4		2	12.50	18.18	22.23

: 4

2

		( )		( )	( )	( )
1.						
. 4						
1	1		1	100.00	28.26	36.91
2	2		1	100.00	76.09	67.51
3	3		2	0.00	8.70	13.19
4	4		2	0.00	11.96	15.96
5	5		1	100.00	60.87	51.47
6	6	) ( -	1	0.00	28.26	27.17
7	7		1	100.00	47.83	37.32



8	8	/	2	0.00	40.22	38.36
2.						
. 4						
9	1		1	100.00	52.94	35.37
10	2		1	0.00	52.94	36.73
11	3		2	50.00	47.06	49.60
12	4	:	2	50.00	26.47	29.76
13	5		2	100.00	50.00	40.38
3.						
. 4						
14	1	( , )	1	100.00	25.00	34.14
15	2	2 ,	2	0.00	28.75	32.03
16	3	( ), ( )	2	0.00	31.25	33.99
. 4						
17	1		1	100.00	45.00	55.66
18	2	, ,	2	50.00	26.25	42.19
19	3		2	50.00	28.75	31.94
4.						
. 4 ?						
20	1		2	0.00	20.00	24.89
21	2		1	100.00	80.00	74.56
22	3		2	0.00	0.00	24.23
23	4	,	1	0.00	33.33	48.19
. 4						
24	1	,	1	100.00	86.67	66.45
25	2		1	100.00	40.00	47.80
26	3		2	0.00	16.67	15.98

27	4	,	1	0.00	33.33	25.54
----	---	---	---	------	-------	-------

: 4

4

		( )		( )	( )	( )
4.						
. 4						
1	1		2	37.50	54.55	63.69
2	2		1	75.00	81.82	78.25
3	3		2	25.00	38.64	47.17
4	4		2	37.50	18.18	22.23
2.						
. 4						
5	1		1	25.00	28.26	36.91
6	2	,	1	75.00	76.09	67.51
7	3		2	0.00	8.70	13.19
8	4	,	2	0.00	11.96	15.96
9	5		1	25.00	60.87	51.47
10	6	) ( -	1	25.00	28.26	27.17
11	7		1	25.00	47.83	37.32
12	8	/	2	12.50	40.22	38.36
3.						
. 4						
13	1	,	2	25.00	35.19	41.85
14	2	2	2	62.50	54.63	68.05
15	3	,	1	25.00	37.04	41.70

. 4 .						
16	1		1	0.00	40.74	53.57
17	2		2	0.00	7.41	12.51
18	3		2	12.50	31.48	36.43
4.						
. 4 .						
19	1		1	25.00	4.35	17.07
20	2		2	50.00	47.83	53.85
21	3		2	25.00	47.83	33.79
22	4		1	50.00	52.17	43.85
23	5		2	62.50	52.17	57.80
. 4 .						
24	1		1	0.00	21.74	29.77
25	2		1	25.00	21.74	36.67
26	3		2	50.00	60.87	53.45
27	4		2	50.00	56.52	53.75

: 4

5

		( )		( )	( )	( )
1.						
. 4 . ?						
1	1		2	25.00	20.00	24.89
2	2		1	100.00	80.00	74.56
3	3		2	0.00	0.00	24.23
4	4		1	0.00	33.33	48.19

. 4						
5	1		1	100.00	86.67	66.45
6	2		1	0.00	40.00	47.80
7	3		2	0.00	16.67	15.98
8	4		1	0.00	33.33	25.54
2.						
. 4						
9	1	(	1	50.00	25.00	34.14
10	2	2	2	0.00	28.75	32.03
11	3	( ),	2	50.00	31.25	33.99
. 4						
12	1		1	50.00	45.00	55.66
13	2		2	25.00	26.25	42.19
14	3		2	0.00	28.75	31.94
3.						
, 4						
15	1		1	100.00	35.42	45.08
16	2		2	0.00	25.00	19.39
17	3	(	1	100.00	12.50	9.59
18	4		2	100.00	36.46	30.11
19	5		1	0.00	35.42	37.16
20	6		2	0.00	9.38	15.36
21	7		2	25.00	16.67	11.61
4.						
. 4						
22	1		1	0.00	63.64	56.92

23	2	:	2	0.00	4.55	20.45
24	3		2	50.00	29.55	38.05
25	4	:	1	50.00	31.82	37.32
26	5		2	25.00	9.09	17.25

: 4

6

		( )		( )	( )	( )
1.						
, 4						
1	1		1	100.00	35.42	45.08
2	2		2	0.00	25.00	19.39
3	3	( ' , )	1	0.00	12.50	9.59
4	4		2	0.00	36.46	30.11
5	5		1	0.00	35.42	37.16
6	6		2	0.00	9.38	15.36
7	7		2	50.00	16.67	11.61
2.						
. 4						
8	1		1	100.00	25.00	38.46
9	2		1	100.00	83.33	73.06
10	3		1	100.00	41.67	28.25
11	4		2	0.00	6.25	10.57
. 4 ?						
12	1		2	100.00	33.33	33.85
13	2		2	100.00	35.42	41.62
14	3		1	100.00	50.00	52.13
15	4		1	0.00	45.83	61.65

3.						
. 4						
16	1		1	100.00	63.64	56.92
17	2	:	2	0.00	4.55	20.45
18	3		2	50.00	29.55	38.05
19	4	:	1	0.00	31.82	37.32
20	5		2	100.00	9.09	17.25
4.						
. 4						
21	1	( , )	1	100.00	25.00	34.14
22	2	2 ,	2	100.00	28.75	32.03
23	3	( ), ( )	2	0.00	31.25	33.99
. 4						
24	1		1	100.00	45.00	55.66
25	2	, ,	2	100.00	26.25	42.19
26	3		2	0.00	28.75	31.94

: 4

7

		( )		( )	( )	( )
1.						
. 4						
1	1		1	50.00	52.94	35.37
2	2		1	50.00	52.94	36.73
3	3		2	50.00	47.06	49.60
4	4	:	2	50.00	26.47	29.76
5	5		2	50.00	50.00	40.38

2.						
. 4						
6	1		2	25.00	35.19	41.85
7	2	2	2	50.00	54.63	68.05
8	3		1	0.00	37.04	41.70
. 4						
9	1		1	50.00	40.74	53.57
10	2		2	25.00	7.41	12.51
11	3		2	50.00	31.48	36.43
3.						
. 4						
12	1		1	50.00	25.00	38.46
13	2		1	100.00	83.33	73.06
14	3		1	0.00	41.67	28.25
15	4		2	0.00	6.25	10.57
. 4 ?						
16	1		2	50.00	33.33	33.85
17	2		2	75.00	35.42	41.62
18	3		1	50.00	50.00	52.13
19	4		1	50.00	45.83	61.65
4.						
, 4						
20	1		1	50.00	35.42	45.08
21	2		2	0.00	25.00	19.39
22	3	(	1	0.00	12.50	9.59
23	4		2	0.00	36.46	30.11

24	5		1	50.00	35.42	37.16
25	6		2	0.00	9.38	15.36
26	7		2	25.00	16.67	11.61

: 4

8

		( )		( )	( )	( )
1.						
. 4						
1	1		1	0.00	4.35	17.07
2	2		2	50.00	47.83	53.85
3	3		2	0.00	47.83	33.79
4	4		1	0.00	52.17	43.85
5	5		2	50.00	52.17	57.80
. 4						
6	1		1	0.00	21.74	29.77
7	2		1	0.00	21.74	36.67
8	3		2	0.00	60.87	53.45
9	4		2	0.00	56.52	53.75
2.						
, 4						
10	1		1	0.00	35.42	45.08
11	2		2	0.00	25.00	19.39
12	3	( ' . . ).	1	0.00	12.50	9.59
13	4		2	0.00	36.46	30.11
14	5		1	0.00	35.42	37.16



15	6		2	0.00	9.38	15.36
16	7		2	0.00	16.67	11.61
3.						
. 4						
17	1	« »	2	0.00	45.45	44.13
18	2	« ' »	4	25.00	28.03	26.03
19	3	« - ' »	2	0.00	24.24	24.69
4.						
. 4						
20	1	, ' ,	2	0.00	35.19	41.85
21	2	' 2	2	50.00	54.63	68.05
22	3	, ' ,	1	0.00	37.04	41.70
. 4						
23	1	'	1	0.00	40.74	53.57
24	2		2	0.00	7.41	12.51
25	3		2	0.00	31.48	36.43

: 4

1

		( )		( )	( )	( )
1.						
. 4						
1	1		1	50.00	45.00	55.66
2	2	' ,	2	25.00	26.25	42.19
3	3		2	0.00	28.75	31.94
. 4						

4	1	( , )	1	50.00	25.00	34.14
5	2	2 ,	2	0.00	28.75	32.03
6	3	( ), ( )	2	0.00	31.25	33.99
2.						
. 4						
7	1	,	1	0.00	31.25	40.98
8	2	,	2	50.00	39.06	41.37
9	3	,	2	0.00	31.25	29.60
10	4	,	1	100.00	100.00	94.99
11	5	,	1	0.00	6.25	17.64
. 4						
12	1	,	1	50.00	43.75	60.08
13	2	,	2	50.00	64.06	65.02
14	3	,	2	50.00	34.38	46.45
15	4	,	1	0.00	9.38	16.24
3.						
. 4						
16	1	,	1	0.00	28.26	36.91
17	2	,	1	50.00	76.09	67.51
18	3	,	2	0.00	8.70	13.19
19	4	,	2	25.00	11.96	15.96
20	5	,	1	0.00	60.87	51.47
21	6	) ( -	1	50.00	28.26	27.17
22	7	,	1	100.00	47.83	37.32
23	8	/	2	0.00	40.22	38.36
4.						

. 4						
24	1		2	50.00	54.55	63.69
25	2		1	50.00	81.82	78.25
26	3		2	50.00	38.64	47.17
27	4		2	0.00	18.18	22.23

: 4

2

		( )		( )	( )	( )
1.						
. 4						
1	1		1	0.00	28.26	36.91
2	2		1	100.00	76.09	67.51
3	3		2	0.00	8.70	13.19
4	4		2	50.00	11.96	15.96
5	5		1	100.00	60.87	51.47
6	6	) ( -	1	0.00	28.26	27.17
7	7		1	0.00	47.83	37.32
8	8	/	2	0.00	40.22	38.36
2.						
. 4						
9	1		1	100.00	52.94	35.37
10	2		1	0.00	52.94	36.73
11	3		2	0.00	47.06	49.60
12	4	:	2	50.00	26.47	29.76
13	5		2	50.00	50.00	40.38
3.						
. 4						

14	1	( , )	1	0.00	25.00	34.14
15	2	2 ,	2	50.00	28.75	32.03
16	3	( ), ( )	2	0.00	31.25	33.99
. 4 .						
17	1		1	100.00	45.00	55.66
18	2	, ,	2	0.00	26.25	42.19
19	3		2	50.00	28.75	31.94
4.						
. 4 . ?						
20	1		2	50.00	20.00	24.89
21	2		1	100.00	80.00	74.56
22	3		2	0.00	0.00	24.23
23	4	,	1	100.00	33.33	48.19
. 4 .						
24	1	,	1	0.00	86.67	66.45
25	2		1	100.00	40.00	47.80
26	3		2	50.00	16.67	15.98
27	4	,	1	100.00	33.33	25.54

: 4

3

		( )		( )	( )	( )
1.						
. 4						
1	1	, ,	2	10.00	35.19	41.85
2	2	2 ,	2	50.00	54.63	68.05

3	3		1	0.00	37.04	41.70
. 4						
4	1		1	0.00	40.74	53.57
5	2		2	0.00	7.41	12.51
6	3		2	0.00	31.48	36.43
2.						
. 4						
7	1		1	20.00	31.25	40.98
8	2		2	10.00	39.06	41.37
9	3		2	40.00	31.25	29.60
10	4		1	100.00	100.00	94.99
11	5		1	0.00	6.25	17.64
. 4						
12	1		1	0.00	43.75	60.08
13	2		2	60.00	64.06	65.02
14	3		2	10.00	34.38	46.45
15	4		1	0.00	9.38	16.24
3.						
. 4						
16	1	« »	2	40.00	45.45	44.13
17	2	« »	4	30.00	28.03	26.03
18	3	« »	2	30.00	24.24	24.69
4.						
. 4						
19	1		1	0.00	28.26	36.91
20	2		1	60.00	76.09	67.51
21	3		2	0.00	8.70	13.19

22	4	,	2	40.00	11.96	15.96
23	5		1	60.00	60.87	51.47
24	6	) ( -	1	0.00	28.26	27.17
25	7		1	40.00	47.83	37.32
26	8	/	2	30.00	40.22	38.36

: 4

4

		( )		( )	( )	( )
4.						
. 4						
1	1		2	50.00	54.55	63.69
2	2		1	100.00	81.82	78.25
3	3		2	75.00	38.64	47.17
4	4		2	25.00	18.18	22.23
2.						
. 4						
5	1		1	100.00	28.26	36.91
6	2	,	1	100.00	76.09	67.51
7	3		2	25.00	8.70	13.19
8	4	,	2	0.00	11.96	15.96
9	5		1	100.00	60.87	51.47
10	6	) ( -	1	50.00	28.26	27.17
11	7		1	100.00	47.83	37.32
12	8	/	2	50.00	40.22	38.36
3.						
. 4						

13	1		2	100.00	35.19	41.85
14	2	2	2	50.00	54.63	68.05
15	3		1	100.00	37.04	41.70
. 4 .						
16	1		1	50.00	40.74	53.57
17	2		2	25.00	7.41	12.51
18	3		2	50.00	31.48	36.43
4.						
. 4 .						
19	1		1	0.00	4.35	17.07
20	2		2	50.00	47.83	53.85
21	3		2	100.00	47.83	33.79
22	4		1	50.00	52.17	43.85
23	5		2	75.00	52.17	57.80
. 4 .						
24	1		1	100.00	21.74	29.77
25	2		1	0.00	21.74	36.67
26	3		2	50.00	60.87	53.45
27	4		2	100.00	56.52	53.75

: 4

5

		( )		( )	( )	( )
1.						
. 4 . ?						

1	1		2	25.00	20.00	24.89
2	2		1	50.00	80.00	74.56
3	3		2	0.00	0.00	24.23
4	4		1	0.00	33.33	48.19
. 4						
5	1		1	100.00	86.67	66.45
6	2		1	50.00	40.00	47.80
7	3		2	50.00	16.67	15.98
8	4		1	50.00	33.33	25.54
2.						
. 4						
9	1	( , )	1	0.00	25.00	34.14
10	2	2 ,	2	0.00	28.75	32.03
11	3	( ), ( )	2	0.00	31.25	33.99
. 4						
12	1		1	100.00	45.00	55.66
13	2	,	2	0.00	26.25	42.19
14	3		2	0.00	28.75	31.94
3.						
, 4						
15	1		1	50.00	35.42	45.08
16	2		2	0.00	25.00	19.39
17	3	( , ).	1	0.00	12.50	9.59
18	4		2	0.00	36.46	30.11
19	5		1	50.00	35.42	37.16
20	6		2	25.00	9.38	15.36



21	7		2	0.00	16.67	11.61
4.						
. 4						
22	1		1	50.00	63.64	56.92
23	2	:	2	25.00	4.55	20.45
24	3		2	25.00	29.55	38.05
25	4	:	1	0.00	31.82	37.32
26	5		2	0.00	9.09	17.25

: 4

6

		( )		( )	( )	( )
1.						
, 4						
1	1		1	50.00	35.42	45.08
2	2		2	100.00	25.00	19.39
3	3	( ' , ).	1	50.00	12.50	9.59
4	4		2	25.00	36.46	30.11
5	5		1	50.00	35.42	37.16
6	6		2	25.00	9.38	15.36
7	7		2	0.00	16.67	11.61
2.						
. 4						
8	1		1	0.00	25.00	38.46
9	2		1	100.00	83.33	73.06
10	3	,	1	50.00	41.67	28.25
11	4		2	0.00	6.25	10.57

. 4 ?						
12	1		2	0.00	33.33	33.85
13	2		2	0.00	35.42	41.62
14	3		1	0.00	50.00	52.13
15	4		1	50.00	45.83	61.65
3.						
. 4						
16	1		1	100.00	63.64	56.92
17	2	:	2	0.00	4.55	20.45
18	3		2	25.00	29.55	38.05
19	4	:	1	0.00	31.82	37.32
20	5		2	0.00	9.09	17.25
4.						
. 4						
21	1	( , )	1	0.00	25.00	34.14
22	2	2 ,	2	0.00	28.75	32.03
23	3	( ), ( )	2	50.00	31.25	33.99
. 4						
24	1		1	0.00	45.00	55.66
25	2	, ,	2	0.00	26.25	42.19
26	3		2	0.00	28.75	31.94

: 4

7

		( )		( )	( )	( )
1.						
. 4						

1	1		1	40.00	52.94	35.37
2	2		1	60.00	52.94	36.73
3	3		2	30.00	47.06	49.60
4	4	:	2	20.00	26.47	29.76
5	5		2	30.00	50.00	40.38
2.						
. 4						
6	1	,	2	20.00	35.19	41.85
7	2	2	2	30.00	54.63	68.05
8	3	,	1	0.00	37.04	41.70
. 4						
9	1	,	1	40.00	40.74	53.57
10	2		2	0.00	7.41	12.51
11	3		2	10.00	31.48	36.43
3.						
. 4						
12	1		1	0.00	25.00	38.46
13	2		1	60.00	83.33	73.06
14	3	,	1	40.00	41.67	28.25
15	4		2	0.00	6.25	10.57
. 4 ?						
16	1	,	2	30.00	33.33	33.85
17	2		2	20.00	35.42	41.62
18	3		1	20.00	50.00	52.13
19	4	,	1	20.00	45.83	61.65
4.						
, 4						

20	1		1	60.00	35.42	45.08
21	2		2	20.00	25.00	19.39
22	3	( )	1	20.00	12.50	9.59
23	4		2	60.00	36.46	30.11
24	5		1	60.00	35.42	37.16
25	6		2	10.00	9.38	15.36
26	7		2	0.00	16.67	11.61

: 4

8

		( )		( )	( )	( )
1.						
. 4						
1	1		1	0.00	4.35	17.07
2	2		2	50.00	47.83	53.85
3	3		2	50.00	47.83	33.79
4	4		1	50.00	52.17	43.85
5	5		2	25.00	52.17	57.80
. 4						
6	1		1	0.00	21.74	29.77
7	2		1	0.00	21.74	36.67
8	3		2	100.00	60.87	53.45
9	4		2	75.00	56.52	53.75
2.						
, 4						
10	1		1	0.00	35.42	45.08

11	2		2	0.00	25.00	19.39
12	3	( ' ' ).	1	0.00	12.50	9.59
13	4		2	50.00	36.46	30.11
14	5		1	0.00	35.42	37.16
15	6		2	0.00	9.38	15.36
16	7		2	25.00	16.67	11.61
3.						
. 4						
17	1	« »	2	25.00	45.45	44.13
18	2	« ' »	4	12.50	28.03	26.03
19	3	- ' »	2	0.00	24.24	24.69
4.						
. 4						
20	1	, ' ,	2	75.00	35.19	41.85
21	2	, 2	2	50.00	54.63	68.05
22	3	, ' ,	1	100.00	37.04	41.70
. 4						
23	1	,	1	0.00	40.74	53.57
24	2		2	0.00	7.41	12.51
25	3		2	0.00	31.48	36.43

3.2.

1

4Г, Ученик №2

Вариант 1

		( )			( )	( )	( )
1.							
. 4 .							
1	1		1	0	50.00	45.00	55.66
2	2		2	0	43.75	26.25	42.19
3	3		2	0	12.50	28.75	31.94
. 4 .							
4	1	( , )	1	0	37.50	25.00	34.14
5	2	2 ,	2	0	25.00	28.75	32.03
6	3	( ), ( )	2	1	31.25	31.25	33.99
2.							
. 4 .							
7	1		1	0	25.00	31.25	40.98
8	2		2	0	50.00	39.06	41.37
9	3		2	0	25.00	31.25	29.60
10	4		1	1	100.00	100.00	94.99
11	5		1	0	0.00	6.25	17.64
. 4 .							
12	1		1	0	25.00	43.75	60.08
13	2		2	2	75.00	64.06	65.02
14	3		2	0	25.00	34.38	46.45

		( )			( )	( )	( )
15	4		1	0	0.00	9.38	16.24
3.							
. 4							
16	1		1	0	33.33	28.26	36.91
17	2		1	0	77.78	76.09	67.51
18	3		2	0	0.00	8.70	13.19
19	4		2	0	5.56	11.96	15.96
20	5		1	0	55.56	60.87	51.47
21	6	) ( -	1	0	22.22	28.26	27.17
22	7		1	0	44.44	47.83	37.32
23	8	/	2	0	22.22	40.22	38.36
. 4							
24	1		2	1	50.00	54.55	63.69
25	2		1	0	75.00	81.82	78.25
26	3		2	1	31.25	38.64	47.17
27	4		2	0	25.00	18.18	22.23

4Г, Ученик №6

Вариант 1

		( )			( )	( )	( )
1.							
. 4							
1	1		1	0	50.00	45.00	55.66
2	2		2	0	43.75	26.25	42.19
3	3		2	0	12.50	28.75	31.94
. 4							

		( )			( )	( )	( )
4	1	( , )	1	0	37.50	25.00	34.14
5	2	2 ,	2	0	25.00	28.75	32.03
6	3	( ), ( )	2	0	31.25	31.25	33.99
2.							
. 4							
7	1	, .	1	1	25.00	31.25	40.98
8	2	, .	2	1	50.00	39.06	41.37
9	3	, .	2	1	25.00	31.25	29.60
10	4	, .	1	1	100.00	100.00	94.99
11	5	, .	1	0	0.00	6.25	17.64
. 4							
12	1	, .	1	0	25.00	43.75	60.08
13	2	, , .	2	0	75.00	64.06	65.02
14	3	, .	2	0	25.00	34.38	46.45
15	4	, .	1	0	0.00	9.38	16.24
3.							
. 4							
16	1	, .	1	1	33.33	28.26	36.91
17	2	, .	1	1	77.78	76.09	67.51
18	3	, .	2	0	0.00	8.70	13.19
19	4	, .	2	0	5.56	11.96	15.96
20	5	, .	1	1	55.56	60.87	51.47
21	6	) ( -	1	1	22.22	28.26	27.17
22	7	, .	1	1	44.44	47.83	37.32
23	8	/ .	2	2	22.22	40.22	38.36



		( )			( )	( )	( )
. 4 .							
24	1		2	1	50.00	54.55	63.69
25	2		1	1	75.00	81.82	78.25
26	3		2	0	31.25	38.64	47.17
27	4		2	0	25.00	18.18	22.23

4Б, Ученик №9

Вариант 1

		( )			( )	( )	( )
1.							
. 4 .							
1	1		1	0	20.00	45.00	55.66
2	2		2	0	0.00	26.25	42.19
3	3		2	0	20.00	28.75	31.94
. 4 .							
4	1	( , )	1	0	40.00	25.00	34.14
5	2	2 ,	2	0	30.00	28.75	32.03
6	3	( ), ( )	2	2	30.00	31.25	33.99
2.							
. 4 .							
7	1		1	0	33.33	31.25	40.98
8	2		2	0	66.67	39.06	41.37
9	3		2	0	33.33	31.25	29.60
10	4		1	1	100.00	100.00	94.99
11	5		1	0	0.00	6.25	17.64

		( )			( )	( )	( )
. 4							
12	1		1	0	0.00	43.75	60.08
13	2		2	1	66.67	64.06	65.02
14	3		2	1	50.00	34.38	46.45
15	4		1	0	33.33	9.38	16.24
3.							
. 4							
16	1		1	0	40.00	28.26	36.91
17	2		1	0	60.00	76.09	67.51
18	3		2	0	0.00	8.70	13.19
19	4		2	0	0.00	11.96	15.96
20	5		1	0	60.00	60.87	51.47
21	6	) ( -	1	0	0.00	28.26	27.17
22	7		1	0	20.00	47.83	37.32
23	8	/	2	0	20.00	40.22	38.36
. 4							
24	1		2	1	75.00	54.55	63.69
25	2		1	1	100.00	81.82	78.25
26	3		2	1	50.00	38.64	47.17
27	4		2	0	0.00	18.18	22.23

4Д, Ученик №10

Вариант 1

		( )			( )	( )	( )
1.							
. 4							

		( )			( )	( )	( )
1	1		1	1	57.14	45.00	55.66
2	2		2	0	7.14	26.25	42.19
3	3		2	0	7.14	28.75	31.94
. 4							
4	1	( )	1	0	14.29	25.00	34.14
5	2	2	2	0	7.14	28.75	32.03
6	3	( ), ( )	2	0	14.29	31.25	33.99
2.							
. 4							
7	1		1	0	14.29	31.25	40.98
8	2		2	0	21.43	39.06	41.37
9	3		2	0	28.57	31.25	29.60
10	4		1	1	100.00	100.00	94.99
11	5		1	0	0.00	6.25	17.64
. 4							
12	1		1	1	14.29	43.75	60.08
13	2		2	1	57.14	64.06	65.02
14	3		2	0	21.43	34.38	46.45
15	4		1	0	0.00	9.38	16.24
3.							
. 4							
16	1		1	0	20.00	28.26	36.91
17	2		1	0	70.00	76.09	67.51
18	3		2	0	5.00	8.70	13.19
19	4		2	1	30.00	11.96	15.96
20	5		1	0	60.00	60.87	51.47

		( )			( )	( )	( )
21	6	) ( -	1	0	20.00	28.26	27.17
22	7		1	1	60.00	47.83	37.32
23	8	/	2	0	25.00	40.22	38.36
. 4							
24	1		2	0	50.00	54.55	63.69
25	2		1	1	75.00	81.82	78.25
26	3		2	0	62.50	38.64	47.17
27	4		2	0	12.50	18.18	22.23

#### 4А, Ученик №11

##### Вариант 1

		( )			( )	( )	( )
1.							
. 4							
1	1		1	0	54.55	45.00	55.66
2	2	,	2	0	36.36	26.25	42.19
3	3		2	1	50.00	28.75	31.94
. 4							
4	1	( , )	1	0	36.36	25.00	34.14
5	2	2 ,	2	2	40.91	28.75	32.03
6	3	( ), ( )	2	2	36.36	31.25	33.99
2.							
. 4							
7	1	,	1	1	50.00	31.25	40.98
8	2	,	2	2	55.00	39.06	41.37

		( )			( )	( )	( )
9	3		2	1	30.00	31.25	29.60
10	4		1	1	100.00	100.00	94.99
11	5		1	1	20.00	6.25	17.64
. 4							
12	1		1	1	80.00	43.75	60.08
13	2		2	1	60.00	64.06	65.02
14	3		2	0	35.00	34.38	46.45
15	4		1	0	20.00	9.38	16.24
3.							
. 4							
16	1		1	0	16.67	28.26	36.91
17	2		1	1	75.00	76.09	67.51
18	3		2	0	8.33	8.70	13.19
19	4		2	1	16.67	11.96	15.96
20	5		1	0	66.67	60.87	51.47
21	6	) ( -	1	0	58.33	28.26	27.17
22	7		1	0	50.00	47.83	37.32
23	8	/	2	1	62.50	40.22	38.36
. 4							
24	1		2	2	66.67	54.55	63.69
25	2		1	1	83.33	81.82	78.25
26	3		2	0	25.00	38.64	47.17
27	4		2	0	0.00	18.18	22.23

4А, Ученик №12

Вариант 1

		( )			( )	( )	( )
--	--	-----	--	--	-----	-----	-----

		( )			( )	( )	( )
1.							
. 4							
1	1		1	1	54.55	45.00	55.66
2	2		2	0	36.36	26.25	42.19
3	3		2	0	50.00	28.75	31.94
. 4							
4	1	( )	1	0	36.36	25.00	34.14
5	2	2	2	0	40.91	28.75	32.03
6	3	( ), ( )	2	0	36.36	31.25	33.99
2.							
. 4							
7	1		1	1	50.00	31.25	40.98
8	2		2	2	55.00	39.06	41.37
9	3		2	1	30.00	31.25	29.60
10	4		1	1	100.00	100.00	94.99
11	5		1	0	20.00	6.25	17.64
. 4							
12	1		1	1	80.00	43.75	60.08
13	2		2	1	60.00	64.06	65.02
14	3		2	0	35.00	34.38	46.45
15	4		1	0	20.00	9.38	16.24
3.							
. 4							
16	1		1	0	16.67	28.26	36.91
17	2		1	0	75.00	76.09	67.51

		( )			( )	( )	( )
18	3		2	0	8.33	8.70	13.19
19	4		2	0	16.67	11.96	15.96
20	5		1	0	66.67	60.87	51.47
21	6	) ( -	1	0	58.33	28.26	27.17
22	7		1	0	50.00	47.83	37.32
23	8	/	2	1	62.50	40.22	38.36
. 4							
24	1		2	0	66.67	54.55	63.69
25	2		1	0	83.33	81.82	78.25
26	3		2	0	25.00	38.64	47.17
27	4		2	0	0.00	18.18	22.23

4Г, Ученик №16

Вариант 1

		( )			( )	( )	( )
1.							
. 4							
1	1		1	1	50.00	45.00	55.66
2	2	,	2	2	43.75	26.25	42.19
3	3		2	0	12.50	28.75	31.94
. 4							
4	1	( , )	1	0	37.50	25.00	34.14
5	2	2 ,	2	0	25.00	28.75	32.03
6	3	( ), ( )	2	2	31.25	31.25	33.99
2.							

		( )			( )	( )	( )
. 4							
7	1		1	0	25.00	31.25	40.98
8	2		2	2	50.00	39.06	41.37
9	3		2	1	25.00	31.25	29.60
10	4		1	1	100.00	100.00	94.99
11	5		1	0	0.00	6.25	17.64
. 4							
12	1		1	1	25.00	43.75	60.08
13	2		2	2	75.00	64.06	65.02
14	3		2	0	25.00	34.38	46.45
15	4		1	0	0.00	9.38	16.24
3.							
. 4							
16	1		1	0	33.33	28.26	36.91
17	2		1	1	77.78	76.09	67.51
18	3		2	0	0.00	8.70	13.19
19	4		2	1	5.56	11.96	15.96
20	5		1	1	55.56	60.87	51.47
21	6	) ( -	1	0	22.22	28.26	27.17
22	7		1	0	44.44	47.83	37.32
23	8	/	2	0	22.22	40.22	38.36
. 4							
24	1		2	2	50.00	54.55	63.69
25	2		1	1	75.00	81.82	78.25
26	3		2	1	31.25	38.64	47.17



		( )			( )	( )	( )
27	4		2	0	25.00	18.18	22.23

#### 4А, Ученик №17

#### Вариант 1

		( )			( )	( )	( )
1.							
. 4							
1	1		1	1	54.55	45.00	55.66
2	2		2	0	36.36	26.25	42.19
3	3		2	2	50.00	28.75	31.94
. 4							
4	1	( , )	1	0	36.36	25.00	34.14
5	2	2 ,	2	2	40.91	28.75	32.03
6	3	( ), ( )	2	1	36.36	31.25	33.99
2.							
. 4							
7	1		1	1	50.00	31.25	40.98
8	2		2	0	55.00	39.06	41.37
9	3		2	0	30.00	31.25	29.60
10	4		1	1	100.00	100.00	94.99
11	5		1	0	20.00	6.25	17.64
. 4							
12	1		1	1	80.00	43.75	60.08
13	2		2	2	60.00	64.06	65.02
14	3		2	0	35.00	34.38	46.45
15	4		1	1	20.00	9.38	16.24
3.							

		( )			( )	( )	( )
. 4							
16	1		1	0	16.67	28.26	36.91
17	2		1	1	75.00	76.09	67.51
18	3		2	1	8.33	8.70	13.19
19	4		2	0	16.67	11.96	15.96
20	5		1	1	66.67	60.87	51.47
21	6	) ( -	1	1	58.33	28.26	27.17
22	7		1	1	50.00	47.83	37.32
23	8	/	2	1	62.50	40.22	38.36
. 4							
24	1		2	2	66.67	54.55	63.69
25	2		1	1	83.33	81.82	78.25
26	3		2	0	25.00	38.64	47.17
27	4		2	0	0.00	18.18	22.23

4Г, Ученик №18

Вариант 1

		( )			( )	( )	( )
1.							
. 4							
1	1		1	0	50.00	45.00	55.66
2	2		2	1	43.75	26.25	42.19
3	3		2	1	12.50	28.75	31.94
. 4							
4	1	( , )	1	0	37.50	25.00	34.14
5	2	2 ,	2	2	25.00	28.75	32.03

		( )			( )	( )	( )
6	3	( ), ( )	2	0	31.25	31.25	33.99
2.							
. 4							
7	1	'	1	0	25.00	31.25	40.98
8	2	'	2	1	50.00	39.06	41.37
9	3	'	2	0	25.00	31.25	29.60
10	4	'	1	1	100.00	100.00	94.99
11	5	'	1	0	0.00	6.25	17.64
. 4							
12	1	'	1	0	25.00	43.75	60.08
13	2	'	2	2	75.00	64.06	65.02
14	3	'	2	2	25.00	34.38	46.45
15	4	'	1	0	0.00	9.38	16.24
3.							
. 4							
16	1	'	1	0	33.33	28.26	36.91
17	2	'	1	1	77.78	76.09	67.51
18	3	'	2	0	0.00	8.70	13.19
19	4	'	2	0	5.56	11.96	15.96
20	5	'	1	1	55.56	60.87	51.47
21	6	) ( -	1	0	22.22	28.26	27.17
22	7	'	1	1	44.44	47.83	37.32
23	8	/	2	1	22.22	40.22	38.36
. 4							

		( )			( )	( )	( )
24	1		2	1	50.00	54.55	63.69
25	2		1	1	75.00	81.82	78.25
26	3		2	1	31.25	38.64	47.17
27	4		2	1	25.00	18.18	22.23

## 4В, Ученик №19

### Вариант 1

		( )			( )	( )	( )
1.							
. 4							
1	1		1	0	33.33	45.00	55.66
2	2		2	2	27.78	26.25	42.19
3	3		2	0	38.89	28.75	31.94
. 4							
4	1	( , )	1	0	0.00	25.00	34.14
5	2	2 ,	2	2	33.33	28.75	32.03
6	3	( ), ( )	2	0	38.89	31.25	33.99
2.							
. 4							
7	1		1	1	25.00	31.25	40.98
8	2		2	1	18.75	39.06	41.37
9	3		2	1	37.50	31.25	29.60
10	4		1	1	100.00	100.00	94.99
11	5		1	0	0.00	6.25	17.64
. 4							
12	1		1	0	50.00	43.75	60.08
13	2		2	1	68.75	64.06	65.02

		( )			( )	( )	( )
14	3		2	1	43.75	34.38	46.45
15	4		1	0	0.00	9.38	16.24
3.							
. 4							
16	1		1	1	40.00	28.26	36.91
17	2		1	1	90.00	76.09	67.51
18	3		2	1	25.00	8.70	13.19
19	4		2	0	0.00	11.96	15.96
20	5		1	1	60.00	60.87	51.47
21	6	) ( -	1	1	20.00	28.26	27.17
22	7		1	1	50.00	47.83	37.32
23	8	/	2	1	55.00	40.22	38.36
. 4							
24	1		2	0	25.00	54.55	63.69
25	2		1	1	100.00	81.82	78.25
26	3		2	0	50.00	38.64	47.17
27	4		2	2	75.00	18.18	22.23

4А, Ученик №19

Вариант 1

		( )			( )	( )	( )
1.							
. 4							
1	1		1	0	54.55	45.00	55.66
2	2		2	0	36.36	26.25	42.19
3	3		2	0	50.00	28.75	31.94

		( )			( )	( )	( )
. 4							
4	1	( )	1	1	36.36	25.00	34.14
5	2	2	2	0	40.91	28.75	32.03
6	3	( ), ( )	2	0	36.36	31.25	33.99
2.							
. 4							
7	1		1	0	50.00	31.25	40.98
8	2		2	0	55.00	39.06	41.37
9	3		2	0	30.00	31.25	29.60
10	4		1	1	100.00	100.00	94.99
11	5		1	0	20.00	6.25	17.64
. 4							
12	1		1	0	80.00	43.75	60.08
13	2		2	0	60.00	64.06	65.02
14	3		2	1	35.00	34.38	46.45
15	4		1	0	20.00	9.38	16.24
3.							
. 4							
16	1		1	0	16.67	28.26	36.91
17	2		1	0	75.00	76.09	67.51
18	3		2	0	8.33	8.70	13.19
19	4		2	1	16.67	11.96	15.96
20	5		1	1	66.67	60.87	51.47
21	6	) ( -	1	0	58.33	28.26	27.17
22	7		1	0	50.00	47.83	37.32

		( )			( )	( )	( )
23	8	/	2	0	62.50	40.22	38.36
. 4							
24	1		2	2	66.67	54.55	63.69
25	2		1	1	83.33	81.82	78.25
26	3		2	1	25.00	38.64	47.17
27	4		2	0	0.00	18.18	22.23

#### 4А, Ученик №24

#### Вариант 1

		( )			( )	( )	( )
1.							
. 4							
1	1		1	1	54.55	45.00	55.66
2	2	,	2	0	36.36	26.25	42.19
3	3		2	1	50.00	28.75	31.94
. 4							
4	1	( , )	1	1	36.36	25.00	34.14
5	2	2 ,	2	1	40.91	28.75	32.03
6	3	( ), ( )	2	1	36.36	31.25	33.99
2.							
. 4							
7	1	,	1	1	50.00	31.25	40.98
8	2	,	2	2	55.00	39.06	41.37
9	3	,	2	0	30.00	31.25	29.60
10	4	,	1	1	100.00	100.00	94.99
11	5	,	1	0	20.00	6.25	17.64

		( )			( )	( )	( )
. 4							
12	1		1	1	80.00	43.75	60.08
13	2		2	2	60.00	64.06	65.02
14	3		2	2	35.00	34.38	46.45
15	4		1	0	20.00	9.38	16.24
3.							
. 4							
16	1		1	0	16.67	28.26	36.91
17	2		1	1	75.00	76.09	67.51
18	3		2	0	8.33	8.70	13.19
19	4		2	0	16.67	11.96	15.96
20	5		1	1	66.67	60.87	51.47
21	6	) ( -	1	1	58.33	28.26	27.17
22	7		1	1	50.00	47.83	37.32
23	8	/	2	2	62.50	40.22	38.36
. 4							
24	1		2	1	66.67	54.55	63.69
25	2		1	1	83.33	81.82	78.25
26	3		2	1	25.00	38.64	47.17
27	4		2	0	0.00	18.18	22.23

4Д, Ученик №25

Вариант 1

		( )			( )	( )	( )
1.							
. 4							



		( )			( )	( )	( )
1	1		1	0	57.14	45.00	55.66
2	2		2	1	7.14	26.25	42.19
3	3		2	0	7.14	28.75	31.94
. 4							
4	1	( )	1	1	14.29	25.00	34.14
5	2	2	2	0	7.14	28.75	32.03
6	3	( ), ( )	2	0	14.29	31.25	33.99
2.							
. 4							
7	1		1	0	14.29	31.25	40.98
8	2		2	2	21.43	39.06	41.37
9	3		2	0	28.57	31.25	29.60
10	4		1	1	100.00	100.00	94.99
11	5		1	0	0.00	6.25	17.64
. 4							
12	1		1	0	14.29	43.75	60.08
13	2		2	1	57.14	64.06	65.02
14	3		2	2	21.43	34.38	46.45
15	4		1	0	0.00	9.38	16.24
3.							
. 4							
16	1		1	0	20.00	28.26	36.91
17	2		1	1	70.00	76.09	67.51
18	3		2	0	5.00	8.70	13.19
19	4		2	0	30.00	11.96	15.96
20	5		1	0	60.00	60.87	51.47

		( )			( )	( )	( )
21	6	) ( -	1	1	20.00	28.26	27.17
22	7		1	1	60.00	47.83	37.32
23	8	/	2	0	25.00	40.22	38.36
. 4							
24	1		2	2	50.00	54.55	63.69
25	2		1	0	75.00	81.82	78.25
26	3		2	2	62.50	38.64	47.17
27	4		2	0	12.50	18.18	22.23

2

#### 4А, Ученик №4

##### Вариант 2

		( )			( )	( )	( )
1.							
. 4							
1	1		1	1	16.67	28.26	36.91
2	2	,	1	1	75.00	76.09	67.51
3	3		2	1	8.33	8.70	13.19
4	4	,	2	2	16.67	11.96	15.96
5	5		1	1	66.67	60.87	51.47
6	6	) ( -	1	1	58.33	28.26	27.17
7	7		1	0	50.00	47.83	37.32
8	8	/	2	2	62.50	40.22	38.36
2.							

		( )			( )	( )	( )
. 4							
9	1		1	1	100.00	52.94	35.37
10	2		1	1	66.67	52.94	36.73
11	3		2	1	50.00	47.06	49.60
12	4	:	2	1	33.33	26.47	29.76
13	5		2	1	50.00	50.00	40.38
3.							
. 4							
14	1	( , )	1	1	36.36	25.00	34.14
15	2	2 ,	2	0	40.91	28.75	32.03
16	3	( ), ( )	2	0	36.36	31.25	33.99
. 4							
17	1		1	1	54.55	45.00	55.66
18	2	, ,	2	2	36.36	26.25	42.19
19	3		2	2	50.00	28.75	31.94
4.							
. 4 ?							
20	1		2	2	100.00	20.00	24.89
21	2		1	1	100.00	80.00	74.56
22	3		2	0	0.00	0.00	24.23
23	4	,	1	1	100.00	33.33	48.19
. 4							
24	1	,	1	1	100.00	86.67	66.45
25	2		1	1	100.00	40.00	47.80
26	3		2	0	0.00	16.67	15.98
27	4	,	1	0	0.00	33.33	25.54

## 4Д, Ученик №4

## Вариант 2

		( )			( )	( )	( )
1.							
. 4							
1	1		1	0	20.00	28.26	36.91
2	2		1	1	70.00	76.09	67.51
3	3		2	0	5.00	8.70	13.19
4	4		2	1	30.00	11.96	15.96
5	5		1	1	60.00	60.87	51.47
6	6	) ( -	1	0	20.00	28.26	27.17
7	7		1	0	60.00	47.83	37.32
8	8	/	2	0	25.00	40.22	38.36
2.							
. 4							
9	1		1	1	50.00	52.94	35.37
10	2		1	0	50.00	52.94	36.73
11	3		2	0	25.00	47.06	49.60
12	4	:	2	1	25.00	26.47	29.76
13	5		2	1	33.33	50.00	40.38
3.							
. 4							
14	1	( , )	1	0	14.29	25.00	34.14
15	2	2 ,	2	1	7.14	28.75	32.03
16	3	( ), ( )	2	0	14.29	31.25	33.99
. 4							
17	1		1	1	57.14	45.00	55.66

		( )			( )	( )	( )
18	2	,	2	0	7.14	26.25	42.19
19	3		2	1	7.14	28.75	31.94
4.							
. 4 ?							
20	1		2	1	33.33	20.00	24.89
21	2		1	1	66.67	80.00	74.56
22	3		2	0	0.00	0.00	24.23
23	4	,	1	1	33.33	33.33	48.19
. 4							
24	1	,	1	0	66.67	86.67	66.45
25	2		1	1	66.67	40.00	47.80
26	3		2	1	50.00	16.67	15.98
27	4	,	1	1	66.67	33.33	25.54

4В, Ученик №11

Вариант 2

		( )			( )	( )	( )
1.							
. 4							
1	1	.	1	0	40.00	28.26	36.91
2	2	,	1	1	90.00	76.09	67.51
3	3	.	2	0	25.00	8.70	13.19
4	4	,	2	0	0.00	11.96	15.96
5	5	.	1	1	60.00	60.87	51.47
6	6	) ( -	1	1	20.00	28.26	27.17
7	7	.	1	1	50.00	47.83	37.32
8	8	/	2	2	55.00	40.22	38.36

		( )			( )	( )	( )
2.							
. 4							
9	1		1	0	0.00	52.94	35.37
10	2		1	0	0.00	52.94	36.73
11	3		2	2	100.00	47.06	49.60
12	4	:	2	0	0.00	26.47	29.76
13	5		2	2	100.00	50.00	40.38
3.							
. 4							
14	1	( , )	1	0	0.00	25.00	34.14
15	2	2 ,	2	0	33.33	28.75	32.03
16	3	( ), ( )	2	0	38.89	31.25	33.99
. 4							
17	1		1	0	33.33	45.00	55.66
18	2	, ,	2	1	27.78	26.25	42.19
19	3		2	1	38.89	28.75	31.94
4.							
. 4 ?							
20	1		2	0	7.14	20.00	24.89
21	2		1	1	71.43	80.00	74.56
22	3		2	0	0.00	0.00	24.23
23	4	,	1	1	42.86	33.33	48.19
. 4							
24	1	,	1	0	85.71	86.67	66.45
25	2		1	0	28.57	40.00	47.80

		( )			( )	( )	( )
26	3		2	0	14.29	16.67	15.98
27	4		1	0	28.57	33.33	25.54

4Б, Ученик №12

Вариант 2

		( )			( )	( )	( )
1.							
. 4							
1	1		1	1	40.00	28.26	36.91
2	2		1	1	60.00	76.09	67.51
3	3		2	0	0.00	8.70	13.19
4	4		2	0	0.00	11.96	15.96
5	5		1	1	60.00	60.87	51.47
6	6	) ( -	1	0	0.00	28.26	27.17
7	7		1	0	20.00	47.83	37.32
8	8	/	2	1	20.00	40.22	38.36
2.							
. 4							
9	1		1	0	25.00	52.94	35.37
10	2		1	1	75.00	52.94	36.73
11	3		2	1	62.50	47.06	49.60
12	4	:	2	1	12.50	26.47	29.76
13	5		2	1	50.00	50.00	40.38
3.							
. 4							
14	1	( , )	1	1	40.00	25.00	34.14
15	2	2 ,	2	1	30.00	28.75	32.03

		( )			( )	( )	( )
16	3	( ), ( )	2	0	30.00	31.25	33.99
. 4 .							
17	1		1	0	20.00	45.00	55.66
18	2	' ,	2	0	0.00	26.25	42.19
19	3		2	0	20.00	28.75	31.94
4.							
. 4 ?							
20	1		2	0	0.00	20.00	24.89
21	2		1	1	100.00	80.00	74.56
22	3		2	0	0.00	0.00	24.23
23	4	'	1	0	0.00	33.33	48.19
. 4 .							
24	1	'	1	1	100.00	86.67	66.45
25	2		1	0	0.00	40.00	47.80
26	3		2	0	0.00	16.67	15.98
27	4	'	1	1	100.00	33.33	25.54

4Г, Ученик №20

Вариант 2

		( )			( )	( )	( )
1.							
. 4							
1	1	.	1	1	33.33	28.26	36.91
2	2	' .	1	1	77.78	76.09	67.51
3	3	.	2	0	0.00	8.70	13.19
4	4	' .	2	0	5.56	11.96	15.96



		( )			( )	( )	( )
5	5		1	1	55.56	60.87	51.47
6	6	) ( -	1	0	22.22	28.26	27.17
7	7		1	1	44.44	47.83	37.32
8	8	/	2	0	22.22	40.22	38.36
2.							
. 4							
9	1		1	1	66.67	52.94	35.37
10	2		1	0	33.33	52.94	36.73
11	3		2	1	50.00	47.06	49.60
12	4	:	2	1	50.00	26.47	29.76
13	5		2	2	66.67	50.00	40.38
3.							
. 4							
14	1	( , )	1	1	37.50	25.00	34.14
15	2	2 ,	2	0	25.00	28.75	32.03
16	3	( ), ( )	2	0	31.25	31.25	33.99
. 4							
17	1		1	1	50.00	45.00	55.66
18	2	, ,	2	1	43.75	26.25	42.19
19	3		2	1	12.50	28.75	31.94
4.							
. 4 ?							
20	1		2	0	16.67	20.00	24.89
21	2		1	1	100.00	80.00	74.56
22	3		2	0	0.00	0.00	24.23

		( )			( )	( )	( )
23	4	'	1	0	0.00	33.33	48.19
. 4 .							
24	1	'	1	1	100.00	86.67	66.45
25	2		1	1	33.33	40.00	47.80
26	3		2	0	0.00	16.67	15.98
27	4	'	1	0	0.00	33.33	25.54

3

#### 4А, Ученик №1

##### Вариант 3

		( )			( )	( )	( )
1.							
. 4 .							
1	1	'	2	2	54.17	35.19	41.85
2	2	2	2	2	62.50	54.63	68.05
3	3	'	1	1	83.33	37.04	41.70
. 4 .							
4	1	'	1	1	83.33	40.74	53.57
5	2		2	2	20.83	7.41	12.51
6	3		2	2	29.17	31.48	36.43
2.							
. 4 .							
7	1	'	1	0	50.00	31.25	40.98
8	2	'	2	2	55.00	39.06	41.37
9	3	'	2	1	30.00	31.25	29.60

		( )			( )	( )	( )
10	4		1	1	100.00	100.00	94.99
11	5		1	0	20.00	6.25	17.64
. 4							
12	1		1	1	80.00	43.75	60.08
13	2		2	2	60.00	64.06	65.02
14	3		2	1	35.00	34.38	46.45
15	4		1	0	20.00	9.38	16.24
3.							
. 4							
16	1	« »	2	2	50.00	45.45	44.13
17	2	« »	4	2	33.33	28.03	26.03
18	3	« »	2	0	27.78	24.24	24.69
4.							
. 4							
19	1		1	0	16.67	28.26	36.91
20	2		1	1	75.00	76.09	67.51
21	3		2	0	8.33	8.70	13.19
22	4		2	0	16.67	11.96	15.96
23	5		1	0	66.67	60.87	51.47
24	6	) ( -	1	0	58.33	28.26	27.17
25	7		1	0	50.00	47.83	37.32
26	8	/	2	2	62.50	40.22	38.36

4В, Ученик №3

Вариант 3

		( )			( )	( )	( )
1.							

		( )			( )	( )	( )
. 4							
1	1		2	0	25.00	35.19	41.85
2	2	2	2	1	65.00	54.63	68.05
3	3		1	0	20.00	37.04	41.70
. 4							
4	1		1	0	30.00	40.74	53.57
5	2		2	0	0.00	7.41	12.51
6	3		2	2	70.00	31.48	36.43
2.							
. 4							
7	1		1	0	25.00	31.25	40.98
8	2		2	0	18.75	39.06	41.37
9	3		2	1	37.50	31.25	29.60
10	4		1	1	100.00	100.00	94.99
11	5		1	0	0.00	6.25	17.64
. 4							
12	1		1	1	50.00	43.75	60.08
13	2		2	1	68.75	64.06	65.02
14	3		2	1	43.75	34.38	46.45
15	4		1	0	0.00	9.38	16.24
3.							
. 4							
16	1	« »	2	0	44.44	45.45	44.13
17	2	« »	4	0	22.22	28.03	26.03
18	3	« »	2	1	33.33	24.24	24.69

		( )			( )	( )	( )
4.							
. 4							
19	1		1	0	40.00	28.26	36.91
20	2		1	1	90.00	76.09	67.51
21	3		2	2	25.00	8.70	13.19
22	4		2	0	0.00	11.96	15.96
23	5		1	0	60.00	60.87	51.47
24	6	) ( -	1	0	20.00	28.26	27.17
25	7		1	0	50.00	47.83	37.32
26	8	/	2	2	55.00	40.22	38.36

4Б, Ученик №5

Вариант 3

		( )			( )	( )	( )
1.							
. 4							
1	1		2	2	31.82	35.19	41.85
2	2	2	2	1	50.00	54.63	68.05
3	3		1	0	27.27	37.04	41.70
. 4							
4	1		1	0	45.45	40.74	53.57
5	2		2	0	4.55	7.41	12.51
6	3		2	0	31.82	31.48	36.43
2.							
. 4							
7	1		1	0	33.33	31.25	40.98

		( )			( )	( )	( )
8	2		2	2	66.67	39.06	41.37
9	3		2	1	33.33	31.25	29.60
10	4		1	1	100.00	100.00	94.99
11	5		1	0	0.00	6.25	17.64
. 4							
12	1		1	0	0.00	43.75	60.08
13	2		2	1	66.67	64.06	65.02
14	3		2	0	50.00	34.38	46.45
15	4		1	1	33.33	9.38	16.24
3.							
. 4							
16	1	« »	2	1	57.14	45.45	44.13
17	2	« »	4	0	32.14	28.03	26.03
18	3	« »	2	1	14.29	24.24	24.69
4.							
. 4							
19	1		1	0	40.00	28.26	36.91
20	2		1	0	60.00	76.09	67.51
21	3		2	0	0.00	8.70	13.19
22	4		2	0	0.00	11.96	15.96
23	5		1	0	60.00	60.87	51.47
24	6	) ( -	1	0	0.00	28.26	27.17
25	7		1	1	20.00	47.83	37.32
26	8	/	2	0	20.00	40.22	38.36

4Д, Ученик №5

Вариант 3

		( )			( )	( )	( )
--	--	-----	--	--	-----	-----	-----

		( )			( )	( )	( )
1.							
. 4							
1	1	,	2	1	35.71	35.19	41.85
2	2	2	2	1	42.86	54.63	68.05
3	3	,	1	0	28.57	37.04	41.70
. 4							
4	1	,	1	0	21.43	40.74	53.57
5	2		2	0	3.57	7.41	12.51
6	3		2	0	10.71	31.48	36.43
2.							
. 4							
7	1	,	1	0	14.29	31.25	40.98
8	2	,	2	0	21.43	39.06	41.37
9	3	,	2	1	28.57	31.25	29.60
10	4	,	1	1	100.00	100.00	94.99
11	5	,	1	0	0.00	6.25	17.64
. 4							
12	1	,	1	0	14.29	43.75	60.08
13	2	,	2	2	57.14	64.06	65.02
14	3	,	2	0	21.43	34.38	46.45
15	4	,	1	0	0.00	9.38	16.24
3.							
. 4							
16	1	« »	2	2	35.71	45.45	44.13
17	2	« »	4	1	25.00	28.03	26.03

		( )			( )	( )	( )
18	3	« »	2	2	21.43	24.24	24.69
4.							
. 4							
19	1	.	1	0	20.00	28.26	36.91
20	2	,	1	1	70.00	76.09	67.51
21	3	.	2	0	5.00	8.70	13.19
22	4	,	2	0	30.00	11.96	15.96
23	5	.	1	1	60.00	60.87	51.47
24	6	) ( -	1	0	20.00	28.26	27.17
25	7	.	1	1	60.00	47.83	37.32
26	8	/	2	0	25.00	40.22	38.36

4Д, Ученик №6

Вариант 3

		( )			( )	( )	( )
1.							
. 4							
1	1	,	2	0	35.71	35.19	41.85
2	2	2	2	1	42.86	54.63	68.05
3	3	,	1	0	28.57	37.04	41.70
. 4							
4	1	,	1	0	21.43	40.74	53.57
5	2		2	0	3.57	7.41	12.51
6	3		2	0	10.71	31.48	36.43
2.							
. 4							



		( )			( )	( )	( )
7	1	'	1	0	14.29	31.25	40.98
8	2		2	0	21.43	39.06	41.37
9	3		2	1	28.57	31.25	29.60
10	4		1	1	100.00	100.00	94.99
11	5		1	0	0.00	6.25	17.64
. 4							
12	1	'	1	0	14.29	43.75	60.08
13	2		2	2	57.14	64.06	65.02
14	3		2	1	21.43	34.38	46.45
15	4		1	0	0.00	9.38	16.24
3.							
. 4							
16	1	« »	2	0	35.71	45.45	44.13
17	2	« ' »	4	2	25.00	28.03	26.03
18	3	- ' »	2	0	21.43	24.24	24.69
4.							
. 4							
19	1		1	0	20.00	28.26	36.91
20	2	,	1	1	70.00	76.09	67.51
21	3		2	0	5.00	8.70	13.19
22	4	,	2	1	30.00	11.96	15.96
23	5		1	1	60.00	60.87	51.47
24	6	) ( -	1	0	20.00	28.26	27.17
25	7		1	0	60.00	47.83	37.32
26	8	/	2	1	25.00	40.22	38.36

4Д, Ученик №9

Вариант 3

		( )			( )	( )	( )
1.							
. 4							
1	1	,	2	0	35.71	35.19	41.85
2	2	2	2	1	42.86	54.63	68.05
3	3	,	1	0	28.57	37.04	41.70
. 4							
4	1	,	1	0	21.43	40.74	53.57
5	2		2	0	3.57	7.41	12.51
6	3		2	0	10.71	31.48	36.43
2.							
. 4							
7	1	,	1	1	14.29	31.25	40.98
8	2	,	2	0	21.43	39.06	41.37
9	3	,	2	2	28.57	31.25	29.60
10	4	,	1	1	100.00	100.00	94.99
11	5	,	1	0	0.00	6.25	17.64
. 4							
12	1	,	1	0	14.29	43.75	60.08
13	2	,	2	2	57.14	64.06	65.02
14	3	,	2	0	21.43	34.38	46.45
15	4	,	1	0	0.00	9.38	16.24
3.							
. 4							
16	1	« »	2	1	35.71	45.45	44.13
17	2	« »	4	2	25.00	28.03	26.03

		( )			( )	( )	( )
18	3	« »	2	0	21.43	24.24	24.69
4.							
. 4							
19	1	.	1	0	20.00	28.26	36.91
20	2	,	1	1	70.00	76.09	67.51
21	3	.	2	0	5.00	8.70	13.19
22	4	,	2	2	30.00	11.96	15.96
23	5	.	1	1	60.00	60.87	51.47
24	6	) ( -	1	0	20.00	28.26	27.17
25	7	.	1	1	60.00	47.83	37.32
26	8	/	2	2	25.00	40.22	38.36

4А, Ученик №9

Вариант 3

		( )			( )	( )	( )
1.							
. 4							
1	1	,	2	0	54.17	35.19	41.85
2	2	2	2	2	62.50	54.63	68.05
3	3	,	1	1	83.33	37.04	41.70
. 4							
4	1	,	1	1	83.33	40.74	53.57
5	2		2	0	20.83	7.41	12.51
6	3		2	1	29.17	31.48	36.43
2.							
. 4							

		( )			( )	( )	( )
7	1	'	1	1	50.00	31.25	40.98
8	2		2	1	55.00	39.06	41.37
9	3		2	1	30.00	31.25	29.60
10	4		1	1	100.00	100.00	94.99
11	5		1	0	20.00	6.25	17.64
. 4							
12	1	'	1	1	80.00	43.75	60.08
13	2		2	1	60.00	64.06	65.02
14	3		2	1	35.00	34.38	46.45
15	4		1	0	20.00	9.38	16.24
3.							
. 4							
16	1	« »	2	2	50.00	45.45	44.13
17	2	« ' »	4	1	33.33	28.03	26.03
18	3	- ' »	2	0	27.78	24.24	24.69
4.							
. 4							
19	1		1	0	16.67	28.26	36.91
20	2	,	1	1	75.00	76.09	67.51
21	3		2	0	8.33	8.70	13.19
22	4	,	2	0	16.67	11.96	15.96
23	5		1	1	66.67	60.87	51.47
24	6	) ( -	1	1	58.33	28.26	27.17
25	7		1	1	50.00	47.83	37.32
26	8	/	2	2	62.50	40.22	38.36

4В, Ученик №13

Вариант 3

		( )			( )	( )	( )
1.							
. 4							
1	1	,	2	1	25.00	35.19	41.85
2	2	2	2	1	65.00	54.63	68.05
3	3	,	1	1	20.00	37.04	41.70
. 4							
4	1	,	1	0	30.00	40.74	53.57
5	2		2	0	0.00	7.41	12.51
6	3		2	2	70.00	31.48	36.43
2.							
. 4							
7	1	,	1	0	25.00	31.25	40.98
8	2	,	2	2	18.75	39.06	41.37
9	3	,	2	1	37.50	31.25	29.60
10	4	,	1	1	100.00	100.00	94.99
11	5	,	1	0	0.00	6.25	17.64
. 4							
12	1	,	1	1	50.00	43.75	60.08
13	2	,	2	2	68.75	64.06	65.02
14	3	,	2	1	43.75	34.38	46.45
15	4	,	1	0	0.00	9.38	16.24
3.							
. 4							
16	1	« »	2	0	44.44	45.45	44.13
17	2	« »	4	0	22.22	28.03	26.03

		( )			( )	( )	( )
18	3	« »	2	0	33.33	24.24	24.69
4.							
. 4							
19	1	.	1	1	40.00	28.26	36.91
20	2	,	1	1	90.00	76.09	67.51
21	3	.	2	1	25.00	8.70	13.19
22	4	,	2	0	0.00	11.96	15.96
23	5	.	1	1	60.00	60.87	51.47
24	6	) ( -	1	0	20.00	28.26	27.17
25	7	.	1	1	50.00	47.83	37.32
26	8	/	2	2	55.00	40.22	38.36

#### 4Д, Ученик №13

#### Вариант 3

		( )			( )	( )	( )
1.							
. 4							
1	1	,	2	0	35.71	35.19	41.85
2	2	2	2	2	42.86	54.63	68.05
3	3	,	1	0	28.57	37.04	41.70
. 4							
4	1	,	1	0	21.43	40.74	53.57
5	2		2	0	3.57	7.41	12.51
6	3		2	0	10.71	31.48	36.43
2.							
. 4							

		( )			( )	( )	( )
7	1	'	1	0	14.29	31.25	40.98
8	2		2	0	21.43	39.06	41.37
9	3		2	0	28.57	31.25	29.60
10	4		1	1	100.00	100.00	94.99
11	5		1	0	0.00	6.25	17.64
. 4							
12	1	'	1	0	14.29	43.75	60.08
13	2		2	0	57.14	64.06	65.02
14	3		2	0	21.43	34.38	46.45
15	4		1	0	0.00	9.38	16.24
3.							
. 4							
16	1	« »	2	0	35.71	45.45	44.13
17	2	« »	4	0	25.00	28.03	26.03
18	3	« »	2	0	21.43	24.24	24.69
4.							
. 4							
19	1		1	0	20.00	28.26	36.91
20	2		1	0	70.00	76.09	67.51
21	3		2	0	5.00	8.70	13.19
22	4		2	0	30.00	11.96	15.96
23	5		1	0	60.00	60.87	51.47
24	6	) ( -	1	0	20.00	28.26	27.17
25	7		1	0	60.00	47.83	37.32
26	8	/	2	0	25.00	40.22	38.36

4В, Ученик №14

Вариант 3

		( )			( )	( )	( )
1.							
. 4							
1	1	,	2	2	25.00	35.19	41.85
2	2	2	2	2	65.00	54.63	68.05
3	3	,	1	1	20.00	37.04	41.70
. 4							
4	1	,	1	0	30.00	40.74	53.57
5	2		2	0	0.00	7.41	12.51
6	3		2	2	70.00	31.48	36.43
2.							
. 4							
7	1	,	1	1	25.00	31.25	40.98
8	2	,	2	0	18.75	39.06	41.37
9	3	,	2	1	37.50	31.25	29.60
10	4	,	1	1	100.00	100.00	94.99
11	5	,	1	0	0.00	6.25	17.64
. 4							
12	1	,	1	0	50.00	43.75	60.08
13	2	,	2	2	68.75	64.06	65.02
14	3	,	2	0	43.75	34.38	46.45
15	4	,	1	0	0.00	9.38	16.24
3.							
. 4							
16	1	« »	2	2	44.44	45.45	44.13
17	2	« »	4	4	22.22	28.03	26.03



		( )			( )	( )	( )
18	3	« »	2	0	33.33	24.24	24.69
4.							
. 4							
19	1	.	1	1	40.00	28.26	36.91
20	2	,	1	1	90.00	76.09	67.51
21	3	.	2	0	25.00	8.70	13.19
22	4	,	2	0	0.00	11.96	15.96
23	5	.	1	1	60.00	60.87	51.47
24	6	) ( -	1	0	20.00	28.26	27.17
25	7	.	1	0	50.00	47.83	37.32
26	8	/	2	1	55.00	40.22	38.36

4А, Ученик №14

Вариант 3

		( )			( )	( )	( )
1.							
. 4							
1	1	,	2	0	54.17	35.19	41.85
2	2	2	2	1	62.50	54.63	68.05
3	3	,	1	1	83.33	37.04	41.70
. 4							
4	1	,	1	1	83.33	40.74	53.57
5	2		2	0	20.83	7.41	12.51
6	3		2	0	29.17	31.48	36.43
2.							
. 4							

		( )			( )	( )	( )
7	1	'	1	0	50.00	31.25	40.98
8	2		2	2	55.00	39.06	41.37
9	3		2	1	30.00	31.25	29.60
10	4		1	1	100.00	100.00	94.99
11	5		1	0	20.00	6.25	17.64
. 4							
12	1	'	1	1	80.00	43.75	60.08
13	2		2	0	60.00	64.06	65.02
14	3		2	0	35.00	34.38	46.45
15	4		1	0	20.00	9.38	16.24
3.							
. 4							
16	1	« »	2	0	50.00	45.45	44.13
17	2	« ' »	4	1	33.33	28.03	26.03
18	3	- ' »	2	1	27.78	24.24	24.69
4.							
. 4							
19	1		1	0	16.67	28.26	36.91
20	2	,	1	0	75.00	76.09	67.51
21	3		2	0	8.33	8.70	13.19
22	4	,	2	0	16.67	11.96	15.96
23	5		1	1	66.67	60.87	51.47
24	6	) ( -	1	0	58.33	28.26	27.17
25	7		1	1	50.00	47.83	37.32
26	8	/	2	2	62.50	40.22	38.36

4Б, Ученик №15

Вариант 3

		( )			( )	( )	( )
1.							
. 4							
1	1	,	2	2	31.82	35.19	41.85
2	2	2	2	1	50.00	54.63	68.05
3	3	,	1	0	27.27	37.04	41.70
. 4							
4	1	,	1	1	45.45	40.74	53.57
5	2		2	0	4.55	7.41	12.51
6	3		2	1	31.82	31.48	36.43
2.							
. 4							
7	1	,	1	1	33.33	31.25	40.98
8	2	,	2	2	66.67	39.06	41.37
9	3	,	2	1	33.33	31.25	29.60
10	4	,	1	1	100.00	100.00	94.99
11	5	,	1	0	0.00	6.25	17.64
. 4							
12	1	,	1	0	0.00	43.75	60.08
13	2	,	2	2	66.67	64.06	65.02
14	3	,	2	2	50.00	34.38	46.45
15	4	,	1	0	33.33	9.38	16.24
3.							
. 4							
16	1	« »	2	2	57.14	45.45	44.13
17	2	« »	4	4	32.14	28.03	26.03

		( )			( )	( )	( )
18	3	« »	2	0	14.29	24.24	24.69
4.							
. 4							
19	1	.	1	1	40.00	28.26	36.91
20	2	,	1	1	60.00	76.09	67.51
21	3	.	2	0	0.00	8.70	13.19
22	4	,	2	0	0.00	11.96	15.96
23	5	.	1	1	60.00	60.87	51.47
24	6	) ( -	1	0	0.00	28.26	27.17
25	7	.	1	0	20.00	47.83	37.32
26	8	/	2	1	20.00	40.22	38.36

4В, Ученик №15

Вариант 3

		( )			( )	( )	( )
1.							
. 4							
1	1	,	2	0	25.00	35.19	41.85
2	2	2	2	1	65.00	54.63	68.05
3	3	,	1	0	20.00	37.04	41.70
. 4							
4	1	,	1	0	30.00	40.74	53.57
5	2		2	0	0.00	7.41	12.51
6	3		2	0	70.00	31.48	36.43
2.							
. 4							

		( )			( )	( )	( )
7	1	'	1	0	25.00	31.25	40.98
8	2		2	0	18.75	39.06	41.37
9	3		2	1	37.50	31.25	29.60
10	4		1	1	100.00	100.00	94.99
11	5		1	0	0.00	6.25	17.64
. 4							
12	1	'	1	0	50.00	43.75	60.08
13	2	'	2	1	68.75	64.06	65.02
14	3	'	2	0	43.75	34.38	46.45
15	4	'	1	0	0.00	9.38	16.24
3.							
. 4							
16	1	« »	2	0	44.44	45.45	44.13
17	2	« »	4	1	22.22	28.03	26.03
18	3	« »	2	1	33.33	24.24	24.69
4.							
. 4							
19	1		1	0	40.00	28.26	36.91
20	2	,	1	1	90.00	76.09	67.51
21	3		2	0	25.00	8.70	13.19
22	4	,	2	0	0.00	11.96	15.96
23	5		1	1	60.00	60.87	51.47
24	6	) ( -	1	0	20.00	28.26	27.17
25	7		1	0	50.00	47.83	37.32
26	8	/	2	0	55.00	40.22	38.36

4А, Ученик №15

Вариант 3

		( )			( )	( )	( )
1.							
. 4							
1	1	,	2	2	54.17	35.19	41.85
2	2	2	2	1	62.50	54.63	68.05
3	3	,	1	1	83.33	37.04	41.70
. 4							
4	1	,	1	1	83.33	40.74	53.57
5	2		2	1	20.83	7.41	12.51
6	3		2	1	29.17	31.48	36.43
2.							
. 4							
7	1	,	1	0	50.00	31.25	40.98
8	2	,	2	0	55.00	39.06	41.37
9	3	,	2	1	30.00	31.25	29.60
10	4	,	1	1	100.00	100.00	94.99
11	5	,	1	1	20.00	6.25	17.64
. 4							
12	1	,	1	1	80.00	43.75	60.08
13	2	,	2	1	60.00	64.06	65.02
14	3	,	2	2	35.00	34.38	46.45
15	4	,	1	1	20.00	9.38	16.24
3.							
. 4							
16	1	« »	2	1	50.00	45.45	44.13
17	2	« »	4	3	33.33	28.03	26.03

		( )			( )	( )	( )
18	3	« »	2	1	27.78	24.24	24.69
4.							
. 4							
19	1	.	1	1	16.67	28.26	36.91
20	2	,	1	1	75.00	76.09	67.51
21	3	.	2	0	8.33	8.70	13.19
22	4	,	2	0	16.67	11.96	15.96
23	5	.	1	1	66.67	60.87	51.47
24	6	) ( -	1	1	58.33	28.26	27.17
25	7	.	1	1	50.00	47.83	37.32
26	8	/	2	1	62.50	40.22	38.36

4В, Ученик №17

Вариант 3

		( )			( )	( )	( )
1.							
. 4							
1	1	,	2	2	25.00	35.19	41.85
2	2	2	2	1	65.00	54.63	68.05
3	3	,	1	0	20.00	37.04	41.70
. 4							
4	1	,	1	0	30.00	40.74	53.57
5	2		2	0	0.00	7.41	12.51
6	3		2	2	70.00	31.48	36.43
2.							
. 4							

		( )			( )	( )	( )
7	1	'	1	0	25.00	31.25	40.98
8	2		2	0	18.75	39.06	41.37
9	3	'	2	0	37.50	31.25	29.60
10	4	'	1	1	100.00	100.00	94.99
11	5	'	1	0	0.00	6.25	17.64
. 4							
12	1	'	1	0	50.00	43.75	60.08
13	2	'	2	1	68.75	64.06	65.02
14	3	'	2	0	43.75	34.38	46.45
15	4	'	1	0	0.00	9.38	16.24
3.							
. 4							
16	1	« »	2	2	44.44	45.45	44.13
17	2	« »	4	0	22.22	28.03	26.03
18	3	« »	2	0	33.33	24.24	24.69
4.							
. 4							
19	1		1	0	40.00	28.26	36.91
20	2	,	1	1	90.00	76.09	67.51
21	3		2	0	25.00	8.70	13.19
22	4	,	2	0	0.00	11.96	15.96
23	5		1	0	60.00	60.87	51.47
24	6	) ( -	1	0	20.00	28.26	27.17
25	7		1	0	50.00	47.83	37.32
26	8	/	2	0	55.00	40.22	38.36

4А, Ученик №20

Вариант 3



		( )			( )	( )	( )
1.							
. 4							
1	1	,	2	0	54.17	35.19	41.85
2	2	2	2	1	62.50	54.63	68.05
3	3	,	1	1	83.33	37.04	41.70
. 4							
4	1	,	1	1	83.33	40.74	53.57
5	2		2	0	20.83	7.41	12.51
6	3		2	0	29.17	31.48	36.43
2.							
. 4							
7	1	,	1	0	50.00	31.25	40.98
8	2	,	2	0	55.00	39.06	41.37
9	3	,	2	0	30.00	31.25	29.60
10	4	,	1	1	100.00	100.00	94.99
11	5	,	1	0	20.00	6.25	17.64
. 4							
12	1	,	1	0	80.00	43.75	60.08
13	2	,	2	2	60.00	64.06	65.02
14	3	,	2	0	35.00	34.38	46.45
15	4	,	1	0	20.00	9.38	16.24
3.							
. 4							
16	1	« »	2	0	50.00	45.45	44.13
17	2	« »	4	1	33.33	28.03	26.03

		( )			( )	( )	( )
18	3	« »	2	0	27.78	24.24	24.69
4.							
. 4							
19	1	.	1	0	16.67	28.26	36.91
20	2	,	1	1	75.00	76.09	67.51
21	3	.	2	0	8.33	8.70	13.19
22	4	,	2	0	16.67	11.96	15.96
23	5	.	1	1	66.67	60.87	51.47
24	6	) ( -	1	1	58.33	28.26	27.17
25	7	.	1	1	50.00	47.83	37.32
26	8	/	2	1	62.50	40.22	38.36

4В, Ученик №20

Вариант 3

		( )			( )	( )	( )
1.							
. 4							
1	1	,	2	0	25.00	35.19	41.85
2	2	2	2	2	65.00	54.63	68.05
3	3	,	1	0	20.00	37.04	41.70
. 4							
4	1	,	1	1	30.00	40.74	53.57
5	2		2	0	0.00	7.41	12.51
6	3		2	2	70.00	31.48	36.43
2.							
. 4							

		( )			( )	( )	( )
7	1	'	1	0	25.00	31.25	40.98
8	2		2	0	18.75	39.06	41.37
9	3	'	2	0	37.50	31.25	29.60
10	4	'	1	1	100.00	100.00	94.99
11	5	'	1	0	0.00	6.25	17.64
. 4							
12	1	'	1	1	50.00	43.75	60.08
13	2	'	2	1	68.75	64.06	65.02
14	3	'	2	2	43.75	34.38	46.45
15	4	'	1	0	0.00	9.38	16.24
3.							
. 4							
16	1	« »	2	0	44.44	45.45	44.13
17	2	« »	4	1	22.22	28.03	26.03
18	3	« »	2	2	33.33	24.24	24.69
4.							
. 4							
19	1		1	0	40.00	28.26	36.91
20	2	,	1	0	90.00	76.09	67.51
21	3		2	0	25.00	8.70	13.19
22	4	,	2	0	0.00	11.96	15.96
23	5		1	0	60.00	60.87	51.47
24	6	) ( -	1	0	20.00	28.26	27.17
25	7		1	1	50.00	47.83	37.32
26	8	/	2	0	55.00	40.22	38.36

4В, Ученик №21

Вариант 3

		( )			( )	( )	( )
1.							
. 4							
1	1	,	2	0	25.00	35.19	41.85
2	2	2	2	2	65.00	54.63	68.05
3	3	,	1	0	20.00	37.04	41.70
. 4							
4	1	,	1	0	30.00	40.74	53.57
5	2		2	0	0.00	7.41	12.51
6	3		2	0	70.00	31.48	36.43
2.							
. 4							
7	1	,	1	0	25.00	31.25	40.98
8	2	,	2	0	18.75	39.06	41.37
9	3	,	2	1	37.50	31.25	29.60
10	4	,	1	1	100.00	100.00	94.99
11	5	,	1	0	0.00	6.25	17.64
. 4							
12	1	,	1	1	50.00	43.75	60.08
13	2	,	2	2	68.75	64.06	65.02
14	3	,	2	2	43.75	34.38	46.45
15	4	,	1	0	0.00	9.38	16.24
3.							
. 4							
16	1	« »	2	0	44.44	45.45	44.13
17	2	« »	4	0	22.22	28.03	26.03

		( )			( )	( )	( )
18	3	« »	2	0	33.33	24.24	24.69
4.							
. 4							
19	1	.	1	0	40.00	28.26	36.91
20	2	,	1	1	90.00	76.09	67.51
21	3	.	2	0	25.00	8.70	13.19
22	4	,	2	0	0.00	11.96	15.96
23	5	.	1	0	60.00	60.87	51.47
24	6	) ( -	1	0	20.00	28.26	27.17
25	7	.	1	0	50.00	47.83	37.32
26	8	/	2	1	55.00	40.22	38.36

4Д, Ученик №24

Вариант 3

		( )			( )	( )	( )
1.							
. 4							
1	1	,	2	0	35.71	35.19	41.85
2	2	2	2	0	42.86	54.63	68.05
3	3	,	1	0	28.57	37.04	41.70
. 4							
4	1	,	1	0	21.43	40.74	53.57
5	2		2	0	3.57	7.41	12.51
6	3		2	0	10.71	31.48	36.43
2.							
. 4							

		( )			( )	( )	( )
7	1	'	1	0	14.29	31.25	40.98
8	2		2	1	21.43	39.06	41.37
9	3		2	0	28.57	31.25	29.60
10	4	'	1	1	100.00	100.00	94.99
11	5	'	1	0	0.00	6.25	17.64
. 4							
12	1	'	1	0	14.29	43.75	60.08
13	2	'	2	0	57.14	64.06	65.02
14	3	'	2	0	21.43	34.38	46.45
15	4	'	1	0	0.00	9.38	16.24
3.							
. 4							
16	1	« »	2	1	35.71	45.45	44.13
17	2	« »	4	1	25.00	28.03	26.03
18	3	« »	2	1	21.43	24.24	24.69
4.							
. 4							
19	1		1	0	20.00	28.26	36.91
20	2	,	1	0	70.00	76.09	67.51
21	3		2	0	5.00	8.70	13.19
22	4	,	2	1	30.00	11.96	15.96
23	5		1	0	60.00	60.87	51.47
24	6	) ( -	1	0	20.00	28.26	27.17
25	7		1	0	60.00	47.83	37.32
26	8	/	2	0	25.00	40.22	38.36

## 4Г, Ученик №3

## Вариант 4

		( )			( )	( )	( )
4.							
. 4							
1	1		2	1	50.00	54.55	63.69
2	2		1	0	75.00	81.82	78.25
3	3		2	0	31.25	38.64	47.17
4	4		2	0	25.00	18.18	22.23
2.							
. 4							
5	1		1	0	33.33	28.26	36.91
6	2		1	1	77.78	76.09	67.51
7	3		2	0	0.00	8.70	13.19
8	4		2	0	5.56	11.96	15.96
9	5		1	0	55.56	60.87	51.47
10	6	) ( -	1	0	22.22	28.26	27.17
11	7		1	0	44.44	47.83	37.32
12	8	/	2	0	22.22	40.22	38.36
3.							
. 4							
13	1		2	0	21.43	35.19	41.85
14	2	2	2	1	57.14	54.63	68.05
15	3		1	0	14.29	37.04	41.70
. 4							

		( )			( )	( )	( )
16	1		1	0	14.29	40.74	53.57
17	2		2	0	7.14	7.41	12.51
18	3		2	0	21.43	31.48	36.43
4.							
. 4 .							
19	1		1	0	20.00	4.35	17.07
20	2		2	1	50.00	47.83	53.85
21	3		2	0	20.00	47.83	33.79
22	4		1	0	40.00	52.17	43.85
23	5		2	1	60.00	52.17	57.80
. 4 .							
24	1		1	0	0.00	21.74	29.77
25	2		1	0	20.00	21.74	36.67
26	3		2	1	40.00	60.87	53.45
27	4		2	0	40.00	56.52	53.75

4В, Ученик №4

Вариант 4

		( )			( )	( )	( )
4.							
. 4 .							
1	1		2	1	25.00	54.55	63.69
2	2		1	1	100.00	81.82	78.25
3	3		2	2	50.00	38.64	47.17
4	4		2	1	75.00	18.18	22.23
2.							
. 4 .							



		( )			( )	( )	( )
. 4							
5	1		1	1	40.00	28.26	36.91
6	2		1	1	90.00	76.09	67.51
7	3		2	1	25.00	8.70	13.19
8	4		2	0	0.00	11.96	15.96
9	5		1	1	60.00	60.87	51.47
10	6	) ( -	1	0	20.00	28.26	27.17
11	7		1	1	50.00	47.83	37.32
12	8	/	2	2	55.00	40.22	38.36
3.							
. 4							
13	1		2	0	25.00	35.19	41.85
14	2	2	2	2	65.00	54.63	68.05
15	3		1	0	20.00	37.04	41.70
. 4							
16	1		1	1	30.00	40.74	53.57
17	2		2	0	0.00	7.41	12.51
18	3		2	2	70.00	31.48	36.43
4.							
. 4							
19	1		1	0	0.00	4.35	17.07
20	2		2	1	50.00	47.83	53.85
21	3		2	2	33.33	47.83	33.79
22	4		1	1	66.67	52.17	43.85
23	5		2	1	50.00	52.17	57.80

		( )			( )	( )	( )
. 4							
24	1		1	0	0.00	21.74	29.77
25	2		1	0	0.00	21.74	36.67
26	3		2	2	83.33	60.87	53.45
27	4		2	2	50.00	56.52	53.75

4Г, Ученик №5

Вариант 4

		( )			( )	( )	( )
4.							
. 4							
1	1		2	1	50.00	54.55	63.69
2	2		1	1	75.00	81.82	78.25
3	3		2	1	31.25	38.64	47.17
4	4		2	1	25.00	18.18	22.23
2.							
. 4							
5	1		1	0	33.33	28.26	36.91
6	2		1	1	77.78	76.09	67.51
7	3		2	0	0.00	8.70	13.19
8	4		2	0	5.56	11.96	15.96
9	5		1	0	55.56	60.87	51.47
10	6	) ( -	1	1	22.22	28.26	27.17
11	7		1	1	44.44	47.83	37.32
12	8	/	2	1	22.22	40.22	38.36
3.							
. 4							

		( )			( )	( )	( )
13	1	,	2	1	21.43	35.19	41.85
14	2	2	2	1	57.14	54.63	68.05
15	3	,	1	1	14.29	37.04	41.70
. 4							
16	1	,	1	0	14.29	40.74	53.57
17	2		2	0	7.14	7.41	12.51
18	3		2	1	21.43	31.48	36.43
4.							
. 4							
19	1	,	1	1	20.00	4.35	17.07
20	2	,	2	1	50.00	47.83	53.85
21	3	,	2	2	20.00	47.83	33.79
22	4	,	1	1	40.00	52.17	43.85
23	5	,	2	1	60.00	52.17	57.80
. 4							
24	1	,	1	0	0.00	21.74	29.77
25	2	,	1	1	20.00	21.74	36.67
26	3	,	2	2	40.00	60.87	53.45
27	4	,	2	2	40.00	56.52	53.75

4Г, Ученик №9

Вариант 4

		( )			( )	( )	( )
4.							
. 4							
1	1		2	0	50.00	54.55	63.69

		( )			( )	( )	( )
1	1		2	0	50.00	54.55	63.69
2	2		1	1	75.00	81.82	78.25
3	3		2	1	31.25	38.64	47.17
4	4		2	2	25.00	18.18	22.23
2.							
. 4							
5	1		1	0	33.33	28.26	36.91
6	2		1	1	77.78	76.09	67.51
7	3		2	0	0.00	8.70	13.19
8	4		2	0	5.56	11.96	15.96
9	5		1	1	55.56	60.87	51.47
10	6	) ( -	1	0	22.22	28.26	27.17
11	7		1	0	44.44	47.83	37.32
12	8	/	2	0	22.22	40.22	38.36
3.							
. 4							
13	1		2	1	21.43	35.19	41.85
14	2	2	2	2	57.14	54.63	68.05
15	3		1	0	14.29	37.04	41.70
. 4							
16	1		1	0	14.29	40.74	53.57
17	2		2	0	7.14	7.41	12.51
18	3		2	0	21.43	31.48	36.43
4.							
. 4							
19	1		1	0	20.00	4.35	17.07

		( )			( )	( )	( )
20	2		2	1	50.00	47.83	53.85
21	3		2	0	20.00	47.83	33.79
22	4		1	1	40.00	52.17	43.85
23	5		2	1	60.00	52.17	57.80
. 4							
24	1		1	0	0.00	21.74	29.77
25	2		1	0	20.00	21.74	36.67
26	3		2	1	40.00	60.87	53.45
27	4		2	1	40.00	56.52	53.75

4Б, Ученик №10

Вариант 4

		( )			( )	( )	( )
4.							
. 4							
1	1		2	2	75.00	54.55	63.69
2	2		1	1	100.00	81.82	78.25
3	3		2	1	50.00	38.64	47.17
4	4		2	0	0.00	18.18	22.23
2.							
. 4							
5	1		1	0	40.00	28.26	36.91
6	2		1	1	60.00	76.09	67.51
7	3		2	0	0.00	8.70	13.19
8	4		2	0	0.00	11.96	15.96
9	5		1	1	60.00	60.87	51.47
10	6	( -	1	0	0.00	28.26	27.17

		( )			( )	( )	( )
10	6	)	1	0	0.00	28.26	27.17
11	7		1	0	20.00	47.83	37.32
12	8	/	2	0	20.00	40.22	38.36
3.							
. 4							
13	1	,	2	0	31.82	35.19	41.85
14	2	2	2	1	50.00	54.63	68.05
15	3	,	1	0	27.27	37.04	41.70
. 4							
16	1	,	1	1	45.45	40.74	53.57
17	2		2	0	4.55	7.41	12.51
18	3		2	0	31.82	31.48	36.43
4.							
. 4							
19	1	,	1	0	0.00	4.35	17.07
20	2	,	2	1	41.67	47.83	53.85
21	3	,	2	1	50.00	47.83	33.79
22	4	,	1	0	33.33	52.17	43.85
23	5	,	2	1	50.00	52.17	57.80
. 4							
24	1	,	1	0	16.67	21.74	29.77
25	2	,	1	1	33.33	21.74	36.67
26	3	,	2	2	41.67	60.87	53.45
27	4	,	2	2	58.33	56.52	53.75

4Г, Ученик №10

# Вариант 4

		( )			( )	( )	( )
4.							
. 4							
1	1		2	1	50.00	54.55	63.69
2	2		1	1	75.00	81.82	78.25
3	3		2	0	31.25	38.64	47.17
4	4		2	0	25.00	18.18	22.23
2.							
. 4							
5	1		1	1	33.33	28.26	36.91
6	2		1	0	77.78	76.09	67.51
7	3		2	0	0.00	8.70	13.19
8	4		2	0	5.56	11.96	15.96
9	5		1	0	55.56	60.87	51.47
10	6	) ( -	1	0	22.22	28.26	27.17
11	7		1	0	44.44	47.83	37.32
12	8	/	2	0	22.22	40.22	38.36
3.							
. 4							
13	1		2	0	21.43	35.19	41.85
14	2	2	2	1	57.14	54.63	68.05
15	3		1	0	14.29	37.04	41.70
. 4							
16	1		1	0	14.29	40.74	53.57
17	2		2	0	7.14	7.41	12.51
18	3		2	0	21.43	31.48	36.43

		( )			( )	( )	( )
18	3		2	0	21.43	31.48	36.43
4.							
. 4							
19	1		1	0	20.00	4.35	17.07
20	2		2	1	50.00	47.83	53.85
21	3		2	0	20.00	47.83	33.79
22	4		1	0	40.00	52.17	43.85
23	5		2	2	60.00	52.17	57.80
. 4							
24	1		1	0	0.00	21.74	29.77
25	2		1	0	20.00	21.74	36.67
26	3		2	0	40.00	60.87	53.45
27	4		2	1	40.00	56.52	53.75

#### 4Д, Ученик №17

#### Вариант 4

		( )			( )	( )	( )
4.							
. 4							
1	1		2	2	50.00	54.55	63.69
2	2		1	1	75.00	81.82	78.25
3	3		2	1	62.50	38.64	47.17
4	4		2	1	12.50	18.18	22.23
2.							
. 4							
5	1		1	1	20.00	28.26	36.91
6	2		1	1	70.00	76.09	67.51



		( )			( )	( )	( )
6	2	.	1	1	70.00	76.09	67.51
7	3	.	2	0	5.00	8.70	13.19
8	4	,	2	0	30.00	11.96	15.96
9	5	.	1	1	60.00	60.87	51.47
10	6	) ( -	1	0	20.00	28.26	27.17
11	7	.	1	1	60.00	47.83	37.32
12	8	/	2	0	25.00	40.22	38.36
3.							
. 4							
13	1	,	2	2	35.71	35.19	41.85
14	2	' 2	2	1	42.86	54.63	68.05
15	3	,	1	1	28.57	37.04	41.70
. 4							
16	1	,	1	1	21.43	40.74	53.57
17	2		2	1	3.57	7.41	12.51
18	3		2	0	10.71	31.48	36.43
4.							
. 4							
19	1	,	1	0	0.00	4.35	17.07
20	2	,	2	1	50.00	47.83	53.85
21	3	,	2	2	75.00	47.83	33.79
22	4	,	1	1	50.00	52.17	43.85
23	5	,	2	2	50.00	52.17	57.80
. 4							
24	1	,	1	1	50.00	21.74	29.77

		( )			( )	( )	( )
25	2		1	0	0.00	21.74	36.67
26	3		2	1	75.00	60.87	53.45
27	4		2	2	87.50	56.52	53.75

#### 4Д, Ученик №19

#### Вариант 4

		( )			( )	( )	( )
4.							
. 4							
1	1		2	0	50.00	54.55	63.69
2	2		1	1	75.00	81.82	78.25
3	3		2	2	62.50	38.64	47.17
4	4		2	0	12.50	18.18	22.23
2.							
. 4							
5	1		1	1	20.00	28.26	36.91
6	2		1	1	70.00	76.09	67.51
7	3		2	1	5.00	8.70	13.19
8	4		2	0	30.00	11.96	15.96
9	5		1	1	60.00	60.87	51.47
10	6	) ( -	1	1	20.00	28.26	27.17
11	7		1	1	60.00	47.83	37.32
12	8	/	2	2	25.00	40.22	38.36
3.							
. 4							
13	1		2	2	35.71	35.19	41.85
14	2	2	2	1	42.86	54.63	68.05

		( )			( )	( )	( )
15	3		1	1	28.57	37.04	41.70
. 4 .							
16	1		1	0	21.43	40.74	53.57
17	2		2	0	3.57	7.41	12.51
18	3		2	2	10.71	31.48	36.43
4.							
. 4 .							
19	1		1	0	0.00	4.35	17.07
20	2		2	1	50.00	47.83	53.85
21	3		2	2	75.00	47.83	33.79
22	4		1	0	50.00	52.17	43.85
23	5		2	1	50.00	52.17	57.80
. 4 .							
24	1		1	1	50.00	21.74	29.77
25	2		1	0	0.00	21.74	36.67
26	3		2	1	75.00	60.87	53.45
27	4		2	2	87.50	56.52	53.75

4А, Ученик №21

Вариант 4

		( )			( )	( )	( )
4.							
. 4 .							
1	1		2	1	66.67	54.55	63.69
2	2		1	1	83.33	81.82	78.25
3	3		2	1	25.00	38.64	47.17

		( )			( )	( )	( )
4	4		2	0	0.00	18.18	22.23
2.							
. 4							
5	1		1	0	16.67	28.26	36.91
6	2		1	1	75.00	76.09	67.51
7	3		2	0	8.33	8.70	13.19
8	4		2	0	16.67	11.96	15.96
9	5		1	0	66.67	60.87	51.47
10	6	) ( -	1	1	58.33	28.26	27.17
11	7		1	0	50.00	47.83	37.32
12	8	/	2	0	62.50	40.22	38.36
3.							
. 4							
13	1		2	0	54.17	35.19	41.85
14	2	2	2	1	62.50	54.63	68.05
15	3		1	0	83.33	37.04	41.70
. 4							
16	1		1	0	83.33	40.74	53.57
17	2		2	0	20.83	7.41	12.51
18	3		2	0	29.17	31.48	36.43
4.							
. 4							
19	1		1	0	0.00	4.35	17.07
20	2		2	0	50.00	47.83	53.85
21	3		2	0	60.00	47.83	33.79

		( )			( )	( )	( )
22	4		1	0	80.00	52.17	43.85
23	5		2	0	50.00	52.17	57.80
. 4 .							
24	1		1	0	40.00	21.74	29.77
25	2		1	0	40.00	21.74	36.67
26	3		2	1	80.00	60.87	53.45
27	4		2	0	50.00	56.52	53.75

5

4В, Ученик №2

Вариант 5

		( )			( )	( )	( )
1.							
. 4 . ?							
1	1		2	0	7.14	20.00	24.89
2	2		1	1	71.43	80.00	74.56
3	3		2	0	0.00	0.00	24.23
4	4		1	0	42.86	33.33	48.19
. 4 .							
5	1		1	1	85.71	86.67	66.45
6	2		1	0	28.57	40.00	47.80
7	3		2	0	14.29	16.67	15.98
8	4		1	1	28.57	33.33	25.54
2.							

		( )			( )	( )	( )
. 4							
9	1	( , )	1	0	0.00	25.00	34.14
10	2	2 ,	2	0	33.33	28.75	32.03
11	3	( ), ( )	2	2	38.89	31.25	33.99
. 4							
12	1		1	0	33.33	45.00	55.66
13	2	, ,	2	1	27.78	26.25	42.19
14	3		2	0	38.89	28.75	31.94
3.							
, 4							
15	1		1	0	33.33	35.42	45.08
16	2		2	0	33.33	25.00	19.39
17	3	( , ).	1	0	11.11	12.50	9.59
18	4		2	0	27.78	36.46	30.11
19	5		1	0	33.33	35.42	37.16
20	6		2	0	5.56	9.38	15.36
21	7		2	0	11.11	16.67	11.61
4.							
. 4							
22	1		1	1	57.14	63.64	56.92
23	2	:	2	0	0.00	4.55	20.45
24	3		2	0	28.57	29.55	38.05
25	4	:	1	0	28.57	31.82	37.32
26	5		2	0	0.00	9.09	17.25

4Д, Ученик №3

Вариант 5

		( )			( )	( )	( )
1.							
. 4 ?							
1	1		2	0	33.33	20.00	24.89
2	2		1	1	66.67	80.00	74.56
3	3		2	0	0.00	0.00	24.23
4	4		1	0	33.33	33.33	48.19
. 4							
5	1		1	1	66.67	86.67	66.45
6	2		1	1	66.67	40.00	47.80
7	3		2	0	50.00	16.67	15.98
8	4		1	0	66.67	33.33	25.54
2.							
. 4							
9	1	( , )	1	0	14.29	25.00	34.14
10	2	2 ,	2	0	7.14	28.75	32.03
11	3	( ), ( )	2	0	14.29	31.25	33.99
. 4							
12	1		1	1	57.14	45.00	55.66
13	2		2	0	7.14	26.25	42.19
14	3		2	0	7.14	28.75	31.94
3.							
, 4							
15	1		1	1	45.45	35.42	45.08
16	2		2	0	27.27	25.00	19.39
17	3	( , , )	1	0	18.18	12.50	9.59

		( )			( )	( )	( )
18	4		2	0	40.91	36.46	30.11
19	5		1	1	45.45	35.42	37.16
20	6		2	1	13.64	9.38	15.36
21	7		2	0	4.55	16.67	11.61
4.							
. 4							
22	1		1	1	75.00	63.64	56.92
23	2		2	1	12.50	4.55	20.45
24	3		2	1	25.00	29.55	38.05
25	4		1	0	0.00	31.82	37.32
26	5		2	0	0.00	9.09	17.25

4В, Ученик №5

Вариант 5

		( )			( )	( )	( )
1.							
. 4 ?							
1	1		2	1	7.14	20.00	24.89
2	2		1	1	71.43	80.00	74.56
3	3		2	0	0.00	0.00	24.23
4	4		1	1	42.86	33.33	48.19
. 4							
5	1		1	1	85.71	86.67	66.45
6	2		1	0	28.57	40.00	47.80
7	3		2	0	14.29	16.67	15.98
8	4		1	0	28.57	33.33	25.54
2.							



		( )			( )	( )	( )
. 4							
9	1	( , )	1	0	0.00	25.00	34.14
10	2	2 ,	2	0	33.33	28.75	32.03
11	3	( ), ( )	2	0	38.89	31.25	33.99
. 4							
12	1		1	0	33.33	45.00	55.66
13	2	, ,	2	0	27.78	26.25	42.19
14	3		2	2	38.89	28.75	31.94
3.							
, 4							
15	1		1	1	33.33	35.42	45.08
16	2		2	2	33.33	25.00	19.39
17	3	( , ).	1	0	11.11	12.50	9.59
18	4		2	0	27.78	36.46	30.11
19	5		1	1	33.33	35.42	37.16
20	6		2	0	5.56	9.38	15.36
21	7		2	0	11.11	16.67	11.61
4.							
. 4							
22	1		1	0	57.14	63.64	56.92
23	2	:	2	0	0.00	4.55	20.45
24	3		2	0	28.57	29.55	38.05
25	4	:	1	1	28.57	31.82	37.32
26	5		2	0	0.00	9.09	17.25

4В, Ученик №6

Вариант 5

		( )			( )	( )	( )
1.							
. 4 ?							
1	1		2	0	7.14	20.00	24.89
2	2		1	0	71.43	80.00	74.56
3	3		2	0	0.00	0.00	24.23
4	4		1	0	42.86	33.33	48.19
. 4							
5	1		1	1	85.71	86.67	66.45
6	2		1	0	28.57	40.00	47.80
7	3		2	0	14.29	16.67	15.98
8	4		1	0	28.57	33.33	25.54
2.							
. 4							
9	1	( , )	1	0	0.00	25.00	34.14
10	2	2 ,	2	0	33.33	28.75	32.03
11	3	( ), ( )	2	0	38.89	31.25	33.99
. 4							
12	1		1	1	33.33	45.00	55.66
13	2	, ,	2	1	27.78	26.25	42.19
14	3		2	0	38.89	28.75	31.94
3.							
, 4							
15	1		1	0	33.33	35.42	45.08
16	2		2	0	33.33	25.00	19.39
17	3	( , , ).	1	0	11.11	12.50	9.59

		( )			( )	( )	( )
18	4		2	1	27.78	36.46	30.11
19	5		1	1	33.33	35.42	37.16
20	6		2	1	5.56	9.38	15.36
21	7		2	0	11.11	16.67	11.61
4.							
. 4							
22	1		1	1	57.14	63.64	56.92
23	2		2	0	0.00	4.55	20.45
24	3		2	2	28.57	29.55	38.05
25	4		1	1	28.57	31.82	37.32
26	5		2	0	0.00	9.09	17.25

4В, Ученик №7

Вариант 5

		( )			( )	( )	( )
1.							
. 4 ?							
1	1		2	0	7.14	20.00	24.89
2	2		1	1	71.43	80.00	74.56
3	3		2	0	0.00	0.00	24.23
4	4		1	0	42.86	33.33	48.19
. 4							
5	1		1	1	85.71	86.67	66.45
6	2		1	1	28.57	40.00	47.80
7	3		2	1	14.29	16.67	15.98
8	4		1	1	28.57	33.33	25.54
2.							

		( )			( )	( )	( )
. 4							
9	1	( , )	1	0	0.00	25.00	34.14
10	2	2 ,	2	2	33.33	28.75	32.03
11	3	( ), ( )	2	2	38.89	31.25	33.99
. 4							
12	1		1	0	33.33	45.00	55.66
13	2	, ,	2	0	27.78	26.25	42.19
14	3		2	1	38.89	28.75	31.94
3.							
, 4							
15	1		1	0	33.33	35.42	45.08
16	2		2	2	33.33	25.00	19.39
17	3	( , ).	1	0	11.11	12.50	9.59
18	4		2	0	27.78	36.46	30.11
19	5		1	1	33.33	35.42	37.16
20	6		2	0	5.56	9.38	15.36
21	7		2	1	11.11	16.67	11.61
4.							
. 4							
22	1		1	1	57.14	63.64	56.92
23	2	:	2	0	0.00	4.55	20.45
24	3		2	0	28.57	29.55	38.05
25	4	:	1	0	28.57	31.82	37.32
26	5		2	0	0.00	9.09	17.25

4В, Ученик №8

Вариант 5

		( )			( )	( )	( )
1.							
. 4 ?							
1	1		2	0	7.14	20.00	24.89
2	2		1	0	71.43	80.00	74.56
3	3		2	0	0.00	0.00	24.23
4	4		1	1	42.86	33.33	48.19
. 4							
5	1		1	1	85.71	86.67	66.45
6	2		1	0	28.57	40.00	47.80
7	3		2	0	14.29	16.67	15.98
8	4		1	0	28.57	33.33	25.54
2.							
. 4							
9	1	( , )	1	0	0.00	25.00	34.14
10	2	2 ,	2	0	33.33	28.75	32.03
11	3	( ), ( )	2	0	38.89	31.25	33.99
. 4							
12	1		1	0	33.33	45.00	55.66
13	2	, ,	2	0	27.78	26.25	42.19
14	3		2	0	38.89	28.75	31.94
3.							
, 4							
15	1		1	0	33.33	35.42	45.08
16	2		2	0	33.33	25.00	19.39
17	3	( , , ),	1	1	11.11	12.50	9.59

		( )			( )	( )	( )
18	4		2	1	27.78	36.46	30.11
19	5		1	0	33.33	35.42	37.16
20	6		2	0	5.56	9.38	15.36
21	7		2	0	11.11	16.67	11.61
4.							
. 4							
22	1		1	0	57.14	63.64	56.92
23	2		2	0	0.00	4.55	20.45
24	3		2	2	28.57	29.55	38.05
25	4		1	0	28.57	31.82	37.32
26	5		2	0	0.00	9.09	17.25

4В, Ученик №10

Вариант 5

		( )			( )	( )	( )
1.							
. 4 ?							
1	1		2	0	7.14	20.00	24.89
2	2		1	1	71.43	80.00	74.56
3	3		2	0	0.00	0.00	24.23
4	4		1	0	42.86	33.33	48.19
. 4							
5	1		1	1	85.71	86.67	66.45
6	2		1	1	28.57	40.00	47.80
7	3		2	1	14.29	16.67	15.98
8	4		1	0	28.57	33.33	25.54
2.							

		( )			( )	( )	( )
. 4							
9	1	( , )	1	0	0.00	25.00	34.14
10	2	2 ,	2	2	33.33	28.75	32.03
11	3	( ), ( )	2	2	38.89	31.25	33.99
. 4							
12	1		1	1	33.33	45.00	55.66
13	2	, ,	2	0	27.78	26.25	42.19
14	3		2	2	38.89	28.75	31.94
3.							
, 4							
15	1		1	0	33.33	35.42	45.08
16	2		2	0	33.33	25.00	19.39
17	3	( , ).	1	0	11.11	12.50	9.59
18	4		2	0	27.78	36.46	30.11
19	5		1	0	33.33	35.42	37.16
20	6		2	0	5.56	9.38	15.36
21	7		2	0	11.11	16.67	11.61
4.							
. 4							
22	1		1	0	57.14	63.64	56.92
23	2	:	2	0	0.00	4.55	20.45
24	3		2	0	28.57	29.55	38.05
25	4	:	1	0	28.57	31.82	37.32
26	5		2	0	0.00	9.09	17.25

4Г, Ученик №12

Вариант 5

		( )			( )	( )	( )
1.							
. 4 ?							
1	1		2	0	16.67	20.00	24.89
2	2		1	1	100.00	80.00	74.56
3	3		2	0	0.00	0.00	24.23
4	4		1	0	0.00	33.33	48.19
. 4							
5	1		1	1	100.00	86.67	66.45
6	2		1	0	33.33	40.00	47.80
7	3		2	0	0.00	16.67	15.98
8	4		1	0	0.00	33.33	25.54
2.							
. 4							
9	1	( , )	1	1	37.50	25.00	34.14
10	2	2 ,	2	0	25.00	28.75	32.03
11	3	( ), ( )	2	2	31.25	31.25	33.99
. 4							
12	1		1	1	50.00	45.00	55.66
13	2	, ,	2	1	43.75	26.25	42.19
14	3		2	0	12.50	28.75	31.94
3.							
, 4							
15	1		1	1	66.67	35.42	45.08
16	2		2	0	0.00	25.00	19.39
17	3	( , , ).	1	1	33.33	12.50	9.59



		( )			( )	( )	( )
18	4		2	2	33.33	36.46	30.11
19	5		1	0	16.67	35.42	37.16
20	6		2	0	0.00	9.38	15.36
21	7		2	1	25.00	16.67	11.61
4.							
. 4							
22	1		1	0	33.33	63.64	56.92
23	2		2	0	0.00	4.55	20.45
24	3		2	2	50.00	29.55	38.05
25	4		1	1	33.33	31.82	37.32
26	5		2	1	50.00	9.09	17.25

4Г, Ученик №15

Вариант 5

		( )			( )	( )	( )
1.							
. 4 ?							
1	1		2	1	16.67	20.00	24.89
2	2		1	1	100.00	80.00	74.56
3	3		2	0	0.00	0.00	24.23
4	4		1	0	0.00	33.33	48.19
. 4							
5	1		1	1	100.00	86.67	66.45
6	2		1	0	33.33	40.00	47.80
7	3		2	0	0.00	16.67	15.98
8	4		1	0	0.00	33.33	25.54
2.							

		( )			( )	( )	( )
. 4							
9	1	( , )	1	0	37.50	25.00	34.14
10	2	2 ,	2	0	25.00	28.75	32.03
11	3	( ), ( )	2	0	31.25	31.25	33.99
. 4							
12	1		1	0	50.00	45.00	55.66
13	2	, ,	2	0	43.75	26.25	42.19
14	3		2	0	12.50	28.75	31.94
3.							
, 4							
15	1		1	1	66.67	35.42	45.08
16	2		2	0	0.00	25.00	19.39
17	3	( , ).	1	1	33.33	12.50	9.59
18	4		2	2	33.33	36.46	30.11
19	5		1	0	16.67	35.42	37.16
20	6		2	0	0.00	9.38	15.36
21	7		2	0	25.00	16.67	11.61
4.							
. 4							
22	1		1	0	33.33	63.64	56.92
23	2	:	2	0	0.00	4.55	20.45
24	3		2	0	50.00	29.55	38.05
25	4	:	1	0	33.33	31.82	37.32
26	5		2	0	50.00	9.09	17.25

4Д, Ученик №21

Вариант 5

		( )			( )	( )	( )
1.							
. 4 ?							
1	1		2	1	33.33	20.00	24.89
2	2		1	0	66.67	80.00	74.56
3	3		2	0	0.00	0.00	24.23
4	4		1	0	33.33	33.33	48.19
. 4							
5	1		1	1	66.67	86.67	66.45
6	2		1	0	66.67	40.00	47.80
7	3		2	2	50.00	16.67	15.98
8	4		1	1	66.67	33.33	25.54
2.							
. 4							
9	1	( , )	1	0	14.29	25.00	34.14
10	2	2 ,	2	0	7.14	28.75	32.03
11	3	( ), ( )	2	0	14.29	31.25	33.99
. 4							
12	1		1	1	57.14	45.00	55.66
13	2		2	0	7.14	26.25	42.19
14	3		2	0	7.14	28.75	31.94
3.							
, 4							
15	1		1	0	45.45	35.42	45.08
16	2		2	0	27.27	25.00	19.39
17	3	( , , )	1	0	18.18	12.50	9.59

		( )			( )	( )	( )
18	4		2	0	40.91	36.46	30.11
19	5		1	0	45.45	35.42	37.16
20	6		2	0	13.64	9.38	15.36
21	7		2	0	4.55	16.67	11.61
4.							
. 4							
22	1		1	0	75.00	63.64	56.92
23	2		2	0	12.50	4.55	20.45
24	3		2	0	25.00	29.55	38.05
25	4		1	0	0.00	31.82	37.32
26	5		2	0	0.00	9.09	17.25

6

#### 4А, Ученик №3

##### Вариант 6

		( )			( )	( )	( )
1.							
, 4							
1	1		1	0	18.18	35.42	45.08
2	2		2	2	45.45	25.00	19.39
3	3	( ' , )	1	0	0.00	12.50	9.59
4	4		2	0	31.82	36.46	30.11
5	5		1	0	36.36	35.42	37.16
6	6		2	0	9.09	9.38	15.36
7	7		2	1	36.36	16.67	11.61

		( )			( )	( )	( )
2.							
. 4							
8	1		1	1	42.86	25.00	38.46
9	2		1	1	85.71	83.33	73.06
10	3		1	1	42.86	41.67	28.25
11	4		2	0	7.14	6.25	10.57
. 4 ?							
12	1		2	0	35.71	33.33	33.85
13	2		2	1	42.86	35.42	41.62
14	3		1	1	71.43	50.00	52.13
15	4		1	1	71.43	45.83	61.65
3.							
. 4							
16	1		1	1	80.00	63.64	56.92
17	2	:	2	0	0.00	4.55	20.45
18	3		2	1	30.00	29.55	38.05
19	4	:	1	0	40.00	31.82	37.32
20	5		2	0	0.00	9.09	17.25
4.							
. 4							
21	1	( , )	1	0	36.36	25.00	34.14
22	2	2 ,	2	2	40.91	28.75	32.03
23	3	( ), ( )	2	2	36.36	31.25	33.99
. 4							
24	1		1	1	54.55	45.00	55.66

		( )			( )	( )	( )
25	2		2	2	36.36	26.25	42.19
26	3		2	1	50.00	28.75	31.94

4Г, Ученик №4

Вариант 6

		( )			( )	( )	( )
1.							
, 4							
1	1		1	1	66.67	35.42	45.08
2	2		2	0	0.00	25.00	19.39
3	3	( )	1	0	33.33	12.50	9.59
4	4		2	0	33.33	36.46	30.11
5	5		1	0	16.67	35.42	37.16
6	6		2	0	0.00	9.38	15.36
7	7		2	1	25.00	16.67	11.61
2.							
. 4							
8	1		1	1	66.67	25.00	38.46
9	2		1	1	100.00	83.33	73.06
10	3		1	1	33.33	41.67	28.25
11	4		2	0	0.00	6.25	10.57
. 4 ?							
12	1		2	2	66.67	33.33	33.85
13	2		2	2	83.33	35.42	41.62
14	3		1	1	66.67	50.00	52.13
15	4		1	0	33.33	45.83	61.65
3.							

		( )			( )	( )	( )
. 4							
16	1		1	1	33.33	63.64	56.92
17	2	:	2	0	0.00	4.55	20.45
18	3		2	1	50.00	29.55	38.05
19	4	:	1	0	33.33	31.82	37.32
20	5		2	2	50.00	9.09	17.25
4.							
. 4							
21	1	( , )	1	1	37.50	25.00	34.14
22	2	2 ,	2	2	25.00	28.75	32.03
23	3	( ), ( )	2	0	31.25	31.25	33.99
. 4							
24	1		1	1	50.00	45.00	55.66
25	2	, ,	2	2	43.75	26.25	42.19
26	3		2	0	12.50	28.75	31.94

4Б, Ученик №7

Вариант 6

		( )			( )	( )	( )
1.							
, 4							
1	1		1	0	27.27	35.42	45.08
2	2		2	0	9.09	25.00	19.39
3	3	( , ).	1	0	9.09	12.50	9.59
4	4		2	1	45.45	36.46	30.11
5	5		1	0	36.36	35.42	37.16
6	6		2	0	13.64	9.38	15.36

		( )			( )	( )	( )
7	7		2	0	9.09	16.67	11.61
2.							
. 4							
8	1		1	0	16.67	25.00	38.46
9	2		1	1	83.33	83.33	73.06
10	3		1	1	50.00	41.67	28.25
11	4		2	0	16.67	6.25	10.57
. 4 ?							
12	1		2	0	25.00	33.33	33.85
13	2		2	0	33.33	35.42	41.62
14	3		1	0	50.00	50.00	52.13
15	4		1	0	33.33	45.83	61.65
3.							
. 4							
16	1		1	1	66.67	63.64	56.92
17	2	:	2	0	16.67	4.55	20.45
18	3		2	0	16.67	29.55	38.05
19	4	:	1	1	66.67	31.82	37.32
20	5		2	1	16.67	9.09	17.25
4.							
. 4							
21	1	( , )	1	0	40.00	25.00	34.14
22	2	2 ,	2	0	30.00	28.75	32.03
23	3	( ), ( )	2	0	30.00	31.25	33.99
. 4							



		( )			( )	( )	( )
24	1		1	0	20.00	45.00	55.66
25	2		2	0	0.00	26.25	42.19
26	3		2	0	20.00	28.75	31.94

4Д, Ученик №8

Вариант 6

		( )			( )	( )	( )
1.							
, 4							
1	1		1	0	45.45	35.42	45.08
2	2		2	2	27.27	25.00	19.39
3	3	( )	1	0	18.18	12.50	9.59
4	4		2	0	40.91	36.46	30.11
5	5		1	1	45.45	35.42	37.16
6	6		2	1	13.64	9.38	15.36
7	7		2	0	4.55	16.67	11.61
2.							
. 4							
8	1		1	0	0.00	25.00	38.46
9	2		1	1	71.43	83.33	73.06
10	3		1	0	42.86	41.67	28.25
11	4		2	0	0.00	6.25	10.57
. 4 ?							
12	1		2	0	21.43	33.33	33.85
13	2		2	0	14.29	35.42	41.62
14	3		1	0	14.29	50.00	52.13
15	4		1	1	28.57	45.83	61.65

		( )			( )	( )	( )
3.							
. 4							
16	1		1	1	75.00	63.64	56.92
17	2	:	2	0	12.50	4.55	20.45
18	3		2	0	25.00	29.55	38.05
19	4	:	1	0	0.00	31.82	37.32
20	5		2	0	0.00	9.09	17.25
4.							
. 4							
21	1	( , )	1	0	14.29	25.00	34.14
22	2	2 ,	2	0	7.14	28.75	32.03
23	3	( ), ( )	2	2	14.29	31.25	33.99
. 4							
24	1		1	0	57.14	45.00	55.66
25	2	, ,	2	0	7.14	26.25	42.19
26	3		2	0	7.14	28.75	31.94

4А, Ученик №10

Вариант 6

		( )			( )	( )	( )
1.							
, 4							
1	1		1	0	18.18	35.42	45.08
2	2		2	0	45.45	25.00	19.39
3	3	( , ).	1	0	0.00	12.50	9.59
4	4		2	0	31.82	36.46	30.11
5	5		1	0	36.36	35.42	37.16

		( )			( )	( )	( )
6	6		2	0	9.09	9.38	15.36
7	7		2	1	36.36	16.67	11.61
2.							
. 4							
8	1		1	0	42.86	25.00	38.46
9	2		1	1	85.71	83.33	73.06
10	3		1	0	42.86	41.67	28.25
11	4		2	0	7.14	6.25	10.57
. 4 ?							
12	1		2	0	35.71	33.33	33.85
13	2		2	0	42.86	35.42	41.62
14	3		1	0	71.43	50.00	52.13
15	4		1	0	71.43	45.83	61.65
3.							
. 4							
16	1		1	0	80.00	63.64	56.92
17	2	:	2	0	0.00	4.55	20.45
18	3		2	0	30.00	29.55	38.05
19	4	:	1	0	40.00	31.82	37.32
20	5		2	0	0.00	9.09	17.25
4.							
. 4							
21	1	( , )	1	0	36.36	25.00	34.14
22	2	2 ,	2	0	40.91	28.75	32.03
23	3	( ), ( )	2	0	36.36	31.25	33.99

		( )			( )	( )	( )
. 4 .							
24	1		1	0	54.55	45.00	55.66
25	2		2	0	36.36	26.25	42.19
26	3		2	1	50.00	28.75	31.94

4В, Ученик №12

Вариант 6

		( )			( )	( )	( )
1.							
. 4 .							
1	1		1	1	33.33	35.42	45.08
2	2		2	2	33.33	25.00	19.39
3	3	( ' . ) .	1	0	11.11	12.50	9.59
4	4		2	2	27.78	36.46	30.11
5	5		1	0	33.33	35.42	37.16
6	6		2	0	5.56	9.38	15.36
7	7		2	0	11.11	16.67	11.61
2.							
. 4 .							
8	1		1	0	0.00	25.00	38.46
9	2		1	1	100.00	83.33	73.06
10	3		1	0	0.00	41.67	28.25
11	4		2	0	0.00	6.25	10.57
. 4 . ?							
12	1		2	1	50.00	33.33	33.85
13	2		2	0	0.00	35.42	41.62
14	3		1	1	100.00	50.00	52.13

		( )			( )	( )	( )
15	4	,	1	1	100.00	45.83	61.65
3.							
. 4							
16	1		1	1	57.14	63.64	56.92
17	2	:	2	0	0.00	4.55	20.45
18	3		2	0	28.57	29.55	38.05
19	4	:	1	0	28.57	31.82	37.32
20	5		2	0	0.00	9.09	17.25
4.							
. 4							
21	1	( , )	1	0	0.00	25.00	34.14
22	2	2 ,	2	0	33.33	28.75	32.03
23	3	( ), ( )	2	1	38.89	31.25	33.99
. 4							
24	1		1	1	33.33	45.00	55.66
25	2	, ,	2	0	27.78	26.25	42.19
26	3		2	1	38.89	28.75	31.94

4А, Ученик №13

Вариант 6

		( )			( )	( )	( )
1.							
, 4							
1	1	.	1	0	18.18	35.42	45.08
2	2	.	2	2	45.45	25.00	19.39
3	3	( , ).	1	0	0.00	12.50	9.59
4	4	.	2	2	31.82	36.46	30.11

		( )			( )	( )	( )
5	5		1	1	36.36	35.42	37.16
6	6		2	0	9.09	9.38	15.36
7	7		2	0	36.36	16.67	11.61
2.							
. 4							
8	1		1	0	42.86	25.00	38.46
9	2		1	1	85.71	83.33	73.06
10	3		1	0	42.86	41.67	28.25
11	4		2	0	7.14	6.25	10.57
. 4 ?							
12	1		2	0	35.71	33.33	33.85
13	2		2	0	42.86	35.42	41.62
14	3		1	1	71.43	50.00	52.13
15	4		1	1	71.43	45.83	61.65
3.							
. 4							
16	1		1	1	80.00	63.64	56.92
17	2	:	2	0	0.00	4.55	20.45
18	3		2	1	30.00	29.55	38.05
19	4	:	1	0	40.00	31.82	37.32
20	5		2	0	0.00	9.09	17.25
4.							
. 4							
21	1	( , )	1	0	36.36	25.00	34.14
22	2	2 ,	2	0	40.91	28.75	32.03

		( )			( )	( )	( )
23	3	( ), ( )	2	0	36.36	31.25	33.99
. 4 .							
24	1		1	0	54.55	45.00	55.66
25	2		2	0	36.36	26.25	42.19
26	3		2	1	50.00	28.75	31.94

4Б, Ученик №17

Вариант 6

		( )			( )	( )	( )
1.							
, 4							
1	1		1	0	27.27	35.42	45.08
2	2		2	0	9.09	25.00	19.39
3	3	( ' . . ).	1	0	9.09	12.50	9.59
4	4		2	0	45.45	36.46	30.11
5	5		1	0	36.36	35.42	37.16
6	6		2	1	13.64	9.38	15.36
7	7		2	0	9.09	16.67	11.61
2.							
. 4 .							
8	1		1	0	16.67	25.00	38.46
9	2		1	1	83.33	83.33	73.06
10	3		1	1	50.00	41.67	28.25
11	4		2	0	16.67	6.25	10.57
. 4 . ?							
12	1		2	0	25.00	33.33	33.85

		( )			( )	( )	( )
13	2		2	0	33.33	35.42	41.62
14	3		1	0	50.00	50.00	52.13
15	4		1	0	33.33	45.83	61.65
3.							
. 4							
16	1		1	1	66.67	63.64	56.92
17	2	:	2	1	16.67	4.55	20.45
18	3		2	0	16.67	29.55	38.05
19	4	:	1	0	66.67	31.82	37.32
20	5		2	0	16.67	9.09	17.25
4.							
. 4							
21	1	( , )	1	1	40.00	25.00	34.14
22	2	2 ,	2	0	30.00	28.75	32.03
23	3	( ), ( )	2	1	30.00	31.25	33.99
. 4							
24	1		1	1	20.00	45.00	55.66
25	2	, ,	2	0	0.00	26.25	42.19
26	3		2	2	20.00	28.75	31.94

4Д, Ученик №18

Вариант 6

		( )			( )	( )	( )
1.							
, 4							
1	1		1	1	45.45	35.42	45.08
2	2		2	2	27.27	25.00	19.39



		( )			( )	( )	( )
3	3	( ' . ). ,	1	1	18.18	12.50	9.59
4	4		2	1	40.91	36.46	30.11
5	5		1	0	45.45	35.42	37.16
6	6		2	0	13.64	9.38	15.36
7	7		2	0	4.55	16.67	11.61
2.							
. 4							
8	1		1	0	0.00	25.00	38.46
9	2		1	1	71.43	83.33	73.06
10	3		1	1	42.86	41.67	28.25
11	4		2	0	0.00	6.25	10.57
. 4 ?							
12	1		2	0	21.43	33.33	33.85
13	2		2	0	14.29	35.42	41.62
14	3		1	0	14.29	50.00	52.13
15	4		1	0	28.57	45.83	61.65
3.							
. 4							
16	1		1	1	75.00	63.64	56.92
17	2	:	2	0	12.50	4.55	20.45
18	3		2	1	25.00	29.55	38.05
19	4	:	1	0	0.00	31.82	37.32
20	5		2	0	0.00	9.09	17.25
4.							
. 4							

		( )			( )	( )	( )
21	1	( , )	1	0	14.29	25.00	34.14
22	2	2 ,	2	0	7.14	28.75	32.03
23	3	( ), ( )	2	0	14.29	31.25	33.99
. 4 .							
24	1		1	0	57.14	45.00	55.66
25	2	, ,	2	0	7.14	26.25	42.19
26	3		2	0	7.14	28.75	31.94

4Б, Ученик №20

Вариант 6

		( )			( )	( )	( )
1.							
, 4							
1	1		1	1	27.27	35.42	45.08
2	2		2	0	9.09	25.00	19.39
3	3	( , , ). ,	1	0	9.09	12.50	9.59
4	4		2	2	45.45	36.46	30.11
5	5		1	1	36.36	35.42	37.16
6	6		2	0	13.64	9.38	15.36
7	7		2	0	9.09	16.67	11.61
2.							
. 4 .							
8	1		1	0	16.67	25.00	38.46
9	2		1	0	83.33	83.33	73.06
10	3	, ,	1	1	50.00	41.67	28.25
11	4		2	2	16.67	6.25	10.57

		( )			( )	( )	( )
. 4 ?							
12	1		2	0	25.00	33.33	33.85
13	2		2	2	33.33	35.42	41.62
14	3		1	1	50.00	50.00	52.13
15	4		1	1	33.33	45.83	61.65
3.							
. 4							
16	1		1	0	66.67	63.64	56.92
17	2	:	2	0	16.67	4.55	20.45
18	3		2	1	16.67	29.55	38.05
19	4	:	1	1	66.67	31.82	37.32
20	5		2	0	16.67	9.09	17.25
4.							
. 4							
21	1	( , )	1	0	40.00	25.00	34.14
22	2	2 ,	2	2	30.00	28.75	32.03
23	3	( ), ( )	2	0	30.00	31.25	33.99
. 4							
24	1		1	0	20.00	45.00	55.66
25	2	, ,	2	0	0.00	26.25	42.19
26	3		2	0	20.00	28.75	31.94

4А, Ученик №23

Вариант 6

		( )			( )	( )	( )
1.							

		( )			( )	( )	( )
, 4							
1	1		1	0	18.18	35.42	45.08
2	2		2	0	45.45	25.00	19.39
3	3	( ' . ).	1	0	0.00	12.50	9.59
4	4		2	1	31.82	36.46	30.11
5	5		1	1	36.36	35.42	37.16
6	6		2	0	9.09	9.38	15.36
7	7		2	1	36.36	16.67	11.61
2.							
. 4							
8	1		1	1	42.86	25.00	38.46
9	2		1	1	85.71	83.33	73.06
10	3		1	1	42.86	41.67	28.25
11	4		2	1	7.14	6.25	10.57
. 4 ?							
12	1		2	2	35.71	33.33	33.85
13	2		2	1	42.86	35.42	41.62
14	3		1	1	71.43	50.00	52.13
15	4		1	1	71.43	45.83	61.65
3.							
. 4							
16	1		1	1	80.00	63.64	56.92
17	2	:	2	0	0.00	4.55	20.45
18	3		2	0	30.00	29.55	38.05
19	4	:	1	1	40.00	31.82	37.32
20	5		2	0	0.00	9.09	17.25

		( )			( )	( )	( )
4.							
. 4							
21	1	( , )	1	0	36.36	25.00	34.14
22	2	2 ,	2	2	40.91	28.75	32.03
23	3	( ), ( )	2	2	36.36	31.25	33.99
. 4							
24	1		1	0	54.55	45.00	55.66
25	2	, ,	2	2	36.36	26.25	42.19
26	3		2	1	50.00	28.75	31.94

4А, Ученик №25

Вариант 6

		( )			( )	( )	( )
1.							
, 4							
1	1		1	1	18.18	35.42	45.08
2	2		2	0	45.45	25.00	19.39
3	3	( , ).	1	0	0.00	12.50	9.59
4	4		2	0	31.82	36.46	30.11
5	5		1	0	36.36	35.42	37.16
6	6		2	0	9.09	9.38	15.36
7	7		2	1	36.36	16.67	11.61
2.							
. 4							
8	1		1	1	42.86	25.00	38.46
9	2		1	0	85.71	83.33	73.06

		( )			( )	( )	( )
10	3	'	1	0	42.86	41.67	28.25
11	4		2	0	7.14	6.25	10.57
. 4 ?							
12	1	'	2	1	35.71	33.33	33.85
13	2		2	2	42.86	35.42	41.62
14	3		1	0	71.43	50.00	52.13
15	4	'	1	0	71.43	45.83	61.65
3.							
. 4							
16	1		1	1	80.00	63.64	56.92
17	2	:	2	0	0.00	4.55	20.45
18	3		2	1	30.00	29.55	38.05
19	4	:	1	1	40.00	31.82	37.32
20	5		2	0	0.00	9.09	17.25
4.							
. 4							
21	1	( , )	1	1	36.36	25.00	34.14
22	2	2 ,	2	0	40.91	28.75	32.03
23	3	( ), ( )	2	0	36.36	31.25	33.99
. 4							
24	1		1	1	54.55	45.00	55.66
25	2	' ,	2	2	36.36	26.25	42.19
26	3		2	1	50.00	28.75	31.94

## 4Г, Ученик №1

## Вариант 7

		( )			( )	( )	( )
1.							
. 4							
1	1		1	0	66.67	52.94	35.37
2	2		1	0	33.33	52.94	36.73
3	3		2	1	50.00	47.06	49.60
4	4	:	2	1	50.00	26.47	29.76
5	5		2	0	66.67	50.00	40.38
2.							
. 4							
6	1	,	2	0	21.43	35.19	41.85
7	2	2	2	1	57.14	54.63	68.05
8	3	,	1	0	14.29	37.04	41.70
. 4							
9	1	,	1	0	14.29	40.74	53.57
10	2		2	0	7.14	7.41	12.51
11	3		2	0	21.43	31.48	36.43
3.							
. 4							
12	1		1	0	66.67	25.00	38.46
13	2		1	1	100.00	83.33	73.06
14	3	,	1	0	33.33	41.67	28.25
15	4		2	0	0.00	6.25	10.57
. 4 ?							
16	1	,	2	0	66.67	33.33	33.85

		( )			( )	( )	( )
17	2		2	1	83.33	35.42	41.62
18	3		1	1	66.67	50.00	52.13
19	4		1	0	33.33	45.83	61.65
4.							
, 4							
20	1		1	1	66.67	35.42	45.08
21	2		2	0	0.00	25.00	19.39
22	3	( )	1	0	33.33	12.50	9.59
23	4		2	0	33.33	36.46	30.11
24	5		1	0	16.67	35.42	37.16
25	6		2	0	0.00	9.38	15.36
26	7		2	0	25.00	16.67	11.61

4Д, Ученик №2

Вариант 7

		( )			( )	( )	( )
1.							
. 4							
1	1		1	0	50.00	52.94	35.37
2	2		1	1	50.00	52.94	36.73
3	3		2	0	25.00	47.06	49.60
4	4	:	2	0	25.00	26.47	29.76
5	5		2	1	33.33	50.00	40.38
2.							
. 4							
6	1	,	2	0	35.71	35.19	41.85
7	2	2	2	1	42.86	54.63	68.05



		( )			( )	( )	( )
8	3		1	0	28.57	37.04	41.70
. 4							
9	1		1	1	21.43	40.74	53.57
10	2		2	0	3.57	7.41	12.51
11	3		2	0	10.71	31.48	36.43
3.							
. 4							
12	1		1	0	0.00	25.00	38.46
13	2		1	1	71.43	83.33	73.06
14	3		1	0	42.86	41.67	28.25
15	4		2	0	0.00	6.25	10.57
. 4 ?							
16	1		2	2	21.43	33.33	33.85
17	2		2	0	14.29	35.42	41.62
18	3		1	0	14.29	50.00	52.13
19	4		1	0	28.57	45.83	61.65
4.							
, 4							
20	1		1	1	45.45	35.42	45.08
21	2		2	2	27.27	25.00	19.39
22	3	( ' , )	1	0	18.18	12.50	9.59
23	4		2	1	40.91	36.46	30.11
24	5		1	1	45.45	35.42	37.16
25	6		2	0	13.64	9.38	15.36
26	7		2	0	4.55	16.67	11.61

## 4Б, Ученик №6

## Вариант 7

		( )			( )	( )	( )
1.							
. 4							
1	1		1	0	25.00	52.94	35.37
2	2		1	1	75.00	52.94	36.73
3	3		2	1	62.50	47.06	49.60
4	4	:	2	0	12.50	26.47	29.76
5	5		2	1	50.00	50.00	40.38
2.							
. 4							
6	1	,	2	0	31.82	35.19	41.85
7	2	2	2	1	50.00	54.63	68.05
8	3	,	1	1	27.27	37.04	41.70
. 4							
9	1	,	1	0	45.45	40.74	53.57
10	2		2	0	4.55	7.41	12.51
11	3		2	0	31.82	31.48	36.43
3.							
. 4							
12	1		1	0	16.67	25.00	38.46
13	2		1	1	83.33	83.33	73.06
14	3	,	1	0	50.00	41.67	28.25
15	4		2	0	16.67	6.25	10.57
. 4 ?							
16	1	,	2	1	25.00	33.33	33.85

		( )			( )	( )	( )
17	2		2	0	33.33	35.42	41.62
18	3		1	1	50.00	50.00	52.13
19	4		1	0	33.33	45.83	61.65
4.							
, 4							
20	1		1	0	27.27	35.42	45.08
21	2		2	0	9.09	25.00	19.39
22	3	( )	1	0	9.09	12.50	9.59
23	4		2	0	45.45	36.46	30.11
24	5		1	0	36.36	35.42	37.16
25	6		2	0	13.64	9.38	15.36
26	7		2	0	9.09	16.67	11.61

4Д, Ученик №7

Вариант 7

		( )			( )	( )	( )
1.							
. 4							
1	1		1	0	50.00	52.94	35.37
2	2		1	1	50.00	52.94	36.73
3	3		2	2	25.00	47.06	49.60
4	4	:	2	1	25.00	26.47	29.76
5	5		2	1	33.33	50.00	40.38
2.							
. 4							
6	1	,	2	0	35.71	35.19	41.85
7	2	2	2	1	42.86	54.63	68.05

		( )			( )	( )	( )
8	3		1	0	28.57	37.04	41.70
. 4							
9	1		1	0	21.43	40.74	53.57
10	2		2	0	3.57	7.41	12.51
11	3		2	0	10.71	31.48	36.43
3.							
. 4							
12	1		1	0	0.00	25.00	38.46
13	2		1	0	71.43	83.33	73.06
14	3		1	0	42.86	41.67	28.25
15	4		2	0	0.00	6.25	10.57
. 4 ?							
16	1		2	0	21.43	33.33	33.85
17	2		2	0	14.29	35.42	41.62
18	3		1	0	14.29	50.00	52.13
19	4		1	0	28.57	45.83	61.65
4.							
, 4							
20	1		1	0	45.45	35.42	45.08
21	2		2	0	27.27	25.00	19.39
22	3	( ' , )	1	0	18.18	12.50	9.59
23	4		2	2	40.91	36.46	30.11
24	5		1	1	45.45	35.42	37.16
25	6		2	0	13.64	9.38	15.36
26	7		2	0	4.55	16.67	11.61

## 4А, Ученик №7

## Вариант 7

		( )			( )	( )	( )
1.							
. 4							
1	1		1	1	100.00	52.94	35.37
2	2		1	0	66.67	52.94	36.73
3	3		2	1	50.00	47.06	49.60
4	4	:	2	1	33.33	26.47	29.76
5	5		2	0	50.00	50.00	40.38
2.							
. 4							
6	1	,	2	1	54.17	35.19	41.85
7	2	2	2	1	62.50	54.63	68.05
8	3	,	1	1	83.33	37.04	41.70
. 4							
9	1	,	1	1	83.33	40.74	53.57
10	2		2	1	20.83	7.41	12.51
11	3		2	0	29.17	31.48	36.43
3.							
. 4							
12	1		1	0	42.86	25.00	38.46
13	2		1	1	85.71	83.33	73.06
14	3	,	1	0	42.86	41.67	28.25
15	4		2	0	7.14	6.25	10.57
. 4 ?							
16	1	,	2	2	35.71	33.33	33.85

		( )			( )	( )	( )
17	2		2	1	42.86	35.42	41.62
18	3		1	1	71.43	50.00	52.13
19	4		1	1	71.43	45.83	61.65
4.							
, 4							
20	1		1	0	18.18	35.42	45.08
21	2		2	2	45.45	25.00	19.39
22	3	( )	1	0	0.00	12.50	9.59
23	4		2	1	31.82	36.46	30.11
24	5		1	1	36.36	35.42	37.16
25	6		2	0	9.09	9.38	15.36
26	7		2	1	36.36	16.67	11.61

4Б, Ученик №8

Вариант 7

		( )			( )	( )	( )
1.							
. 4							
1	1		1	0	25.00	52.94	35.37
2	2		1	0	75.00	52.94	36.73
3	3		2	1	62.50	47.06	49.60
4	4	:	2	0	12.50	26.47	29.76
5	5		2	1	50.00	50.00	40.38
2.							
. 4							
6	1	,	2	0	31.82	35.19	41.85
7	2	2	2	1	50.00	54.63	68.05

		( )			( )	( )	( )
8	3		1	1	27.27	37.04	41.70
. 4							
9	1		1	0	45.45	40.74	53.57
10	2		2	0	4.55	7.41	12.51
11	3		2	1	31.82	31.48	36.43
3.							
. 4							
12	1		1	1	16.67	25.00	38.46
13	2		1	1	83.33	83.33	73.06
14	3		1	0	50.00	41.67	28.25
15	4		2	0	16.67	6.25	10.57
. 4 ?							
16	1		2	1	25.00	33.33	33.85
17	2		2	0	33.33	35.42	41.62
18	3		1	0	50.00	50.00	52.13
19	4		1	0	33.33	45.83	61.65
4.							
, 4							
20	1		1	1	27.27	35.42	45.08
21	2		2	0	9.09	25.00	19.39
22	3	( ' , )	1	0	9.09	12.50	9.59
23	4		2	2	45.45	36.46	30.11
24	5		1	1	36.36	35.42	37.16
25	6		2	0	13.64	9.38	15.36
26	7		2	1	9.09	16.67	11.61

## 4Д, Ученик №14

## Вариант 7

		( )			( )	( )	( )
1.							
. 4							
1	1		1	0	50.00	52.94	35.37
2	2		1	0	50.00	52.94	36.73
3	3		2	0	25.00	47.06	49.60
4	4	:	2	0	25.00	26.47	29.76
5	5		2	0	33.33	50.00	40.38
2.							
. 4							
6	1	,	2	0	35.71	35.19	41.85
7	2	2	2	0	42.86	54.63	68.05
8	3	,	1	0	28.57	37.04	41.70
. 4							
9	1	,	1	0	21.43	40.74	53.57
10	2		2	0	3.57	7.41	12.51
11	3		2	0	10.71	31.48	36.43
3.							
. 4							
12	1		1	0	0.00	25.00	38.46
13	2		1	1	71.43	83.33	73.06
14	3	,	1	1	42.86	41.67	28.25
15	4		2	0	0.00	6.25	10.57
. 4 ?							
16	1	,	2	0	21.43	33.33	33.85



		( )			( )	( )	( )
17	2		2	2	14.29	35.42	41.62
18	3		1	1	14.29	50.00	52.13
19	4		1	0	28.57	45.83	61.65
4.							
, 4							
20	1		1	0	45.45	35.42	45.08
21	2		2	0	27.27	25.00	19.39
22	3	( )	1	0	18.18	12.50	9.59
23	4		2	0	40.91	36.46	30.11
24	5		1	1	45.45	35.42	37.16
25	6		2	0	13.64	9.38	15.36
26	7		2	0	4.55	16.67	11.61

#### 4Д, Ученик №15

#### Вариант 7

		( )			( )	( )	( )
1.							
. 4							
1	1		1	1	50.00	52.94	35.37
2	2		1	0	50.00	52.94	36.73
3	3		2	1	25.00	47.06	49.60
4	4	:	2	0	25.00	26.47	29.76
5	5		2	1	33.33	50.00	40.38
2.							
. 4							
6	1		2	0	35.71	35.19	41.85
7	2	2	2	0	42.86	54.63	68.05

		( )			( )	( )	( )
8	3		1	0	28.57	37.04	41.70
. 4							
9	1		1	0	21.43	40.74	53.57
10	2		2	0	3.57	7.41	12.51
11	3		2	0	10.71	31.48	36.43
3.							
. 4							
12	1		1	0	0.00	25.00	38.46
13	2		1	0	71.43	83.33	73.06
14	3		1	1	42.86	41.67	28.25
15	4		2	0	0.00	6.25	10.57
. 4 ?							
16	1		2	0	21.43	33.33	33.85
17	2		2	0	14.29	35.42	41.62
18	3		1	0	14.29	50.00	52.13
19	4		1	0	28.57	45.83	61.65
4.							
, 4							
20	1		1	1	45.45	35.42	45.08
21	2		2	0	27.27	25.00	19.39
22	3	( ' , )	1	1	18.18	12.50	9.59
23	4		2	2	40.91	36.46	30.11
24	5		1	0	45.45	35.42	37.16
25	6		2	1	13.64	9.38	15.36
26	7		2	0	4.55	16.67	11.61

## 4А, Ученик №18

## Вариант 7

		( )			( )	( )	( )
1.							
. 4							
1	1		1	1	100.00	52.94	35.37
2	2		1	1	66.67	52.94	36.73
3	3		2	1	50.00	47.06	49.60
4	4	:	2	0	33.33	26.47	29.76
5	5		2	2	50.00	50.00	40.38
2.							
. 4							
6	1	,	2	2	54.17	35.19	41.85
7	2	2	2	2	62.50	54.63	68.05
8	3	,	1	1	83.33	37.04	41.70
. 4							
9	1	,	1	1	83.33	40.74	53.57
10	2		2	0	20.83	7.41	12.51
11	3		2	0	29.17	31.48	36.43
3.							
. 4							
12	1		1	0	42.86	25.00	38.46
13	2		1	1	85.71	83.33	73.06
14	3	,	1	1	42.86	41.67	28.25
15	4		2	0	7.14	6.25	10.57
. 4 ?							
16	1	,	2	0	35.71	33.33	33.85

		( )			( )	( )	( )
17	2		2	1	42.86	35.42	41.62
18	3		1	1	71.43	50.00	52.13
19	4		1	1	71.43	45.83	61.65
4.							
, 4							
20	1		1	1	18.18	35.42	45.08
21	2		2	2	45.45	25.00	19.39
22	3	( )	1	0	0.00	12.50	9.59
23	4		2	1	31.82	36.46	30.11
24	5		1	0	36.36	35.42	37.16
25	6		2	0	9.09	9.38	15.36
26	7		2	0	36.36	16.67	11.61

4Г, Ученик №22

Вариант 7

		( )			( )	( )	( )
1.							
. 4							
1	1		1	1	66.67	52.94	35.37
2	2		1	1	33.33	52.94	36.73
3	3		2	1	50.00	47.06	49.60
4	4	:	2	1	50.00	26.47	29.76
5	5		2	2	66.67	50.00	40.38
2.							
. 4							
6	1		2	1	21.43	35.19	41.85
7	2	2	2	1	57.14	54.63	68.05

		( )			( )	( )	( )
8	3		1	0	14.29	37.04	41.70
. 4							
9	1		1	1	14.29	40.74	53.57
10	2		2	1	7.14	7.41	12.51
11	3		2	2	21.43	31.48	36.43
3.							
. 4							
12	1		1	1	66.67	25.00	38.46
13	2		1	1	100.00	83.33	73.06
14	3		1	0	33.33	41.67	28.25
15	4		2	0	0.00	6.25	10.57
. 4 ?							
16	1		2	2	66.67	33.33	33.85
17	2		2	2	83.33	35.42	41.62
18	3		1	0	66.67	50.00	52.13
19	4		1	1	33.33	45.83	61.65
4.							
, 4							
20	1		1	0	66.67	35.42	45.08
21	2		2	0	0.00	25.00	19.39
22	3	( , )	1	0	33.33	12.50	9.59
23	4		2	0	33.33	36.46	30.11
24	5		1	1	16.67	35.42	37.16
25	6		2	0	0.00	9.38	15.36
26	7		2	1	25.00	16.67	11.61

## 4Д, Ученик №23

## Вариант 7

		( )			( )	( )	( )
1.							
. 4							
1	1		1	1	50.00	52.94	35.37
2	2		1	1	50.00	52.94	36.73
3	3		2	0	25.00	47.06	49.60
4	4	:	2	1	25.00	26.47	29.76
5	5		2	0	33.33	50.00	40.38
2.							
. 4							
6	1	,	2	2	35.71	35.19	41.85
7	2	2	2	1	42.86	54.63	68.05
8	3	,	1	0	28.57	37.04	41.70
. 4							
9	1	,	1	1	21.43	40.74	53.57
10	2		2	0	3.57	7.41	12.51
11	3		2	1	10.71	31.48	36.43
3.							
. 4							
12	1		1	0	0.00	25.00	38.46
13	2		1	1	71.43	83.33	73.06
14	3	,	1	0	42.86	41.67	28.25
15	4		2	0	0.00	6.25	10.57
. 4 ?							
16	1	,	2	1	21.43	33.33	33.85

		( )			( )	( )	( )
17	2		2	0	14.29	35.42	41.62
18	3		1	0	14.29	50.00	52.13
19	4		1	1	28.57	45.83	61.65
4.							
, 4							
20	1		1	1	45.45	35.42	45.08
21	2		2	0	27.27	25.00	19.39
22	3	( ' )	1	0	18.18	12.50	9.59
23	4		2	1	40.91	36.46	30.11
24	5		1	0	45.45	35.42	37.16
25	6		2	0	13.64	9.38	15.36
26	7		2	0	4.55	16.67	11.61

4Б, Ученик №24

Вариант 7

		( )			( )	( )	( )
1.							
. 4							
1	1		1	1	25.00	52.94	35.37
2	2		1	1	75.00	52.94	36.73
3	3		2	2	62.50	47.06	49.60
4	4	:	2	0	12.50	26.47	29.76
5	5		2	1	50.00	50.00	40.38
2.							
. 4							
6	1	,	2	2	31.82	35.19	41.85
7	2	2	2	1	50.00	54.63	68.05

		( )			( )	( )	( )
8	3		1	0	27.27	37.04	41.70
. 4							
9	1		1	1	45.45	40.74	53.57
10	2		2	0	4.55	7.41	12.51
11	3		2	2	31.82	31.48	36.43
3.							
. 4							
12	1		1	0	16.67	25.00	38.46
13	2		1	1	83.33	83.33	73.06
14	3		1	0	50.00	41.67	28.25
15	4		2	0	16.67	6.25	10.57
. 4 ?							
16	1		2	1	25.00	33.33	33.85
17	2		2	2	33.33	35.42	41.62
18	3		1	1	50.00	50.00	52.13
19	4		1	1	33.33	45.83	61.65
4.							
, 4							
20	1		1	0	27.27	35.42	45.08
21	2		2	0	9.09	25.00	19.39
22	3	( ' , )	1	0	9.09	12.50	9.59
23	4		2	1	45.45	36.46	30.11
24	5		1	0	36.36	35.42	37.16
25	6		2	0	13.64	9.38	15.36
26	7		2	0	9.09	16.67	11.61



4В, Ученик №1

Вариант 8

		( )			( )	( )	( )
1.							
. 4							
1	1		1	0	0.00	4.35	17.07
2	2		2	1	50.00	47.83	53.85
3	3		2	0	33.33	47.83	33.79
4	4		1	0	66.67	52.17	43.85
5	5		2	1	50.00	52.17	57.80
. 4							
6	1		1	0	0.00	21.74	29.77
7	2		1	0	0.00	21.74	36.67
8	3		2	1	83.33	60.87	53.45
9	4		2	0	50.00	56.52	53.75
2.							
, 4							
10	1		1	0	33.33	35.42	45.08
11	2		2	0	33.33	25.00	19.39
12	3	( )	1	0	11.11	12.50	9.59
13	4		2	0	27.78	36.46	30.11
14	5		1	0	33.33	35.42	37.16
15	6		2	0	5.56	9.38	15.36

		( )			( )	( )	( )
16	7		2	1	11.11	16.67	11.61
3.							
. 4 .							
17	1	« »	2	2	44.44	45.45	44.13
18	2	« ' »	4	0	22.22	28.03	26.03
19	3	« ' »	2	0	33.33	24.24	24.69
4.							
. 4 .							
20	1	, ' ,	2	0	25.00	35.19	41.85
21	2	2	2	1	65.00	54.63	68.05
22	3	, ' ,	1	0	20.00	37.04	41.70
. 4 .							
23	1	'	1	0	30.00	40.74	53.57
24	2		2	0	0.00	7.41	12.51
25	3		2	0	70.00	31.48	36.43

4Д, Ученик №1

Вариант 8

		( )			( )	( )	( )
1.							
. 4 .							
1	1	'	1	0	0.00	4.35	17.07
2	2	, ' ,	2	1	50.00	47.83	53.85
3	3	'	2	2	75.00	47.83	33.79
4	4	'	1	1	50.00	52.17	43.85

		( )			( )	( )	( )
5	5		2	1	50.00	52.17	57.80
. 4							
6	1		1	0	50.00	21.74	29.77
7	2		1	0	0.00	21.74	36.67
8	3		2	2	75.00	60.87	53.45
9	4		2	2	87.50	56.52	53.75
2.							
, 4							
10	1		1	0	45.45	35.42	45.08
11	2		2	0	27.27	25.00	19.39
12	3	( )	1	0	18.18	12.50	9.59
13	4		2	0	40.91	36.46	30.11
14	5		1	0	45.45	35.42	37.16
15	6		2	0	13.64	9.38	15.36
16	7		2	1	4.55	16.67	11.61
3.							
. 4							
17	1	« »	2	1	35.71	45.45	44.13
18	2	« »	4	1	25.00	28.03	26.03
19	3	« »	2	0	21.43	24.24	24.69
4.							
. 4							
20	1		2	1	35.71	35.19	41.85
21	2	2	2	1	42.86	54.63	68.05

		( )			( )	( )	( )
22	3		1	1	28.57	37.04	41.70
. 4							
23	1		1	0	21.43	40.74	53.57
24	2		2	0	3.57	7.41	12.51
25	3		2	0	10.71	31.48	36.43

## 4Б, Ученик №2

### Вариант 8

		( )			( )	( )	( )
1.							
. 4							
1	1		1	0	0.00	4.35	17.07
2	2		2	1	41.67	47.83	53.85
3	3		2	0	50.00	47.83	33.79
4	4		1	0	33.33	52.17	43.85
5	5		2	1	50.00	52.17	57.80
. 4							
6	1		1	0	16.67	21.74	29.77
7	2		1	0	33.33	21.74	36.67
8	3		2	1	41.67	60.87	53.45
9	4		2	1	58.33	56.52	53.75
2.							
, 4							
10	1		1	0	27.27	35.42	45.08
11	2		2	0	9.09	25.00	19.39

		( )			( )	( )	( )
12	3	( ' . ). ,	1	0	9.09	12.50	9.59
13	4	.	2	0	45.45	36.46	30.11
14	5	.	1	0	36.36	35.42	37.16
15	6	.	2	0	13.64	9.38	15.36
16	7	.	2	0	9.09	16.67	11.61
3.							
. 4 .							
17	1	« »	2	1	57.14	45.45	44.13
18	2	« ' »	4	0	32.14	28.03	26.03
19	3	« ' »	2	0	14.29	24.24	24.69
4.							
. 4 .							
20	1	, ' ,	2	1	31.82	35.19	41.85
21	2	' 2	2	1	50.00	54.63	68.05
22	3	, ' ,	1	0	27.27	37.04	41.70
. 4 .							
23	1	'	1	0	45.45	40.74	53.57
24	2		2	0	4.55	7.41	12.51
25	3		2	0	31.82	31.48	36.43

4Б, Ученик №3

Вариант 8

		( )			( )	( )	( )
1.							
. 4 .							
1	1	'	1	0	0.00	4.35	17.07

		( )			( )	( )	( )
2	2		2	1	41.67	47.83	53.85
3	3		2	1	50.00	47.83	33.79
4	4		1	0	33.33	52.17	43.85
5	5		2	1	50.00	52.17	57.80
. 4							
6	1		1	0	16.67	21.74	29.77
7	2		1	0	33.33	21.74	36.67
8	3		2	0	41.67	60.87	53.45
9	4		2	0	58.33	56.52	53.75
2.							
, 4							
10	1		1	0	27.27	35.42	45.08
11	2		2	0	9.09	25.00	19.39
12	3	( )	1	0	9.09	12.50	9.59
13	4		2	0	45.45	36.46	30.11
14	5		1	0	36.36	35.42	37.16
15	6		2	0	13.64	9.38	15.36
16	7		2	0	9.09	16.67	11.61
3.							
. 4							
17	1	« »	2	1	57.14	45.45	44.13
18	2	« »	4	1	32.14	28.03	26.03
19	3	« »	2	0	14.29	24.24	24.69
4.							

		( )			( )	( )	( )
. 4							
20	1		2	0	31.82	35.19	41.85
21	2	2	2	0	50.00	54.63	68.05
22	3		1	0	27.27	37.04	41.70
. 4							
23	1		1	0	45.45	40.74	53.57
24	2		2	0	4.55	7.41	12.51
25	3		2	1	31.82	31.48	36.43

4А, Ученик №6

Вариант 8

		( )			( )	( )	( )
1.							
. 4							
1	1		1	0	0.00	4.35	17.07
2	2		2	1	50.00	47.83	53.85
3	3		2	2	60.00	47.83	33.79
4	4		1	1	80.00	52.17	43.85
5	5		2	1	50.00	52.17	57.80
. 4							
6	1		1	0	40.00	21.74	29.77
7	2		1	0	40.00	21.74	36.67
8	3		2	2	80.00	60.87	53.45
9	4		2	0	50.00	56.52	53.75
2.							

		( )			( )	( )	( )
, 4							
10	1		1	0	18.18	35.42	45.08
11	2		2	0	45.45	25.00	19.39
12	3	( ' . ).	1	0	0.00	12.50	9.59
13	4		2	1	31.82	36.46	30.11
14	5		1	0	36.36	35.42	37.16
15	6		2	0	9.09	9.38	15.36
16	7		2	2	36.36	16.67	11.61
3.							
. 4							
17	1	« »	2	1	50.00	45.45	44.13
18	2	« ' »	4	1	33.33	28.03	26.03
19	3	« ' »	2	1	27.78	24.24	24.69
4.							
. 4							
20	1	, ' ,	2	0	54.17	35.19	41.85
21	2	' 2	2	0	62.50	54.63	68.05
22	3	, ' ,	1	1	83.33	37.04	41.70
. 4							
23	1	'	1	0	83.33	40.74	53.57
24	2		2	1	20.83	7.41	12.51
25	3		2	0	29.17	31.48	36.43

4Б, Ученик №13

Вариант 8

		( )			( )	( )	( )
--	--	-----	--	--	-----	-----	-----



		( )			( )	( )	( )
1.							
. 4							
1	1	'	1	0	0.00	4.35	17.07
2	2	' ,	2	0	41.67	47.83	53.85
3	3	'	2	0	50.00	47.83	33.79
4	4	' ,	1	0	33.33	52.17	43.85
5	5	' ,	2	0	50.00	52.17	57.80
. 4							
6	1	'	1	0	16.67	21.74	29.77
7	2	'	1	0	33.33	21.74	36.67
8	3	'	2	0	41.67	60.87	53.45
9	4	'	2	1	58.33	56.52	53.75
2.							
, 4							
10	1	'	1	0	27.27	35.42	45.08
11	2	'	2	0	9.09	25.00	19.39
12	3	( ' , . ).	1	1	9.09	12.50	9.59
13	4	'	2	0	45.45	36.46	30.11
14	5	'	1	0	36.36	35.42	37.16
15	6	'	2	0	13.64	9.38	15.36
16	7	'	2	0	9.09	16.67	11.61
3.							
. 4							
17	1	« »	2	0	57.14	45.45	44.13

		( )			( )	( )	( )
18	2	« ' »	4	0	32.14	28.03	26.03
19	3	« ' »	2	0	14.29	24.24	24.69
4.							
. 4							
20	1	, ' ,	2	0	31.82	35.19	41.85
21	2	2 ' ,	2	1	50.00	54.63	68.05
22	3	, ' ,	1	0	27.27	37.04	41.70
. 4							
23	1	, ' ,	1	0	45.45	40.74	53.57
24	2		2	0	4.55	7.41	12.51
25	3		2	0	31.82	31.48	36.43

4Д, Ученик №16

Вариант 8

		( )			( )	( )	( )
1.							
. 4							
1	1	, ' ,	1	0	0.00	4.35	17.07
2	2	, ' ,	2	1	50.00	47.83	53.85
3	3	, ' ,	2	0	75.00	47.83	33.79
4	4	, ' ,	1	0	50.00	52.17	43.85
5	5	, ' ,	2	0	50.00	52.17	57.80
. 4							
6	1	, ' ,	1	0	50.00	21.74	29.77
7	2	, ' ,	1	0	0.00	21.74	36.67
8	3	, ' ,	2	2	75.00	60.87	53.45

		( )			( )	( )	( )
9	4		2	1	87.50	56.52	53.75
2.							
, 4							
10	1		1	0	45.45	35.42	45.08
11	2		2	0	27.27	25.00	19.39
12	3	( )	1	0	18.18	12.50	9.59
13	4		2	2	40.91	36.46	30.11
14	5		1	0	45.45	35.42	37.16
15	6		2	0	13.64	9.38	15.36
16	7		2	0	4.55	16.67	11.61
3.							
. 4							
17	1	« »	2	0	35.71	45.45	44.13
18	2	« »	4	0	25.00	28.03	26.03
19	3	« »	2	0	21.43	24.24	24.69
4.							
. 4							
20	1		2	2	35.71	35.19	41.85
21	2	2	2	1	42.86	54.63	68.05
22	3		1	1	28.57	37.04	41.70
. 4							
23	1		1	0	21.43	40.74	53.57
24	2		2	0	3.57	7.41	12.51
25	3		2	0	10.71	31.48	36.43

		( )			( )	( )	( )
1.							
. 4							
1	1		1	0	0.00	4.35	17.07
2	2		2	1	50.00	47.83	53.85
3	3		2	0	33.33	47.83	33.79
4	4		1	1	66.67	52.17	43.85
5	5		2	1	50.00	52.17	57.80
. 4							
6	1		1	0	0.00	21.74	29.77
7	2		1	0	0.00	21.74	36.67
8	3		2	2	83.33	60.87	53.45
9	4		2	1	50.00	56.52	53.75
2.							
, 4							
10	1		1	1	33.33	35.42	45.08
11	2		2	0	33.33	25.00	19.39
12	3	( )	1	0	11.11	12.50	9.59
13	4		2	1	27.78	36.46	30.11
14	5		1	0	33.33	35.42	37.16
15	6		2	0	5.56	9.38	15.36
16	7		2	0	11.11	16.67	11.61
3.							

		( )			( )	( )	( )
. 4 .							
17	1	« »	2	2	44.44	45.45	44.13
18	2	« ' »	4	2	22.22	28.03	26.03
19	3	« ' »	2	2	33.33	24.24	24.69
4.							
. 4 .							
20	1	, ' ,	2	0	25.00	35.19	41.85
21	2	' 2	2	0	65.00	54.63	68.05
22	3	, ' ,	1	0	20.00	37.04	41.70
. 4 .							
23	1	'	1	1	30.00	40.74	53.57
24	2		2	0	0.00	7.41	12.51
25	3		2	2	70.00	31.48	36.43

4А, Ученик №16

Вариант 8

		( )			( )	( )	( )
1.							
. 4 .							
1	1	'	1	0	0.00	4.35	17.07
2	2	' ,	2	1	50.00	47.83	53.85
3	3	'	2	2	60.00	47.83	33.79
4	4	' ,	1	1	80.00	52.17	43.85
5	5	' ,	2	1	50.00	52.17	57.80
. 4 .							
6	1	'	1	1	40.00	21.74	29.77

		( )			( )	( )	( )
7	2		1	1	40.00	21.74	36.67
8	3		2	2	80.00	60.87	53.45
9	4		2	2	50.00	56.52	53.75
2.							
, 4							
10	1		1	0	18.18	35.42	45.08
11	2		2	0	45.45	25.00	19.39
12	3	( )	1	0	0.00	12.50	9.59
13	4		2	0	31.82	36.46	30.11
14	5		1	0	36.36	35.42	37.16
15	6		2	2	9.09	9.38	15.36
16	7		2	0	36.36	16.67	11.61
3.							
. 4							
17	1	« »	2	1	50.00	45.45	44.13
18	2	« »	4	1	33.33	28.03	26.03
19	3	« »	2	2	27.78	24.24	24.69
4.							
. 4							
20	1		2	2	54.17	35.19	41.85
21	2	2	2	1	62.50	54.63	68.05
22	3		1	1	83.33	37.04	41.70
. 4							
23	1		1	1	83.33	40.74	53.57
24	2		2	0	20.83	7.41	12.51

		( )			( )	( )	( )
25	3		2	1	29.17	31.48	36.43

4Б, Ученик №21

Вариант 8

		( )			( )	( )	( )
1.							
. 4							
1	1		1	0	0.00	4.35	17.07
2	2		2	1	41.67	47.83	53.85
3	3		2	2	50.00	47.83	33.79
4	4		1	1	33.33	52.17	43.85
5	5		2	2	50.00	52.17	57.80
. 4							
6	1		1	0	16.67	21.74	29.77
7	2		1	0	33.33	21.74	36.67
8	3		2	2	41.67	60.87	53.45
9	4		2	1	58.33	56.52	53.75
2.							
, 4							
10	1		1	0	27.27	35.42	45.08
11	2		2	2	9.09	25.00	19.39
12	3	( ' . . ).	1	0	9.09	12.50	9.59
13	4		2	2	45.45	36.46	30.11
14	5		1	1	36.36	35.42	37.16
15	6		2	2	13.64	9.38	15.36
16	7		2	1	9.09	16.67	11.61

		( )			( )	( )	( )
3.							
. 4 .							
17	1	« »	2	2	57.14	45.45	44.13
18	2	« ' »	4	0	32.14	28.03	26.03
19	3	« ' »	2	1	14.29	24.24	24.69
4.							
. 4 .							
20	1	, ' ,	2	0	31.82	35.19	41.85
21	2	2 ' ,	2	1	50.00	54.63	68.05
22	3	, ' ,	1	1	27.27	37.04	41.70
. 4 .							
23	1	' ,	1	1	45.45	40.74	53.57
24	2		2	1	4.55	7.41	12.51
25	3		2	2	31.82	31.48	36.43

4Г, Ученик №21

Вариант 8

		( )			( )	( )	( )
1.							
. 4 .							
1	1	' ,	1	0	20.00	4.35	17.07
2	2	, ' ,	2	1	50.00	47.83	53.85
3	3	' ,	2	0	20.00	47.83	33.79
4	4	' ,	1	0	40.00	52.17	43.85
5	5	' ,	2	1	60.00	52.17	57.80



		( )			( )	( )	( )
. 4							
6	1		1	0	0.00	21.74	29.77
7	2		1	0	20.00	21.74	36.67
8	3		2	0	40.00	60.87	53.45
9	4		2	0	40.00	56.52	53.75
2.							
, 4							
10	1		1	0	66.67	35.42	45.08
11	2		2	0	0.00	25.00	19.39
12	3	( ' . ).	1	0	33.33	12.50	9.59
13	4		2	0	33.33	36.46	30.11
14	5		1	0	16.67	35.42	37.16
15	6		2	0	0.00	9.38	15.36
16	7		2	0	25.00	16.67	11.61
3.							
. 4							
17	1	« »	2	0	0.00	45.45	44.13
18	2	« ' »	4	1	25.00	28.03	26.03
19	3	« ' »	2	0	0.00	24.24	24.69
4.							
. 4							
20	1		2	0	21.43	35.19	41.85
21	2	2	2	1	57.14	54.63	68.05
22	3		1	0	14.29	37.04	41.70

		( )			( )	( )	( )
. 4 .							
23	1		1	0	14.29	40.74	53.57
24	2		2	0	7.14	7.41	12.51
25	3		2	0	21.43	31.48	36.43

4А, Ученик №22

Вариант 8

		( )			( )	( )	( )
1.							
. 4 .							
1	1		1	0	0.00	4.35	17.07
2	2		2	2	50.00	47.83	53.85
3	3		2	1	60.00	47.83	33.79
4	4		1	1	80.00	52.17	43.85
5	5		2	2	50.00	52.17	57.80
. 4 .							
6	1		1	0	40.00	21.74	29.77
7	2		1	0	40.00	21.74	36.67
8	3		2	2	80.00	60.87	53.45
9	4		2	2	50.00	56.52	53.75
2.							
, 4							
10	1		1	0	18.18	35.42	45.08
11	2		2	2	45.45	25.00	19.39
12	3	( ' . . ) .	1	0	0.00	12.50	9.59
13	4		2	0	31.82	36.46	30.11

		( )			( )	( )	( )
14	5	.	1	1	36.36	35.42	37.16
15	6	.	2	0	9.09	9.38	15.36
16	7	.	2	0	36.36	16.67	11.61
3.							
. 4 .							
17	1	« »	2	1	50.00	45.45	44.13
18	2	« ' »	4	1	33.33	28.03	26.03
19	3	- ' « »	2	0	27.78	24.24	24.69
4.							
. 4 .							
20	1	, ' ,	2	2	54.17	35.19	41.85
21	2	' 2	2	1	62.50	54.63	68.05
22	3	, ' ,	1	1	83.33	37.04	41.70
. 4 .							
23	1	'	1	1	83.33	40.74	53.57
24	2		2	0	20.83	7.41	12.51
25	3		2	1	29.17	31.48	36.43

4А, Ученик №26

Вариант 8

		( )			( )	( )	( )
1.							
. 4 .							
1	1	'	1	0	0.00	4.35	17.07
2	2	, ,	2	1	50.00	47.83	53.85
3	3	'	2	1	60.00	47.83	33.79

		( )			( )	( )	( )
4	4		1	1	80.00	52.17	43.85
5	5		2	1	50.00	52.17	57.80
. 4							
6	1		1	1	40.00	21.74	29.77
7	2		1	1	40.00	21.74	36.67
8	3		2	1	80.00	60.87	53.45
9	4		2	1	50.00	56.52	53.75
2.							
, 4							
10	1		1	0	18.18	35.42	45.08
11	2		2	0	45.45	25.00	19.39
12	3	( )	1	0	0.00	12.50	9.59
13	4		2	1	31.82	36.46	30.11
14	5		1	0	36.36	35.42	37.16
15	6		2	0	9.09	9.38	15.36
16	7		2	1	36.36	16.67	11.61
3.							
. 4							
17	1	« »	2	1	50.00	45.45	44.13
18	2	« »	4	1	33.33	28.03	26.03
19	3	« »	2	0	27.78	24.24	24.69
4.							
. 4							
20	1		2	2	54.17	35.19	41.85
21	2	2	2	2	62.50	54.63	68.05

		( )			( )	( )	( )
22	3		1	0	83.33	37.04	41.70
. 4							
23	1		1	1	83.33	40.74	53.57
24	2		2	0	20.83	7.41	12.51
25	3		2	1	29.17	31.48	36.43

4Б, Ученик №26

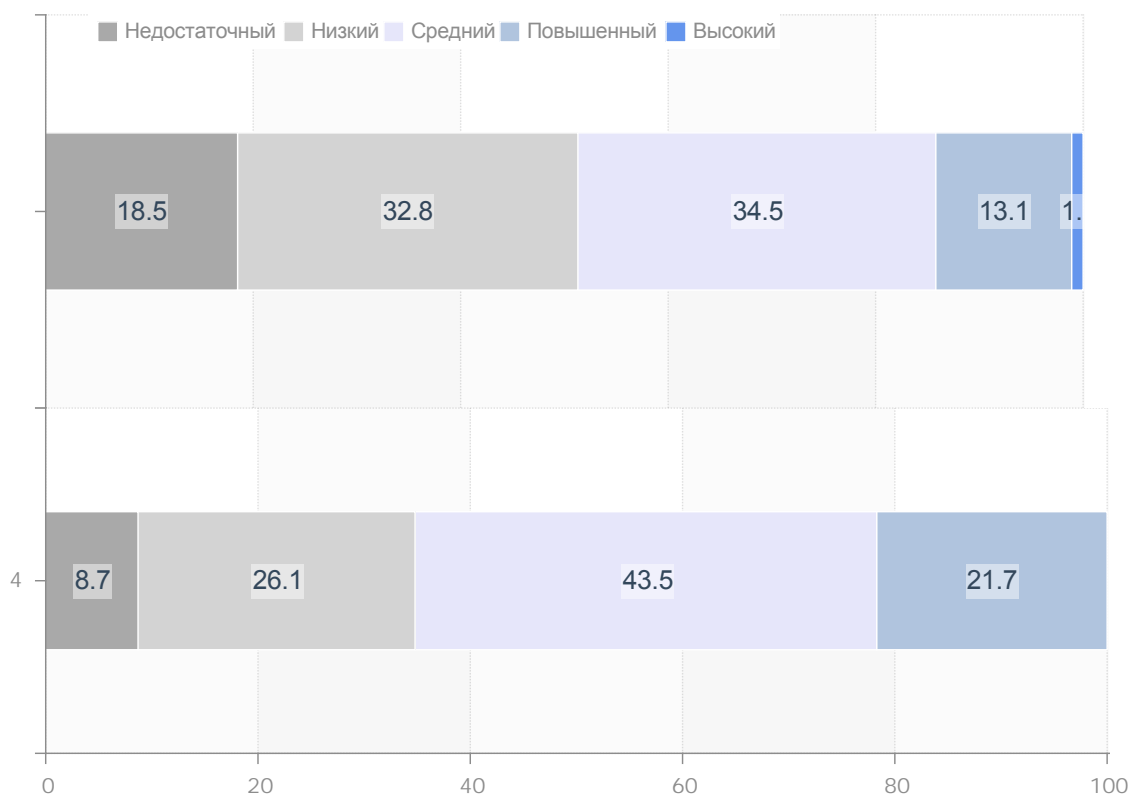
Вариант 8

		( )			( )	( )	( )
1.							
. 4							
1	1		1	0	0.00	4.35	17.07
2	2		2	1	41.67	47.83	53.85
3	3		2	2	50.00	47.83	33.79
4	4		1	1	33.33	52.17	43.85
5	5		2	1	50.00	52.17	57.80
. 4							
6	1		1	1	16.67	21.74	29.77
7	2		1	1	33.33	21.74	36.67
8	3		2	0	41.67	60.87	53.45
9	4		2	2	58.33	56.52	53.75
2.							
, 4							
10	1		1	1	27.27	35.42	45.08
11	2		2	0	9.09	25.00	19.39

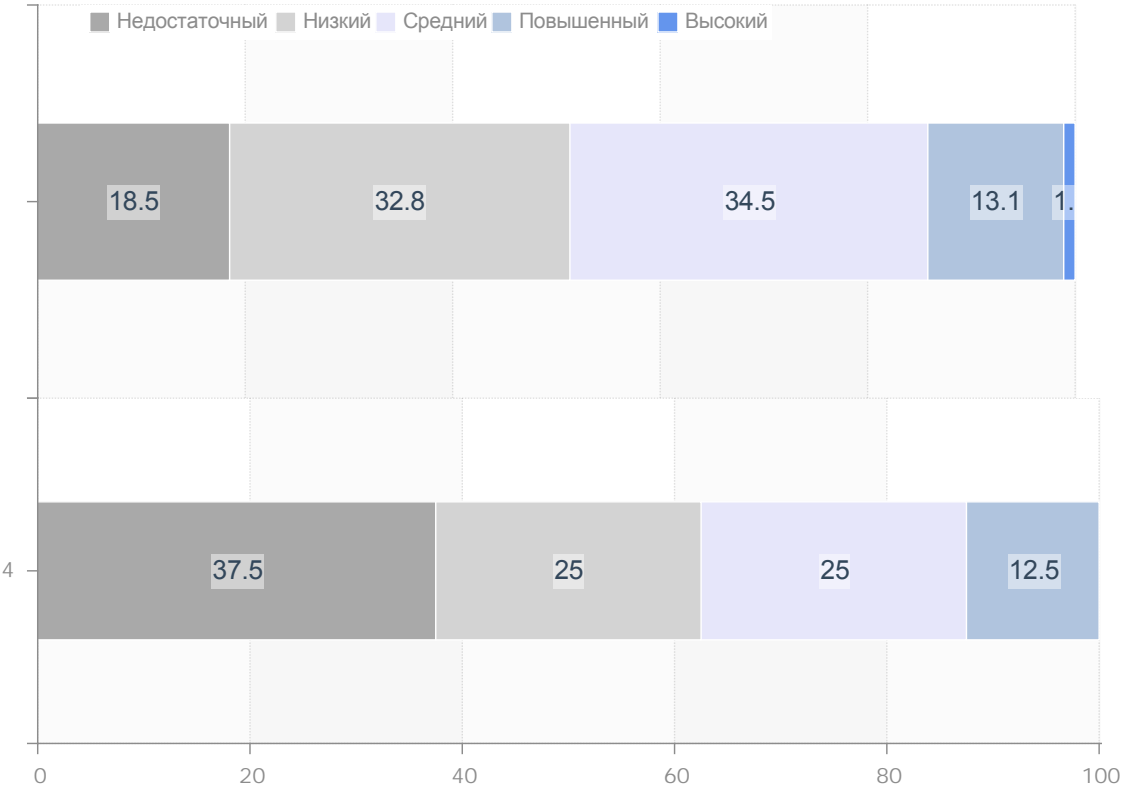
		( )			( )	( )	( )
12	3	( ' . ). ,	1	0	9.09	12.50	9.59
13	4	.	2	2	45.45	36.46	30.11
14	5	.	1	1	36.36	35.42	37.16
15	6	.	2	0	13.64	9.38	15.36
16	7	.	2	0	9.09	16.67	11.61
3.							
. 4 .							
17	1	« »	2	1	57.14	45.45	44.13
18	2	« ' »	4	4	32.14	28.03	26.03
19	3	- ' « »	2	0	14.29	24.24	24.69
4.							
. 4 .							
20	1	, ' ,	2	0	31.82	35.19	41.85
21	2	' 2	2	2	50.00	54.63	68.05
22	3	, ' ,	1	0	27.27	37.04	41.70
. 4 .							
23	1	'	1	1	45.45	40.74	53.57
24	2		2	0	4.55	7.41	12.51
25	3		2	0	31.82	31.48	36.43

4.

4

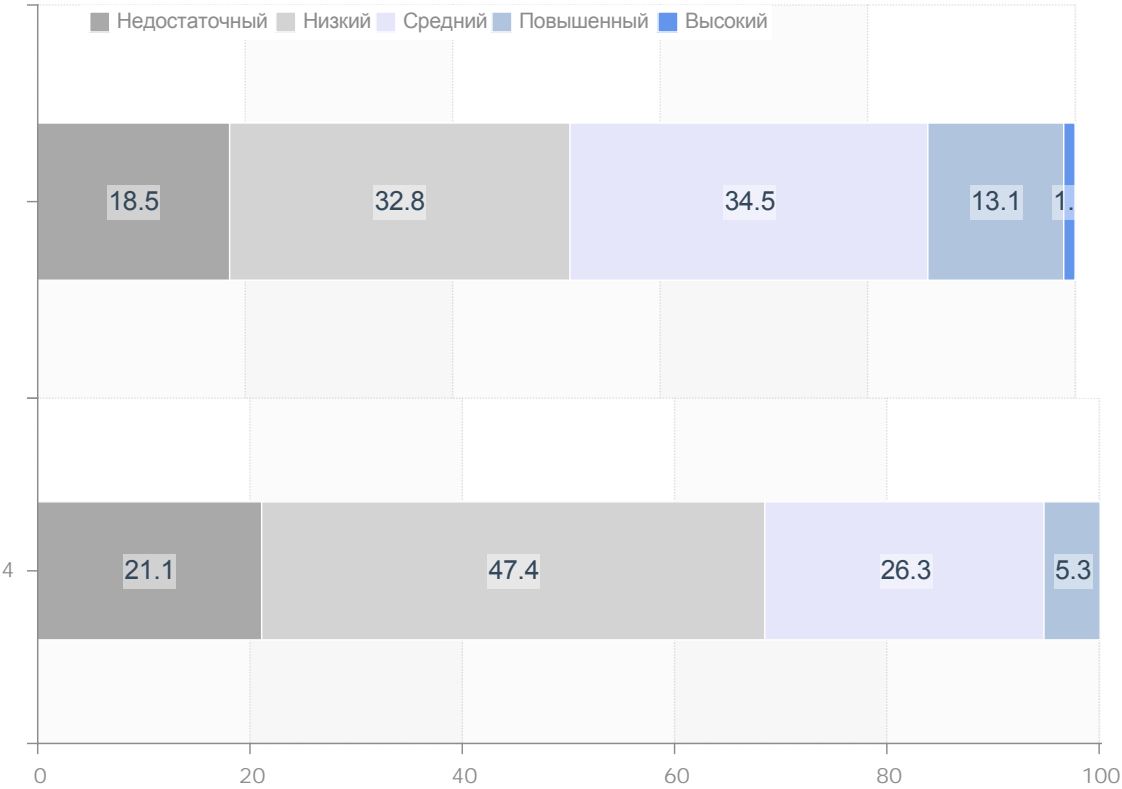


	4A	Свердловская область
Недостаточный	8.7	18.5
Низкий	26.1	32.8
Средний	43.5	34.5
Повышенный	21.7	13.1
Высокий	0.0	1.1

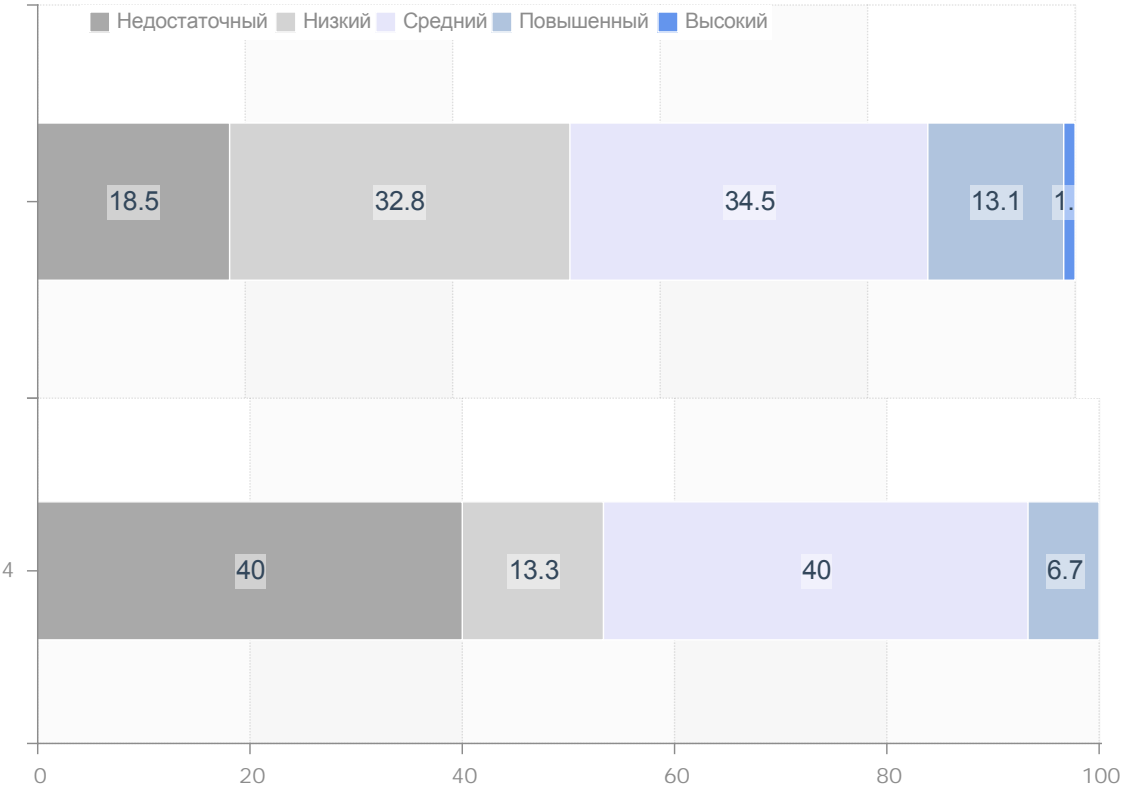


	4Б	Свердловская область
Недостаточный	37.5	18.5
Низкий	25.0	32.8
Средний	25.0	34.5
Повышенный	12.5	13.1
Высокий	0.0	1.1

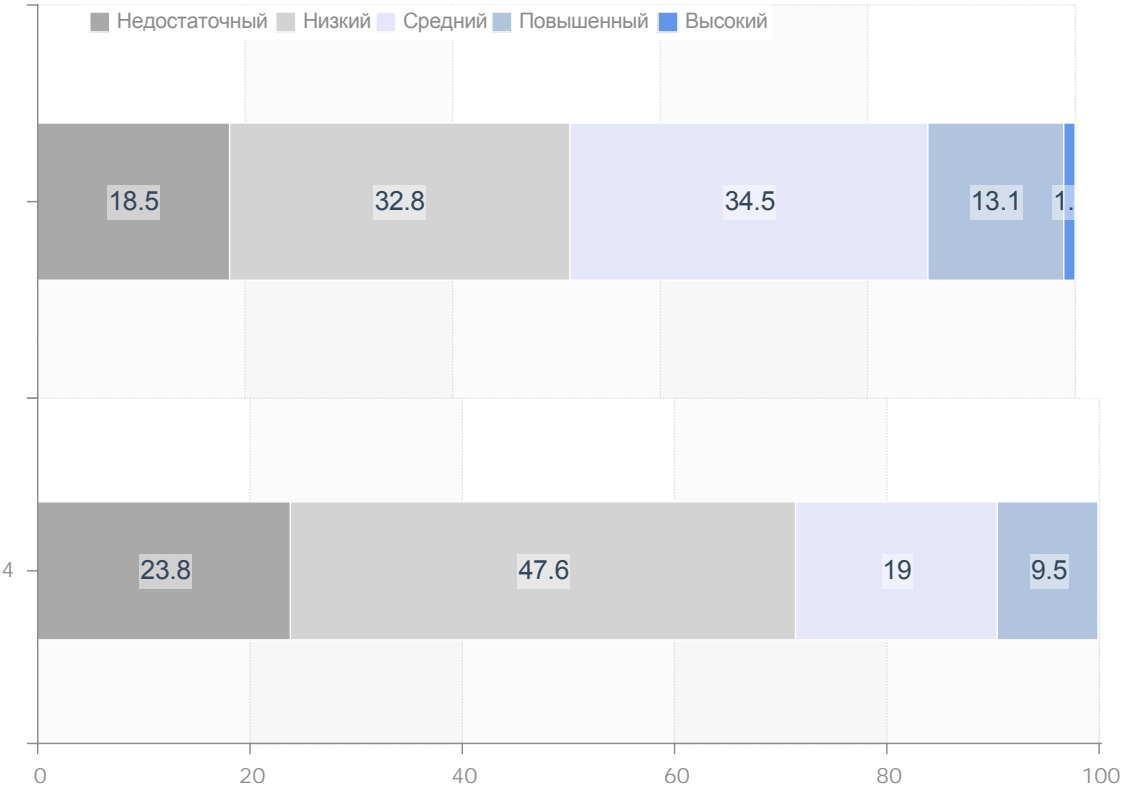




	4В	Свердловская область
Недостаточный	21.1	18.5
Низкий	47.4	32.8
Средний	26.3	34.5
Повышенный	5.3	13.1
Высокий	0.0	1.1



	4Г	Свердловская область
Недостаточный	40.0	18.5
Низкий	13.3	32.8
Средний	40.0	34.5
Повышенный	6.7	13.1
Высокий	0.0	1.1



	4Д	Свердловская область
Недостаточный	23.8	18.5
Низкий	47.6	32.8
Средний	19.0	34.5
Повышенный	9.5	13.1
Высокий	0.0	1.1

